



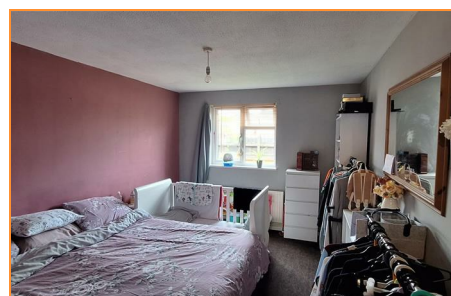
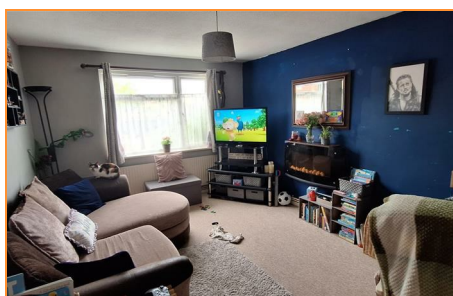
27 Meriton, Orton Goldhay, Peterborough, PE2 5RE

£87,000

Nestled in the charming area of Meriton, Orton Goldhay, Peterborough, this delightful flat presents an excellent opportunity for those seeking a comfortable and convenient living space. The property features a well-proportioned reception room, perfect for relaxation or entertaining guests. The single bedroom offers a peaceful retreat, ideal for rest after a long day.

The flat also includes a modern bathroom, designed with functionality in mind, ensuring your daily routines are both efficient and enjoyable. With no chain involved, this property is ready for you to move in without delay, making it an attractive option for first-time buyers or those looking to downsize.

Whether you are looking to invest or find your new home, this flat in Meriton is a wonderful choice that combines comfort, convenience, and a welcoming atmosphere. Do not miss the chance to make this property your own.



This is a ground floor flat situated in a popular part of Peterborough, and which is offered for sale with no chain. Until recently it has been rented out, and it is felt that it would again make an ideal investment property, or a first time buy. The flat is of a good size with entrance hall having a large built in wardrobe / coat storage cupboard. The bedroom is a good sized double. And the lounge a decent size too. There is uPVC double glazing throughout the property.

Early Viewing is recommend

Entrance Hallway

12'10x 3'02 8'00 x 3'02 (3.91m x 0.97m 2.44m x 0.97m)

Upvc Door to front, L,shaped hallway with built in wardrobe, and storage cupboards, doors leading to all rooms, carpet,

Lounge

13'10 x 10'06 (4.22m x 3.20m)

Upvc window to rear, Radiator, carpet

Bedroom

13'02 x 9'10 (4.01m x 3.00m)

Upvc window to rear, Radiator, carpet

Kitchen

12'05 x 5'11 (3.78m x 1.80m)

Upvc window to front , Range of base and eye level units with worktops, space for a cooker, and with space for a fridge freezer, plumbing for washing machine, With single drainer stainless steel sink unit,

Bathroom

6'08 x 4'10 (2.03m x 1.47m)

Upvc window to front , Bath with shower over, wc, hand basin, Radiator, vinyl flooring

