

PropertyLine



23 Eastfield Road (1st Floor)

Peterborough, PE1 4AP

£675 PCM



1 BEDROOM FLAT - 1 RECEPTION - LOCATED IN "CENTRAL PETERBOROUGH" - 1 BATHROOM - UNFURNISHED PROPERTY

ACCESS

The private entrance to the first floor flat is accessed via the front door at ground floor level.

The porch housing the gas meter leads to the entrance hall with period features and staircase up to the first floor flat.

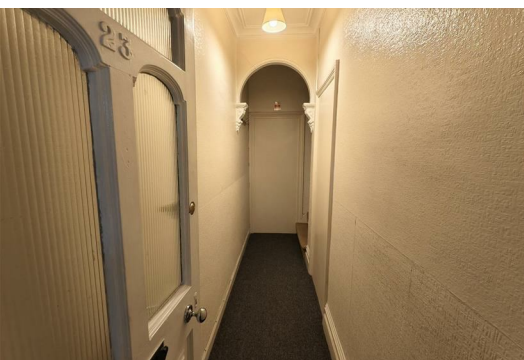
SITTING ROOM 4.15m x 3.81m (13'7½" x 12'6")

Westerly aspect benefitting from afternoon and evening sunlight. Two double glazed windows are fitted with roller and vertical louvre blinds.

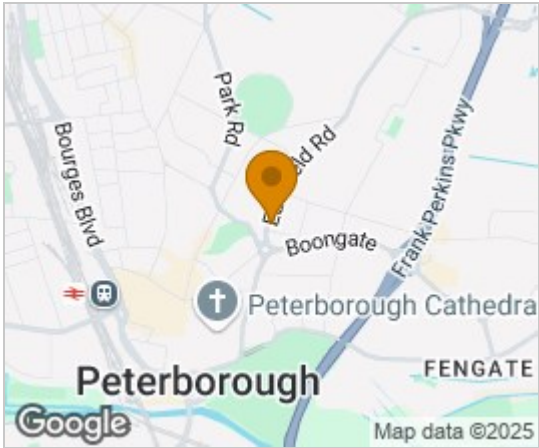
The flooring comprises a fitted carpet. Other features include a TV aerial point, 3 twin electrical sockets and Victorian style half glazed panelled door.

BEDROOM 3.94m x 3.17m (12'10" x 10'5")

Quiet location facing the rear of the property offering space for a double bed, side chests, drawers and clothes hanging.



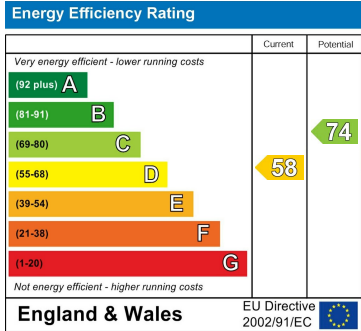
Area Map



Floor Plans



Energy Efficiency Graph



These particulars, whilst believed to be accurate are set out as a general outline only for guidance and do not constitute any part of an offer or contract. Intending purchasers should not rely on them as statements of representation of fact, but must satisfy themselves by inspection or otherwise as to their accuracy. No person in this firms employment has the authority to make or give any representation or warranty in respect of the property.