

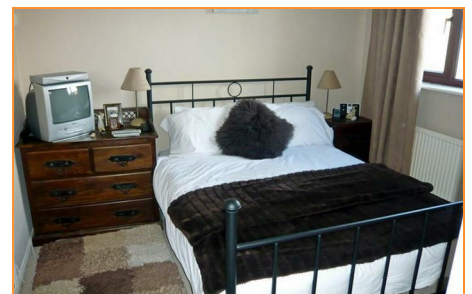
## 65 Ringwood, South Bretton, Peterborough, PE3 9SR

**Offers Over £225,000**

THREE BEDROOM TERRACE PROPERTY - LOCATED IN THE POPULAR AREA OF SOUTH BRETTON - PROPERTY COMPRISES OF HALLWAY - LOUNGE/DINING ROOM - FITTED KITCHEN - TWO DOUBLE BEDROOMS - ONE SINGLE BEDROOM - FAMILY BATHROOM WITH SHOWER - REAR GARDEN - GARAGE

Benefits include well presented decor, full upvc double glazing, gas central heating, enclosed low maintenance rear garden and garage.

COUNCIL TAX BAND - B





## Hallway

4'07 x 4'08 (1.40m x 1.42m)

Stairs to first floor landing, radiator and fitted carpet.

## Lounge

15'01 x 12'06 (4.60m x 3.81m)

UPVC double glazed bay window to front aspect, radiator, under stairs storage cupboard and laminate flooring. Open plan to Dining Area

## Dining area

9'02 x 7'03 (2.79m x 2.21m )

Window to rear , radiator and laminate flooring.

## Kitchen

7'11 x 6'08 (2.41m x 2.03m)

Range of matching base and eye level units with worktop space over and tiled splashbacks, sink and drainer with mixer tap over, electric oven and grill, integrated fridge/freezer, tiled flooring. Door leading

## Landing

9'05 x 5'10 (2.87m x 1.78m)

Loft access, airing cupboard and fitted carpet. doors to all rooms

## Bedroom 1

9'08 x 8'11 (2.95m x 2.72m)

Double glazed windows to rear aspect, built in cupboard, radiator and fitted carpet.

## Bedroom 2

9'03 x 7'05 (2.82m x 2.26m)

UPVC double glazed window to front aspect, radiator and fitted carpet.

## Bedroom 3

7'10 x 6'04 (2.39m x 1.93m)

UPVC double glazed window to front aspect, radiator and fitted carpet.

## Bathroom

6'05 x 5'07 (1.96m x 1.70m)

UPVC obscure double glazed window to rear aspect, three piece suite comprising bath with thermostatic shower, mixer tap and shower screen, sink and pedestal and wc.

## Outside

Enclosed rear garden leading single garage

