

PropertyLine



35b Towler Street

Central, Peterborough, PE1 2TX

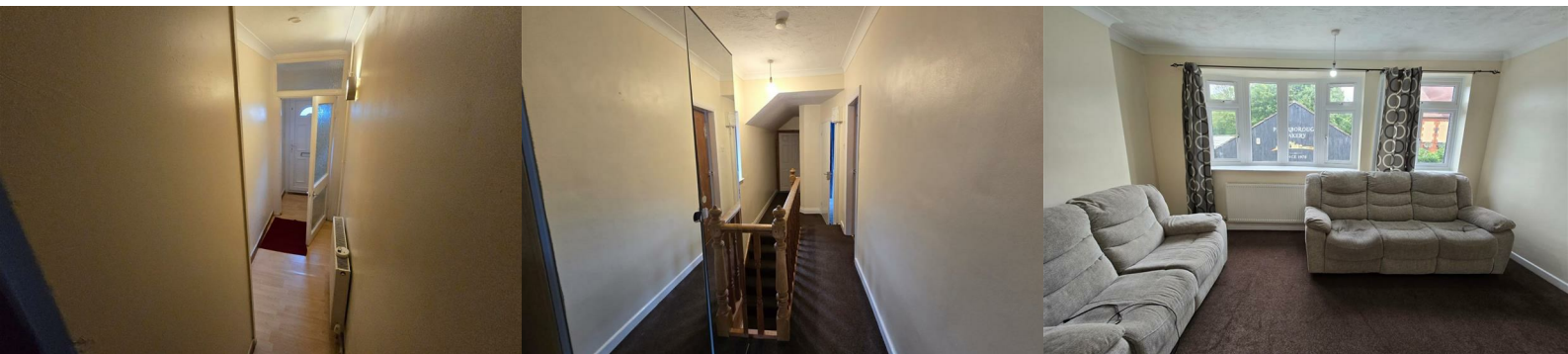
£695 PCM



FIRST FLOOR FLAT - LOCATED WITHIN WALKING DISTANCE TO THE CITY CENTRE - WALKING DISTANCE TO THE TRAIN,BUS STATIONS & QUEENSGATE SHOPPING CENTRE- PROPERTY BENEFITS FROM SPACIOUS RECEPTION ROOM - DOUBLE BEDROOM - KITCHEN/DINER - BATHROOM WITH OVERHEAD SHOWER - DOUBLE GLAZING - CENTRAL HEATING.

A detached property which hosts a first floor one bedroom apartment located in the City Centre close to Kings School and Peterborough Regional College. It is also within walking distance to the local amenities and the bus and train stations.

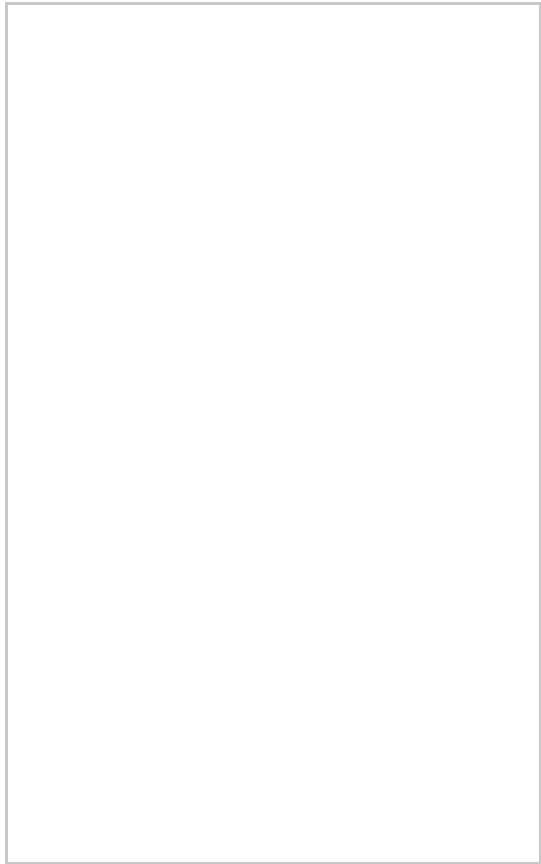
COUNCIL TAX BAND - A
SIX MONTH TENANCY



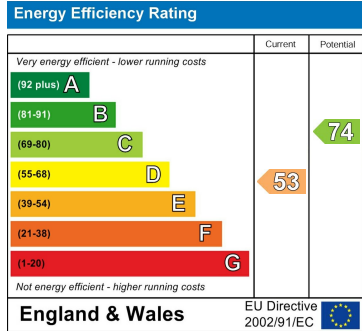
Area Map



Floor Plans



Energy Efficiency Graph



These particulars, whilst believed to be accurate are set out as a general outline only for guidance and do not constitute any part of an offer or contract. Intending purchasers should not rely on them as statements of representation of fact, but must satisfy themselves by inspection or otherwise as to their accuracy. No person in this firms employment has the authority to make or give any representation or warranty in respect of the property.