

PropertyLine



## 194 Park Road, Flat 3

Peterborough, PE1 2UF

£775 PCM

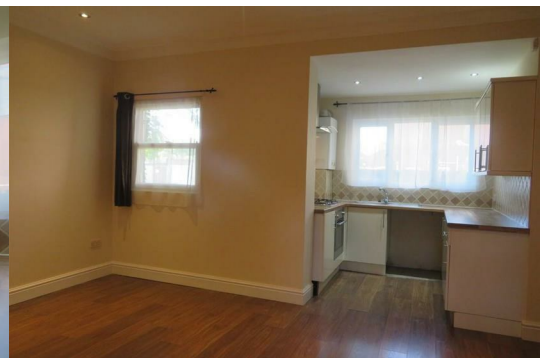


One bedroom ground floor Victorian flat conversion situated near central park and within a 10 minute walk from the city centre.

The accommodation has just been fully refurbished to an exceptional standard and offers; private entrance hall, living room, modern fitted kitchen, double bedroom and shower room.

Other features include laminate flooring, gas radiator heating ,upvc double glazing and newly painted throughout.

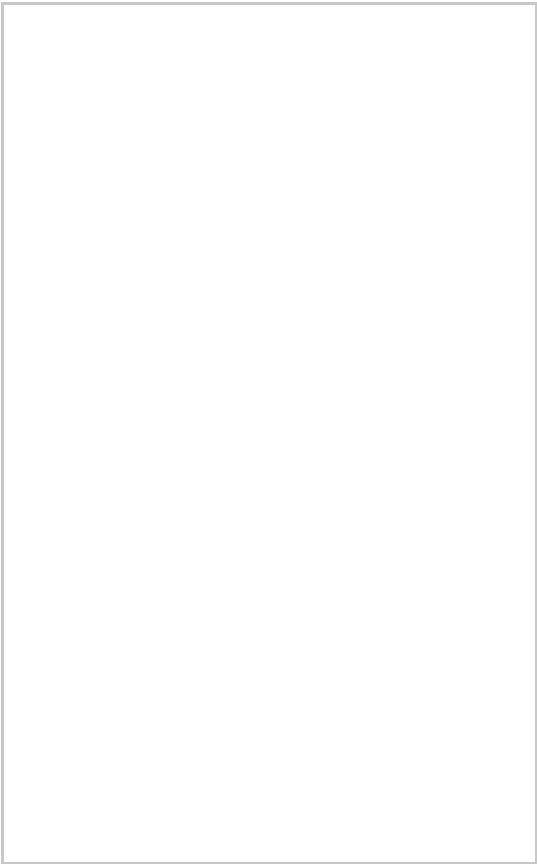
INITIAL SIX MONTHS TENANCY



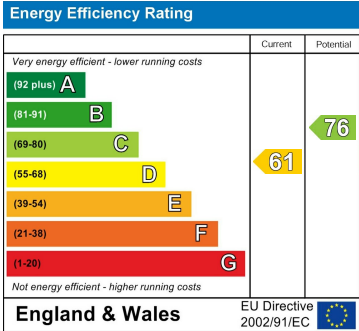
### Area Map



### Floor Plans



### Energy Efficiency Graph



These particulars, whilst believed to be accurate are set out as a general outline only for guidance and do not constitute any part of an offer or contract. Intending purchasers should not rely on them as statements of representation of fact, but must satisfy themselves by inspection or otherwise as to their accuracy. No person in this firms employment has the authority to make or give any representation or warranty in respect of the property.