

PropertyLine



## 7 Eastholm Court

Eastholme Close, Peterborough, PE1 5TY

£725 PCM



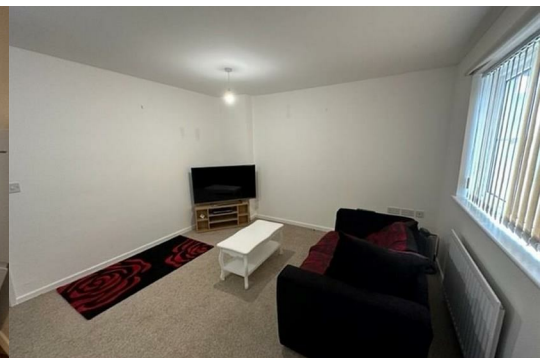
One bedroom ground floor flat located close to the City Centre.

Accommodation briefly comprises of entrance hall, kitchen, bathroom with shower, large lounge and a double bedroom.

Benefits include neutral decor and carpets, gas central heating, double glazing, allocated parking and an enclosed rear garden.

COUNCIL TAX BAND - A

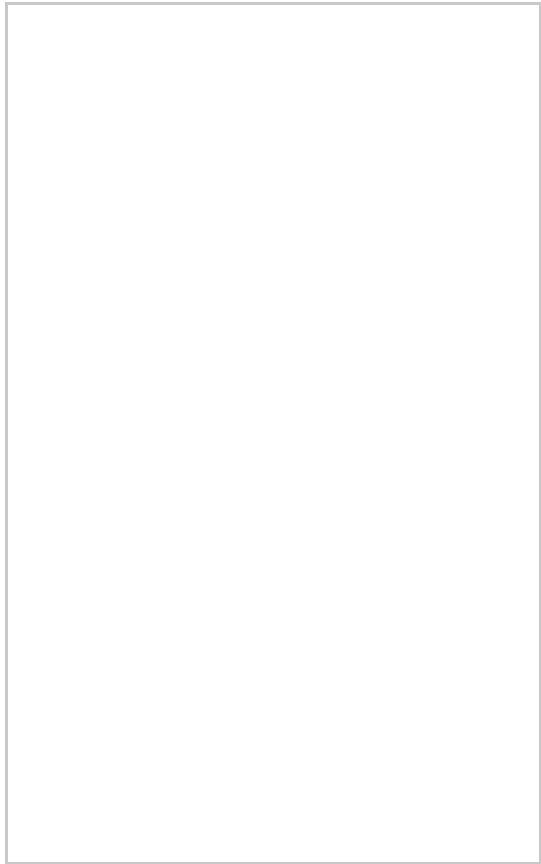
SIX MONTH INITIAL TENANCY



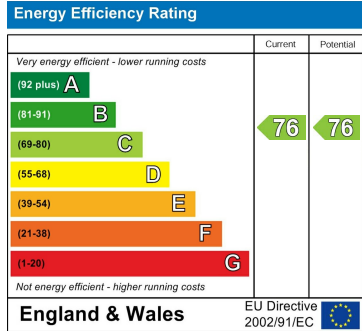
### Area Map



### Floor Plans



### Energy Efficiency Graph



These particulars, whilst believed to be accurate are set out as a general outline only for guidance and do not constitute any part of an offer or contract. Intending purchasers should not rely on them as statements of representation of fact, but must satisfy themselves by inspection or otherwise as to their accuracy. No person in this firm's employment has the authority to make or give any representation or warranty in respect of the property.