

PropertyLine



# 231 Dogsthorpe Road

Central, Peterborough, PE1 3AT

£900 PCM



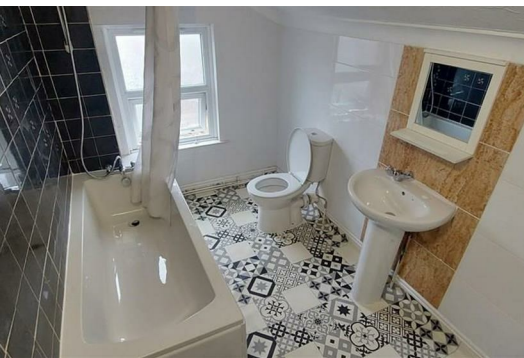
Updated 2 bedroom mid terraced house.

Accommodation briefly comprises of open plan lounge/dining room, kitchen, downstairs wc

To the first floor there are two separate double bedrooms and a newly re-fitted bathroom with shower over bath.

Benefits include neutral decor, new carpets, gas central heating, double glazing and rear garden.

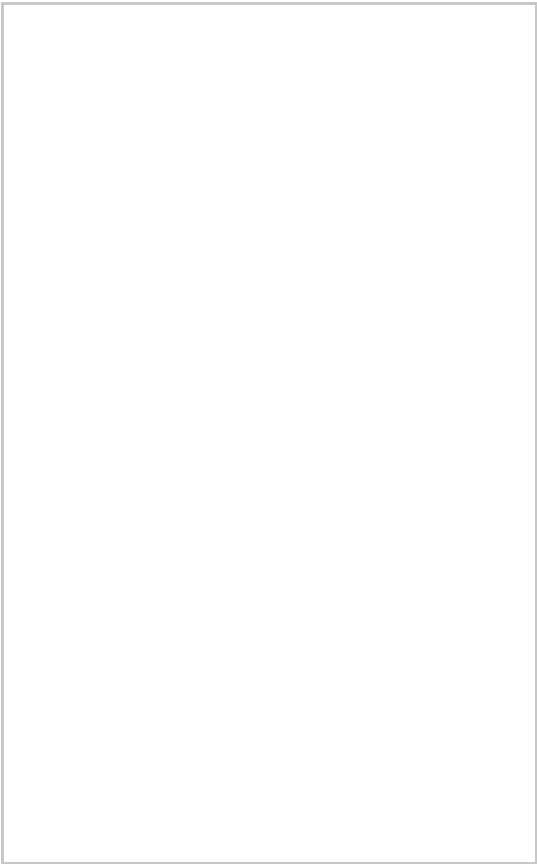
INITIAL SIX MONTHS TENANCY



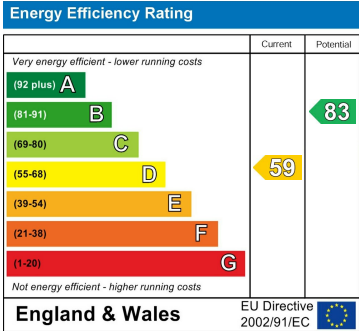
## Area Map



## Floor Plans



## Energy Efficiency Graph



These particulars, whilst believed to be accurate are set out as a general outline only for guidance and do not constitute any part of an offer or contract. Intending purchasers should not rely on them as statements of representation of fact, but must satisfy themselves by inspection or otherwise as to their accuracy. No person in this firm's employment has the authority to make or give any representation or warranty in respect of the property.