

PropertyLine



## 77 Park Road

Central, Peterborough, PE1 2TN

£675 PCM



ONE BEDROOM SPACIOUS GROUND FLOOR FLAT SITUATED WITHIN THE CITY CENTRE.

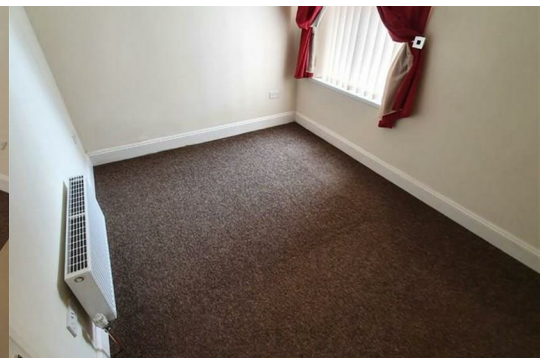
One bedroom spacious ground floor apartment situated within the City Centre, ideal for commuters using Peterborough Train Station.

Accommodation briefly comprises of entrance hall, living room, kitchen, bedroom and shower en-suite.

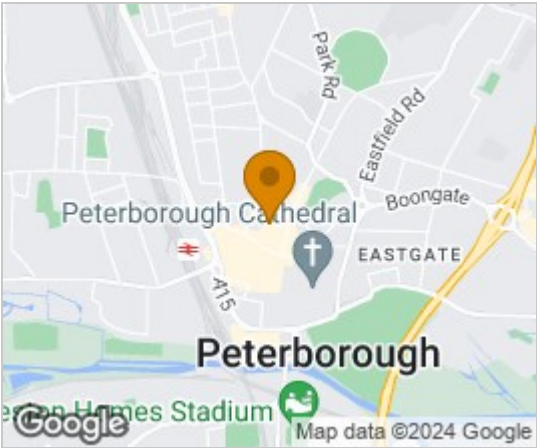
Benefits include neutral decor and floor coverings, double glazing and communal garden. parking space available first come first served. Parking permits will need to be brought.

INITIAL 6 MONTHS TENANCY

COUNCIL TAX BAND A



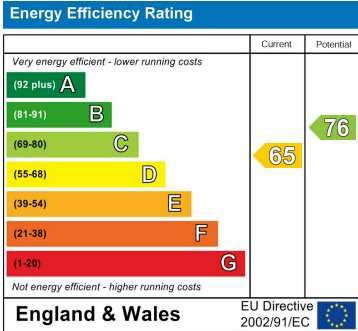
### Area Map



### Floor Plans



### Energy Efficiency Graph



These particulars, whilst believed to be accurate are set out as a general outline only for guidance and do not constitute any part of an offer or contract. Intending purchasers should not rely on them as statements of representation of fact, but must satisfy themselves by inspection or otherwise as to their accuracy. No person in this firms employment has the authority to make or give any representation or warranty in respect of the property.