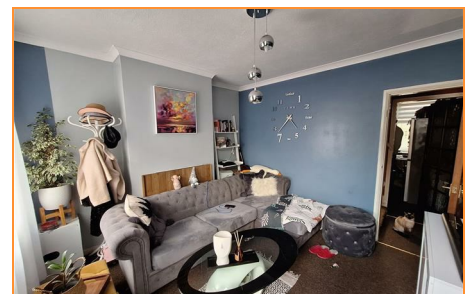
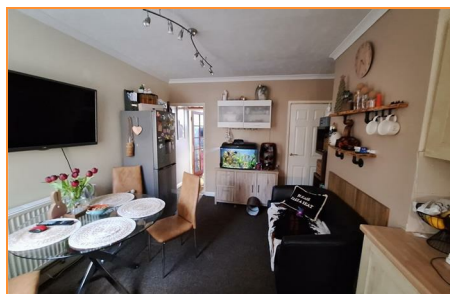
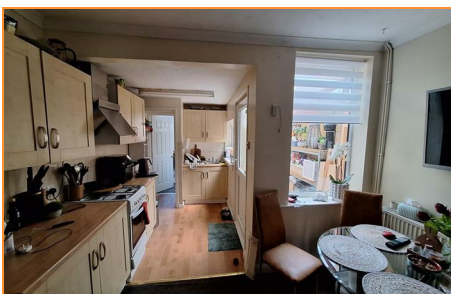


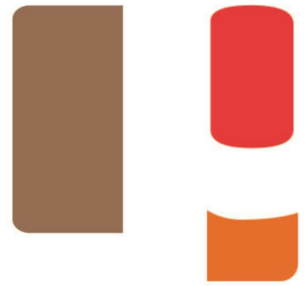
51 Craig Street, City Centre, Peterborough, PE1 2EJ

Offers Over £170,000

City Centre terrace property, conveniently located within walking distance of the city centre shops and amenities and Peterborough Railway station, with 45 minute train links through to London Kings Cross.

Spacious accommodation throughout, two reception rooms, galley style kitchen, and a downstairs bathroom. Upstairs there are two double bedrooms plus a single bedroom. The property benefits from gas central heating and Upvc double glazing. Outside to the rear of the property is a courtyard garden with shared access leading to the front.





Living Room

11'01 x 11'01 (3.38m x 3.38m)

Upvc double glazed window and door to the front, radiator, carpet, arch to dining room.

Dining Room

11'00 x 9'05 (3.35m x 2.87m)

Upvc window to rear, carpet, radiator, understairs cupboard, open plan into kitchen.

Kitchen

8'01 x 4'05 (2.46m x 1.35m)

Upvc double glazed window and door to the side, fitted with a matching range of base and eye level units with worktop space over, stainless steel sink unit with single drainer and mixer tap, gas cooker with hob, vinyl flooring, door to bathroom.

Bathroom

5'07 x 5'11 (1.70m x 1.80m)

Upvc double glazed window to the side, fitted with a three piece suite comprising pedestal wash hand basin and close coupled W/C, tiled splashbacks and radiator.

Landing

Doors to:

Master Bedroom

11'02 x 11'00 (3.40m x 3.35m)

Upvc double glazed window to the front, built-in wardrobe over the stairs, radiator, carpet.

Bedroom Two

11'01 x 10'11 (3.38m x 3.33m)

Upvc double glazed window to the rear, radiator and fitted carpet door leading to the 3rd bedroom.

Bedroom Three

8'04 x 6'06 (2.54m x 1.98m)

Upvc window to rear, radiator, carpet, boiler.

Outside

Outside to the rear is a courtyard garden.

