



Greenview,  
The Street, Benenden, Kent TN17 4DD

**Greenview,  
1 – 2 Kingsford Cottages, The Street, Benenden, Kent TN17 4DD  
Guide Price £695,000**

'Greenview' is a quintessentially English attached Grade II Listed 5 bedroom cottage with pretty garden and extensive outbuildings, occupying an idyllic position with stunning views across the picturesque village green towards the ancient church in the heart of the Wealden village of Benenden.

**FOR IMPROVEMENT AND REFURBISHMENT** This unspoilt five-bedroom cottage exudes warmth, character and history, and can only be described as a "rare gem", the like of which hardly ever comes on to the open market. Owned by the same family since 1914, it was for the most part their business, the village general store, and family home. Although the interior remains largely unchanged, it is clear that with sympathetic modernisation, this spacious three storey cottage could be a very special home indeed.

With its charming exterior, pretty cottage garden and wonderful views over the village green and church, it has the feel of a slower paced by-gone era. But never fear, the village amenities are all within a short walk, and the historic towns of Cranbrook and Tenterden are only 3.5 and 5 miles away in different directions for those who need to still feel connected to the 21st Century. This property also benefits from a large workshop, outside WC, store room and two storey barn, the upper floor of which is truly remarkable and offers huge potential, subject of course to any necessary permissions. The cottage also comes within the much sought after Cranbrook School Catchment Area. Viewing is recommended to appreciate all that this fascinating period cottage has to offer.

- Charming, historic, Grade II Listed village property
- Now in need of refurbishment & improvement
- Spacious, flexible 3 storey 5-bedroom family home
- Just under 3,000 sq ft of accomm (including outbuildings)
- Off-street parking to front / Enclosed garden to rear
- Stunning views of village green & ancient church
- Central village location / Walking distance of amenities
- Cranbrook & Tenterden 3.5 and 5 miles distant
- Comes within Cranbrook School Catchment Area NO ONWARD CHAIN

**SITUATION:** " This lovely property is situated in the centre of the highly regarded Wealden village of Benenden, which offers a good range of everyday local facilities including a primary school, butchers shop, cafe, general store, village hall and popular public house with restaurant, together with a picturesque village green and ancient church. More comprehensive shopping, leisure and health facilities can be found in the nearby towns of Cranbrook (3.5 miles) and Tenterden (5 miles). There is a wide choice of schools in both the state and private sectors nearby, including the renowned Benenden Girls School. This property also benefits from being within the Cranbrook School catchment area. Staplehurst station is approximately 8 miles distant with services to Charing Cross and Canon Street. The beautiful surrounding countryside, which includes the popular Hemsted Forest, provides many opportunities for walking and cycling.



The front door opens into a small **ENTRANCE PORCH** which gives access to the **SNUG** 16'1 x 14'3. With its beautiful inglenook fireplace, this room is perfect for cosy nights by the fire. A window to the front gives lovely views over the village green towards the church. Large built-in storage cupboard.

**LOBBY** A lobby acts as a central point in the cottage, linking the majority of rooms on the ground floor. Stairs to first floor with large L-shaped cupboard below.

**KITCHEN / BREAKFAST ROOM** 15' 1" x 8'1. This characterful space, which is open to the dining room beyond, has a very functional fitted kitchen and plenty of space for a table and chairs. Built-in larder.

**DINING ROOM** 10'0 x 9'1. This lovely room is handily positioned next to the kitchen and would make the ideal place for family dining. Door to back garden.

**SITTING ROOM** 24'10 x 15'10. With its beautiful inglenook fireplace, only exposed in recent years, this spacious room, once the village store and barbers, would make a fabulous sitting room. The old shop window at the front now gives uninterrupted views over the village green and for those with vintage tastes, there is still some of the shop shelving and counter, which could make wonderful features in the room. A second open tread staircase leads to the bedroom above.

**UTILITY / BOOT ROOM** Originally the shop store, this useful space could very easily be turned into a utility cum boot room and / or cloakroom. Doors to sitting room and back garden.

**FIRST FLOOR LANDING** Stairs from the lobby on the ground floor lead to a landing which gives access to the rooms on this floor and stairs to the second floor.

**BEDROOM 1** 16' 6" x 13'11. A large bedroom with feature brick fireplace, built-in storage cupboard housing hot water cylinder and window to the front giving glorious views over village green.

**BEDROOM 2** 15' 11" x 9'7. Originally the main store room for the shop, this bedroom can be accessed both from the landing and from the staircase that leads up from the sitting room. Feature fireplace and window to front.

**BEDROOM 3** 11' 4" x 9'11. A pretty bedroom with lovely views to the front.

**BATHROOM** A good size bathroom comprising a panelled bath, separate shower and wash basin. NB: Although the WC is separate at present, there would be room for a WC in this bathroom if desired.

**Separate WC** positioned off inner landing.

**SECOND FLOOR ATTIC / LOFT SPACE** A staircase from the first floor landing leads to two very useful attic spaces (see floor plan for dimensions), both of which have been used in the past as bedrooms, the larger more recently having been used as an artist's studio.

These rooms both have the most amazing views over the village green and church and the larger of the rooms has an historically significant King Post which makes a beautiful character feature. NB: Some restricted head height to these rooms.

**OUTSIDE** Immediately to the front of the house is off-street parking large enough for two cars. To the rear, an enclosed garden, which provides an oasis of privacy and relaxation, is completely in keeping with the character of the property. Within the garden, there is a large workshop, outside WC, store room and the majority share of a two storey timber barn. NB: this property has a right of pedestrian access to the rear across the back of the three neighbouring properties.

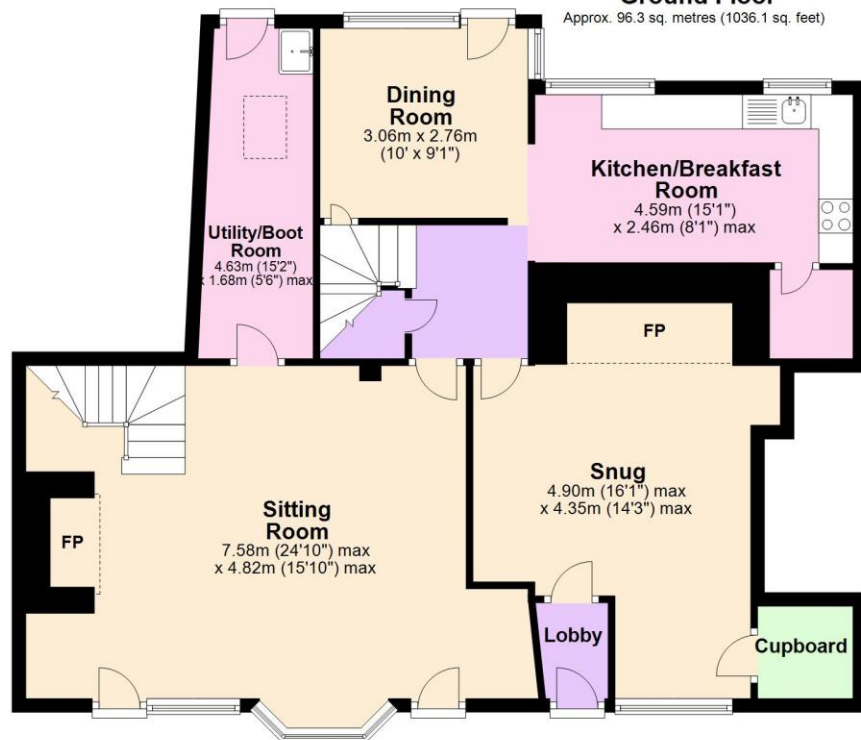
**SERVICES** Mains: water, electricity, gas and drainage. EPC: Exempt. Local Authority: Tunbridge Wells Borough Council. Council Tax: E.

**AGENTS NOTE** We understand there is a partial flying freehold above number 3 Kingsford Cottages and the barn has a flying freehold over the section of the ground floor owned by number 4



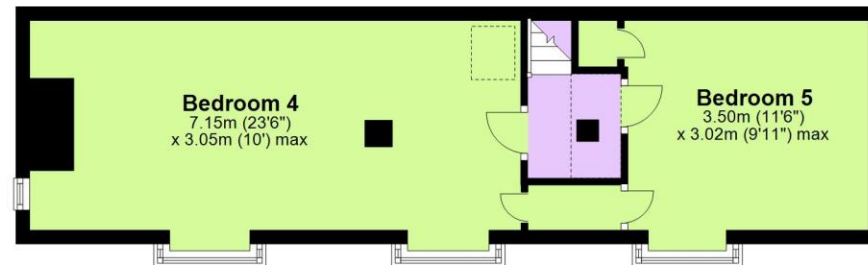
## Ground Floor

Approx. 96.3 sq. metres (1036.1 sq. feet)



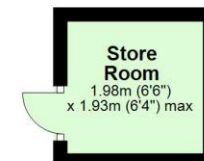
## Second Floor

Approx. 38.2 sq. metres (411.6 sq. feet)



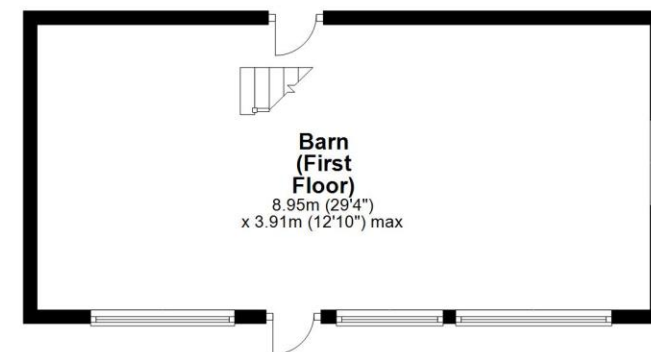
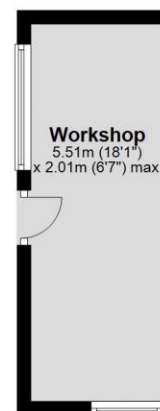
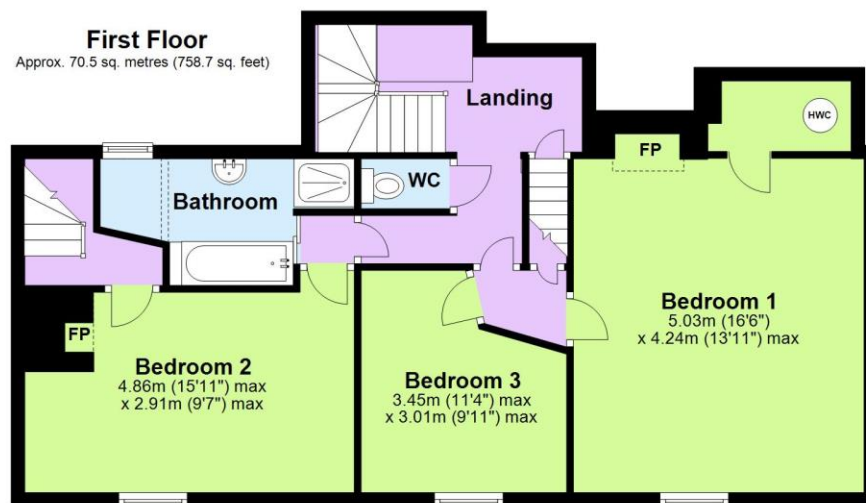
## Outbuildings

Approx. 72.3 sq. metres (778.5 sq. feet)



## First Floor

Approx. 70.5 sq. metres (758.7 sq. feet)



Total area: approx. 277.3 sq. metres (2984.9 sq. feet)

Plans are for layout purposes only and not drawn to scale, with any doors, windows and other internal features merely intended as a guide.  
Plan produced using PlanUp.

All measurements are approximate. These particulars are produced in good faith, but are intended to be a general guide only and do not constitute any part of an offer or contract. No person in the employment of WarnerGray, their clients and any joint agents have any authority to make any representation of warranty whatsoever in relation to the property. Photographs are reproduced for general information only and do not imply that any item is included for sale with the property. WarnerGray advises purchasers to satisfy themselves by inspection of the property. It should not be assumed that the property has all the necessary planning, building regulations or other consents regarding alterations.



