



Tredore, 18 Parc Monga, Constantine, Falmouth, TR11 5AR

Guide Price £650,000

To be sold for only the second time since construction and in our clients ownership for almost 40 years, a detached bungalow constructed by highly regarded local builders, Messrs Trethowans, occupying a superb position on the edge of this extremely well served North Helford Area village, set within meticulously maintained surrounding gardens, at the end of its own long private drive, providing extensive, faultlessly presented, double glazed and centrally heated accommodation, with excellent parking, sufficient for numerous vehicles, together with a detached garage and large separate workshop.

Key Features

- Meticulously maintained and presented detached bungalow
- Well enclosed surrounding gardens
- Oil fired central heating and full double glazing
- Walking distance of excellent amenities
- Superb edge of village location
- Long driveway, ample parking, detached garage and workshop
- Spacious, extended living accommodation
- EPC rating D



THE PROPERTY

Built, we understand, approximately forty years ago by highly regarded local builders, Messrs Trethowans, 'Tredore' has been in our clients ownership for almost all of this period, during which it has been extended and superbly maintained to provide what, now, is an exceptional, detached, edge of village bungalow, which enjoys exceptional outside facilities as well as a tranquil, sheltered position with views towards Constantine church.

Double glazed and centrally heated, the accommodation has been extended at the rear to provide a large, family sized, triple aspect kitchen/breakfast room, in addition to which there is a double aspect lounge/diner with glass-fronted log-burner and patio doors onto an expansive decked sun terrace, as well as into an extremely sunny conservatory on the property's south western side.

A long private driveway approach provides private access off what, already, is a quiet residential cul-de-sac, with the driveway forming a large forecourt suitable for numerous vehicles, in addition to which there is a covered car port, detached garage and additional hardstanding, to the front boundary, ideal for those with a caravan, motorhome or boat etc. Well enclosed lawned gardens extend across the front of the property where there is also a decked terrace, ideal for entertaining etc, which opens, in turn, onto a large side patio. There are neat, well tended gardens to the rear where there is secondary pedestrian access from Parc Monga, together with greenhouse, oil storage tank, utility room and gardener's WC to the rear of the garage, as well as a superb workshop - 29'11" x 11'8" (9.14m x 3.58m), with light and power connected, ideal for the handyman, hobbyists, and those requiring a studio etc.

In all, a perfect home, ideal for retirees and families alike.

THE LOCATION

Parc Monga is a quiet residential cul-de-sac on the south western outskirts of Constantine, one of the best served villages in the sought-after North Helford River Area. Within walking distance of the property is the doctors surgery, as well as excellent day-to-day amenities including two convenience stores, church, social club, public house, primary school and active community hall - The Tolmen Centre.

Nearby walks lead through picturesque countryside to Polwheveral Creek and the Helford River; boating and laying-up facilities are available nearby at Gweek, and the port of Falmouth is just seven miles distant.

THE ACCOMMODATION COMPRISES

(All dimensions being approximate)

ENTRANCE HALL

Replacement uPVC double glazed entrance door with matching side panel from the front garden and parking area. Archway, radiator, access to extensive loft storage area, internal hallway with linen cupboard with radiator, Honeywell timer switching and slatted shelving.

LOUNGE

22'4" x 14'6" (6.81m x 4.42m)

Maximum measurements provided. A light, well proportioned,

double aspect room with double casement doors opening onto the front terrace over which views are enjoyed to the surrounding gardens, woodland and outskirts of the village beyond. Fireplace housing glass-fronted log-burner with slate hearth. TV aerial socket, radiator. Window to the side elevation and sliding aluminium double glazed door opening into the:-

CONSERVATORY

12'2" x 8'2" (3.71m x 2.51m)

Of uPVC and double glazed construction, providing another lovely sitting area with views over the gardens and door opening directly onto the side terrace. Electric convector heater, ceramic tiled flooring.

KITCHEN/BREAKFAST ROOM

17'1" x 13'3" (5.23m x 4.06m)

A superb extension; triple aspect with double glazed patio door opening onto the side terrace, broad window to the rear elevation and double glazed door with window onto the rear gardens with pathway to the garaging and steps to the workshop. Containing an extensive range of cream painted Shaker-style units with granite-effect worksurfaces between and ceramic tiled splashbacks. Central island unit, recess for broad range cooker with illuminated extractor canopy over. Sink unit with mixer tap and cutlery drainer, integrated Bosch dishwasher. Glass-fronted display cabinets, corner carousel units, integrated Bosch fridge/freezer. Inset downlighting, radiator.

BEDROOM ONE

12'9" x 9'10" (3.89m x 3.02m)

Maximum measurements provided. Broad window to the front elevation overlooking the gardens to woodland beyond. Radiator, broad double wardrobe with storage lockers over.

BEDROOM TWO

12'4" x 11'10" (3.76m x 3.63m)

Maximum measurements provided. Again, enjoying an attractive outlook over the gardens to woodland and the outskirts of the village beyond. Radiator, double built-in wardrobe with storage lockers over.

BEDROOM THREE

12'0" x 8'9" (3.66m x 2.69m)

A double aspect room with windows to the side and rear elevations, radiator, two built-in cupboards with louvre doors.

FAMILY BATH/SHOWER ROOM

Most attractively appointed with a white four-piece suite comprising a shower cubicle with curve glazed screen and Mira instant shower, low flush WC, panelled bath with mixer tap and pedestal wash hand basin with mixer tap and cupboards below. Ceramic tiled walls, two windows to the rear elevation, tall towel rail/radiator, shaver socket.

THE EXTERIOR

'Tredore' benefits from its own, private, long tarmac driveway with double entrance gates and timber fencing to either side, with gravelled borders.

PARKING AREA

The driveway forms a large parking area sufficient for three/four vehicles immediately to the front of the property, to

the side of which is a covered CAR PORT with courtesy lighting, pedestrian door to the rear gardens and up-and-over door to the garage.

FRONT GARDENS

Laid mainly to lawn with an attractively stocked shrub border, beyond which there is a concreted storage area, ideal for those with a boat or caravan etc.

DECKED SUN TERRACE AND SIDE PATIO

'Tredore' has an extensive south and west facing decked terrace, ideal for entertaining etc, with all day sun and lovely views over the gardens to woodland, the outskirts of the village and church spire. Double casement doors from the lounge and ornamental balustrading which leads to the side terrace which, again, is extremely sunny and well sheltered with raised beds and timber fencing along one boundary. Exterior courtesy lighting and power point, doors from the conservatory and kitchen/diner, cold water tap, pathway continuing to the:-

REAR GARDENS

Raised kitchen garden area, pathway from the car port and garage leading to the kitchen/diner, with courtesy lighting.

GARAGE

17'3" x 8'5" (5.28m x 2.59m)

Metal up-and-over door, light and power connected, half glazed courtesy door, exterior cold water tap.

UTILITY ROOM AND GARDENER'S WC

Situated to the rear of the garage, housing the Grant oil fired boiler providing domestic hot water and central heating, space and plumbing for washing machine. Window to the rear, ceramic tiled flooring, sliding door opening into the gardener's WC with low flush WC and corner wall mounted wash hand basin.

THE WORKSHOP

29'11" x 11'8" (9.14m x 3.58m)

A superb feature for the artist, handyman or collector etc. Light and power connected, windows overlooking the rear gardens.

The pathway leading to the workshop continues to the rear boundary where there is a high level access gate onto Parc Monga, beside which there is a further exterior tap and greenhouse, beyond which the oil storage tank is discreetly located.

GENERAL INFORMATION

SERVICES

Mains electricity, water and drainage (check) are connected to the property. Oil fired central heating.

TENURE

Freehold.

AGENT'S NOTE

Prospective purchasers should note the owners of 'Tredore' are related to a member of Laskowski & Company.

VIEWING

By telephone appointment with the vendors' Sole Agent - Laskowski & Company, 28 High Street, Falmouth, TR11 2AD. Telephone: 01326 318813.

DIRECTIONAL NOTE

Proceed into the village of Constantine and up Fore Street, passing both convenience stores on the left-hand side. Shortly after the second store, take the left-hand turning immediately in front of the thatched cottage signposted to Gweek. After a short distance, take the first turning left by the old vicarage and proceed passed the church on the left-hand side. At the foot of the churchyard, the Bowling Green begins, continue in the direction of the doctors surgery and take the first turning right into Parc Monga. At the foot of the hill the entrance to 'Tredore' will be immediately facing you.



Floor Plan

Parc Monga, Constantine, Falmouth, TR11

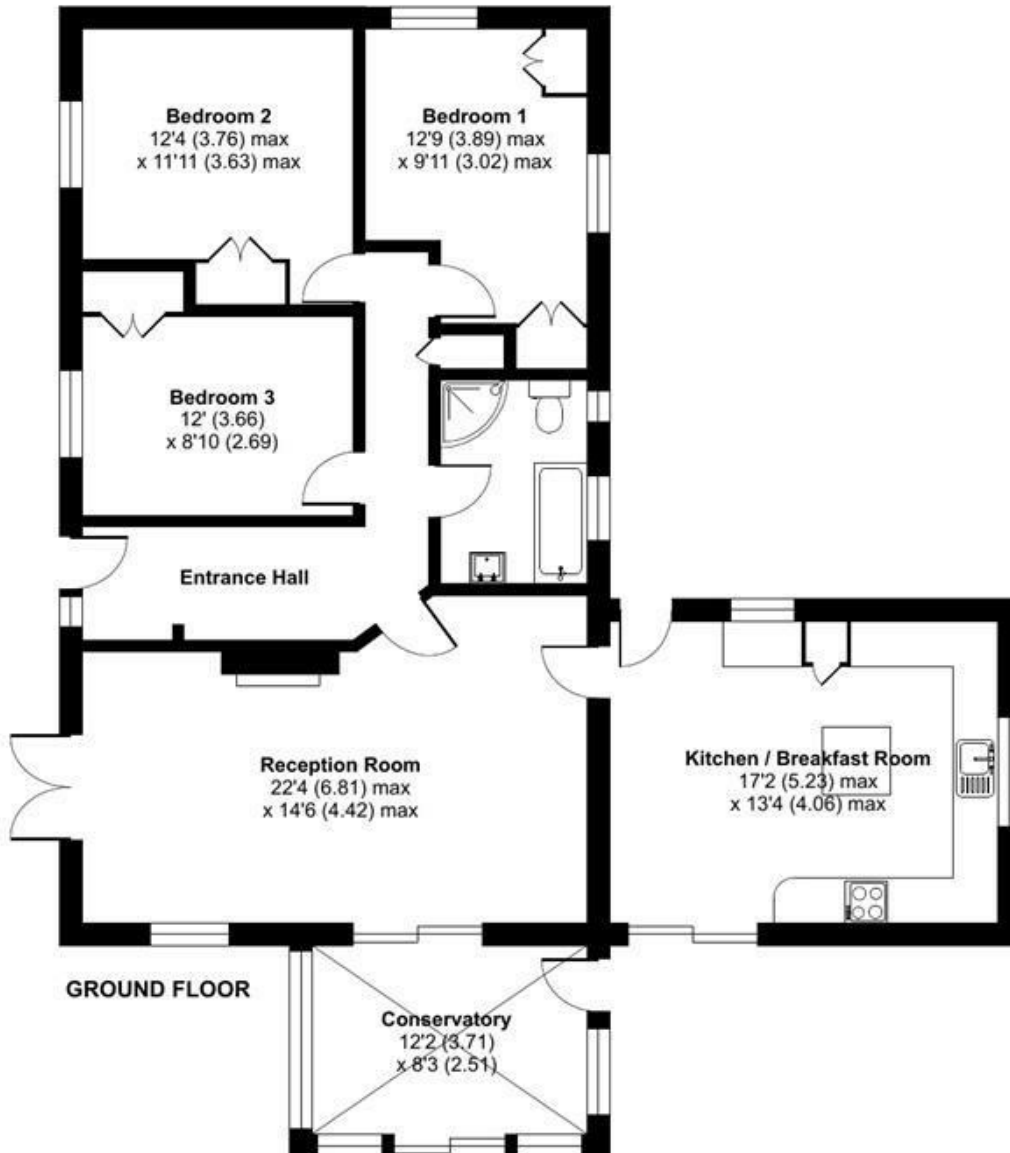
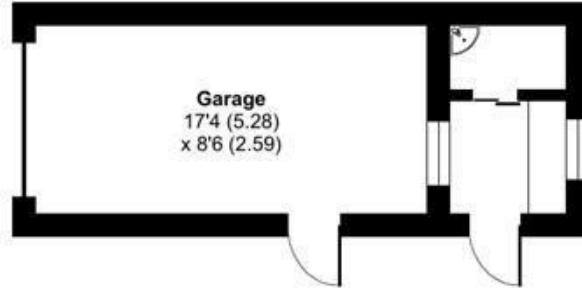
Approximate Area = 1237 sq ft / 114.9 sq m

Garage = 195 sq ft / 18.1 sq m

Workshop = 355 sq ft / 33 sq m

Total = 1787 sq ft / 166 sq m

For identification only - Not to scale



Floor plan produced in accordance with RICS Property Measurement Standards incorporating International Property Measurement Standards (IPMS2 Residential). © nichecom 2024. Produced for Laskowski & Company. REF: 1112068