



149 Upper Richmond Road, Putney, London, SW15 2TX

t: 020 8788 8822

e: putney@allanfuller.co.uk

www.allanfuller.co.uk

Carlton Drive London, SW15

A beautifully presented two bedroom apartment to rent in the heart of Putney just a short distance from the high street and both East Putney and Putney Mainline station. The property is located on the second floor of the building and benefits from an open reception room space with a modern kitchen, dining space and doors leading out to a private balcony. There are two double bedrooms, both with built in storage and two bathrooms.

Further benefits include an off street parking space and lift access. Offered unfurnished, available early November.

Wandsworth Council tax band G
5 week security deposit required
EPC rating B



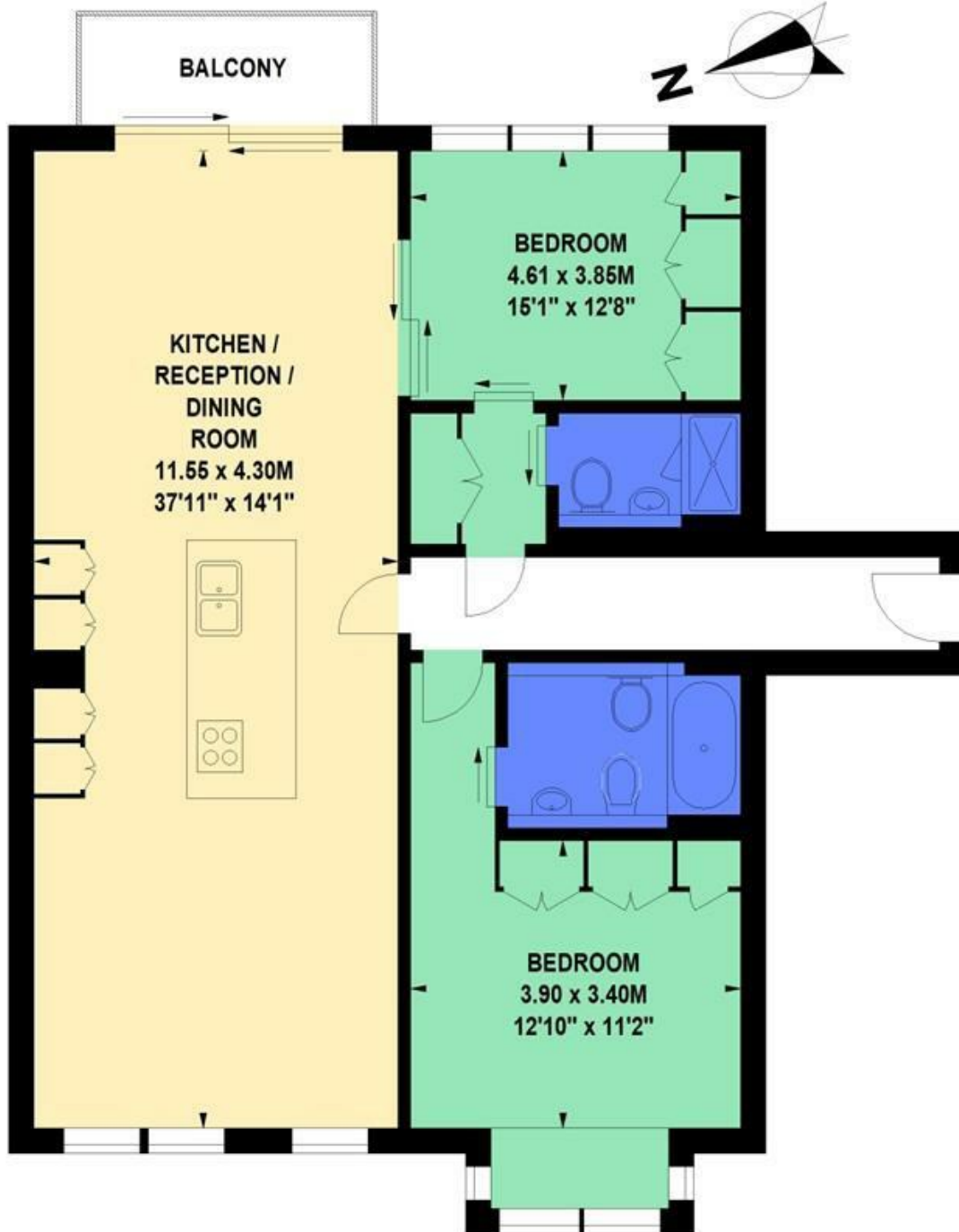
£2,950 PCM





Carlton Drive, SW15

Approximate Gross Internal Area 101 sq.m / 1087 sq.ft



Second Floor

Floor Plan produced for Allan Fuller by Mays Floorplans © . Tel 020 3397 4594

Illustration for identification purposes only, not to scale

All measurements are maximum, and include wardrobes and window bays where applicable

With regards to any information supplied by us in relation to lease, ground rent and service charge it is essential that you have this information checked by your solicitor. We have transmitted information supplied to us by the vendor of the property but we have not been able to inspect the lease to check its accuracy. Please note that we have not tested any of the equipment or utilities at this property, nothing in these particulars shall be deemed a statement that the property is in good condition or otherwise nor that any of the services or facilities are in good working order. Measurements are approximate they were taken with a sonic tape, are as accurate as possible and usually measured from the widest point of any room. Description provided herein represents the opinion of the author, is given in good faith but should not be constructed as statements of fact. The particulars and photograph are for guidance only.