

**ALLAN FULLER**  
— EST. 1983 —

149 Upper Richmond Road, Putney, London, SW15 2TX

t: 020 8788 8822

e: putney@allanfuller.co.uk

www.allanfuller.co.uk

## Putney Heath London, SW15

Situated on the Edge of Putney Heath this 1930's built mansion flat echoes an era of elegance and grace with well-proportioned rooms extending to some 1356 square feet. Refurbished by the current owners in a contemporary style and decorated with a neutral palette this home is ready for immediate occupation.

The grounds at Exeter House are a huge benefit, with extensive lawns, beautifully maintained gardens, two tennis courts, barbecue and outdoor entertaining space, along with a children's play area. There is an on-site estate manager and residents have from off street parking.

The property is located opposite Putney Heath with Wimbledon Common and Richmond Park beyond, the property is close to local bus routes with the nearest Underground being East Putney (District) and Mainline rail (Waterloo) on Putney High Street. The A3 is a few minutes away providing quick road access in and out of central London. There are also excellent schools in the area, both state and private.

EPC - C Wandsworth Council Tax Band F



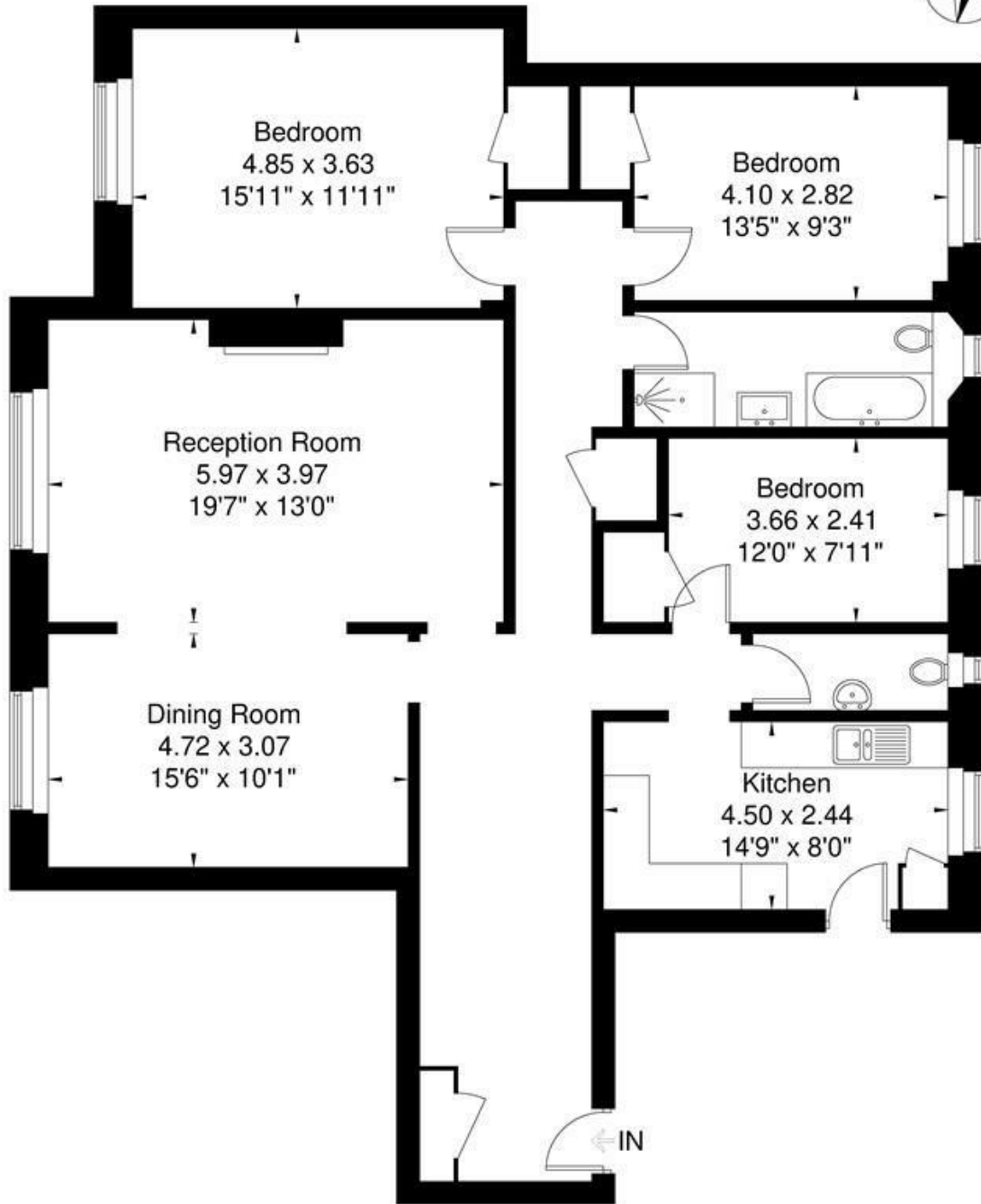
Asking Price £800,000  
Leasehold - Share of Freehold





# Exeter House SW15

Approximate Gross Internal Area = 126 sq m / 1356 sq ft



**First Floor**  
126 sq m / 1356 sq ft

[www.epc.uk.com](http://www.epc.uk.com) [info@epc.uk.com](mailto:info@epc.uk.com)

Not to scale, for guidance only and must not be relied upon as a statement of fact. All measurements and areas are approximate only and have been prepared in accordance with the current edition of RICS code of Measuring Practice.

With regards to any information supplied by us in relation to lease, ground rent and service charge it is essential that you have this information checked by your solicitor. We have transmitted information supplied to us by the vendor of the property but we have not been able to inspect the lease to check its accuracy. Please note that we have not tested any of the equipment or utilities at this property, nothing in these particulars shall be deemed a statement that the property is in good condition or otherwise nor that any of the services or facilities are in good working order. Measurements are approximate they were taken with a sonic tape, are as accurate as possible and usually measured from the widest point of any room. Description provided herein represents the opinion of the author, is given in good faith but should not be constructed as statements of fact. The particulars and photograph are for guidance only.