



149 Upper Richmond Road, Putney, London, SW15 2TX

t: 020 8788 8822

e: putney@allanfuller.co.uk

www.allanfuller.co.uk

## Dryburgh Road London, SW15

A beautifully presented and recently redecorated two bedroom flat available to rent in a desirable location in West Putney.

The property is made up of a spacious open plan kitchen/living area which leads out to a larger than average balcony. There are two double bedrooms, one with an en suite and a further bathroom. The property is located on the first floor of this secure building and also has the benefit of lift access and an allocated off street parking space.

Offered furnished, available late October.

Wandsworth council tax band G

EPC rating B

5 week security deposit required



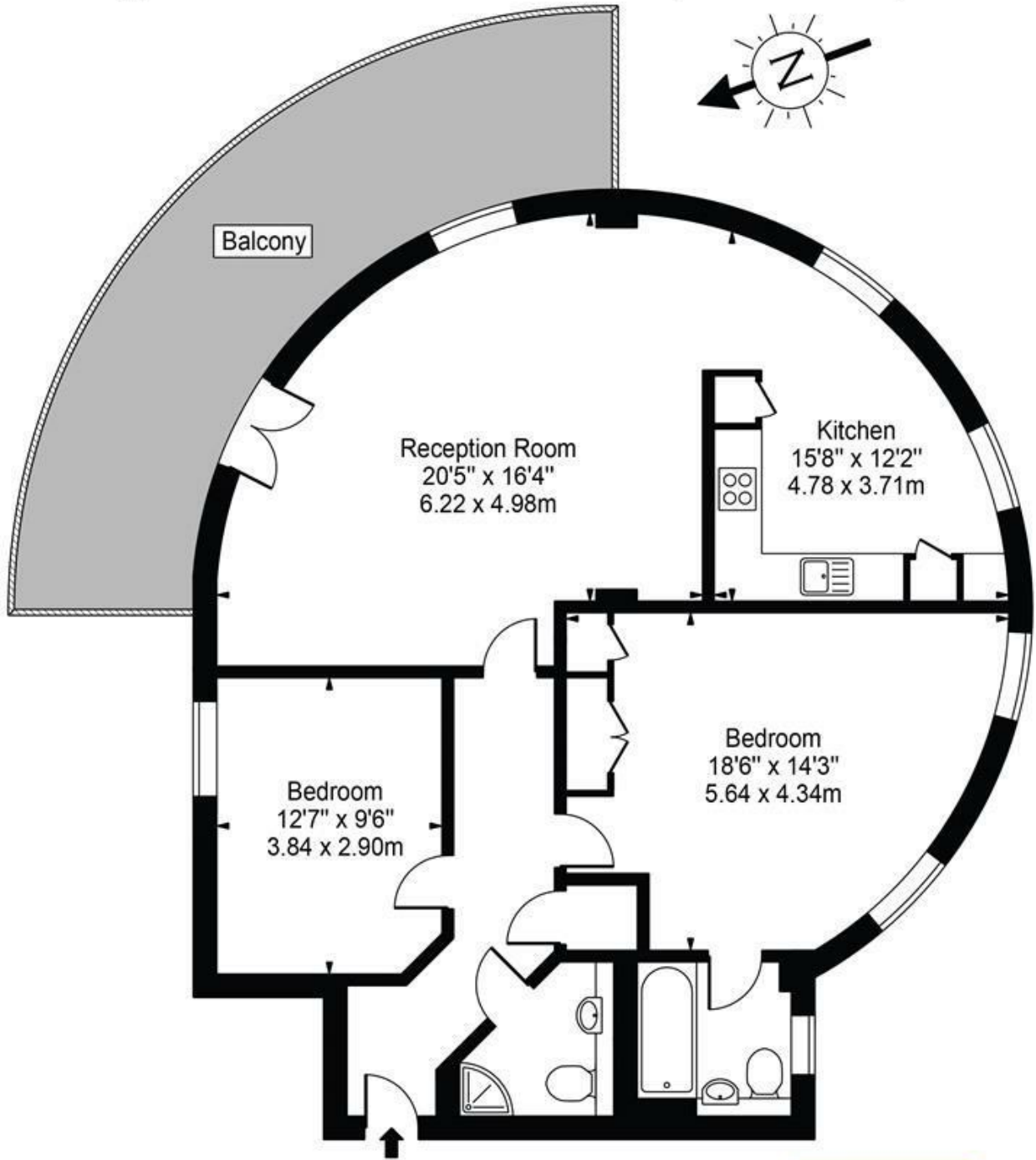
**£2,800 PCM**





# Mercury Mansions, SW15

Approx. Gross Internal Area 1023 Sq Ft - 95.04 Sq M



Second Floor



For Illustration Purposes Only - Not To Scale Floor Plan by Mira Nikolova Photography

This floor plan should be used as a general outline for guidance only and does not constitute in whole or in part an offer or contract. Any intending purchaser or lessee should satisfy themselves by inspection, searches, enquiries and full survey as to the correctness of each statement. Any areas, measurements or distances quoted are approximate and should not be used to value a property or be the basis of any sale or let.

With regards to any information supplied by us in relation to lease, ground rent and service charge it is essential that you have this information checked by your solicitor. We have transmitted information supplied to us by the vendor of the property but we have not been able to inspect the lease to check its accuracy. Please note that we have not tested any of the equipment or utilities at this property, nothing in these particulars shall be deemed a statement that the property is in good condition or otherwise nor that any of the services or facilities are in good working order. Measurements are approximate they were taken with a sonic tape, are as accurate as possible and usually measured from the widest point of any room. Description provided herein represents the opinion of the author, is given in good faith but should not be constructed as statements of fact. The particulars and photographs are for guidance only.