



149 Upper Richmond Road, Putney, London, SW15 2TX

t: 020 8788 8822

e: putney@allanfuller.co.uk

www.allanfuller.co.uk

Farmers Road London, SE5

A modern two double bedroom house. The property ranges over two floors, with master bedroom with a built-in wardrobe, second double bedroom with a modern bathroom. On the other floor there is a stunning open plan reception room/fitted kitchen with full length windows to the front of the building and a glass balustrade.

Farmers Road is a quiet road, with easy access to the bus links on Camberwell New Road and both Kennington & Oval Northern line Tube Stations.

Available part furnished from 22nd October

EPC rating D

Southwark Council Tax Band C

5 week security deposit required



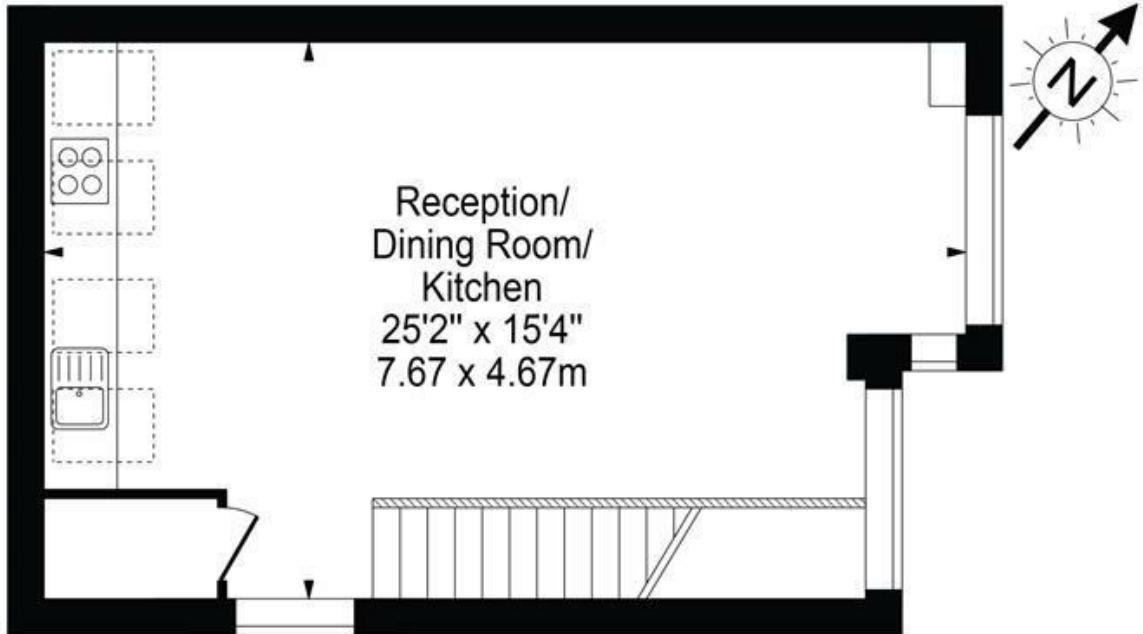
£2,100 PCM



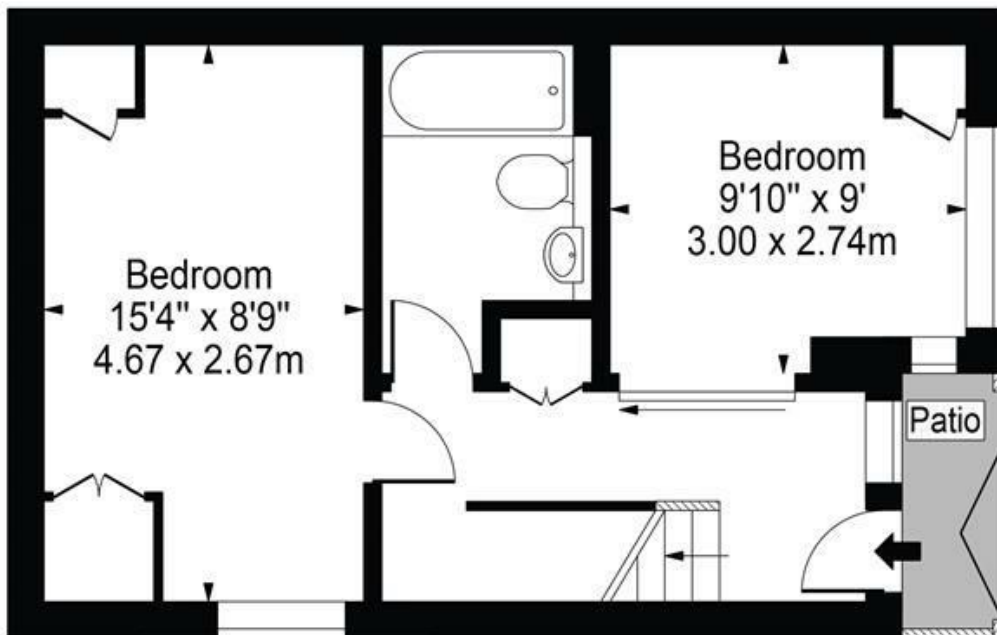


Farmers Road, SE5

Approx. Gross Internal Area 730 Sq Ft - 67.82 Sq M



First Floor



Ground Floor

ALLAN FULLER
EST. 1983

©

For Illustration Purposes Only - Not To Scale Floor Plan by Mira Nikolova Photography

This floor plan should be used as a general outline for guidance only and does not constitute in whole or in part an offer or contract. Any intending purchaser or lessee should satisfy themselves by inspection, searches, enquiries and full survey as to the correctness of each statement. Any areas, measurements or distances quoted are approximate and should not be used to value a property or be the basis of any sale or let.

With regards to any information supplied by us in relation to lease, ground rent and service charge it is essential that you have this information checked by your solicitor. We have transmitted information supplied to us by the vendor of the property but we have not been able to inspect the lease to check its accuracy. Please note that we have not tested any of the equipment or utilities at this property, nothing in these particulars shall be deemed a statement that the property is in good condition or otherwise nor that any of the services or facilities are in good working order. Measurements are approximate they were taken with a sonic tape, are as accurate as possible and usually measured from the widest point of any room. Description provided herein represents the opinion of the author, is given in good faith but should not be constructed as statements of fact. The particulars and photograph are for guidance only.