

ALLAN FULLER
— EST. 1983 —

149 Upper Richmond Road, Putney, London, SW15 2TX

t: 020 8788 8822

e: putney@allanfuller.co.uk

www.allanfuller.co.uk

Glendarvon Street London, SW15

A fantastic opportunity to purchase this truly spacious four bedroom house, located on this prime West Putney river road. The accommodation is arranged over three floors with a large reception room on the ground floor with wooden floors and an eat in kitchen to the rear. The kitchen leads out to a private patio garden. Upstairs, there are four double bedrooms a main bathroom and one en-suite to the master bedroom. There is excellent storage provided in the large cellar, also housing white goods and a further bonus, is a large roof terrace.

Glendarvon Street is located off the Lower Richmond Road and leads directly to the River Thames. The shopping facilities of Putney High Street, Putney Bridge underground station and Putney mainline station are within easy reach and there are also numerous local bus route into Central London.

EPC - D Wandsworth council tax band F



Asking Price £1,500,000
Freehold

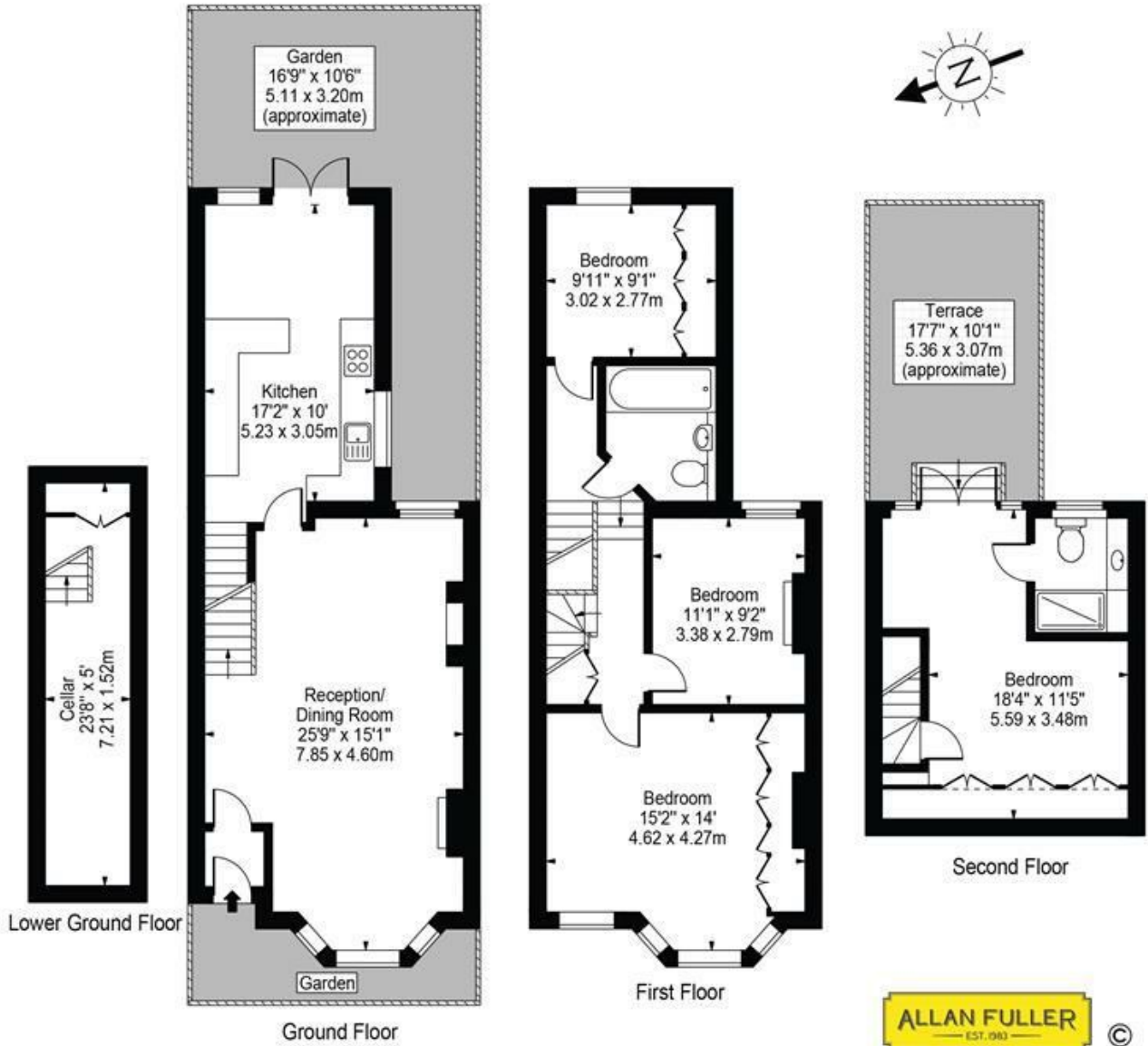




Glendarvon Street, SW15

Approx. Total Internal Area 1482 Sq Ft - 137.68 Sq M
(Including Restricted Height Area)

Approx. Gross Internal Area 1457 Sq Ft - 135.36 Sq M
(Excluding Restricted Height Area)



For Illustration Purposes Only - Not To Scale Floor Plan by Mira Nikolova Photography

This floor plan should be used as a general outline for guidance only and does not constitute in whole or in part an offer or contract. Any intending purchaser or lessee should satisfy themselves by inspection, searches, enquiries and full survey as to the correctness of each statement. Any areas, measurements or distances quoted are approximate and should not be used to value a property or be the basis of any sale or let.

With regards to any information supplied by us in relation to lease, ground rent and service charge it is essential that you have this information checked by your solicitor. We have transmitted information supplied to us by the vendor of the property but we have not been able to inspect the lease to check its accuracy. Please note that we have not tested any of the equipment or utilities at this property, nothing in these particulars shall be deemed a statement that the property is in good condition or otherwise nor that any of the services or facilities are in good working order. Measurements are approximate they were taken with a sonic tape, are as accurate as possible and usually measured from the widest point of any room. Description provided herein represents the opinion of the author, is given in good faith but should not be constructed as statements of fact. The particulars and photograph are for guidance only.