

**ALLAN FULLER**  
— EST. 1983 —

149 Upper Richmond Road, Putney, London, SW15 2TX

t: 020 8788 8822

e: putney@allanfuller.co.uk

www.allanfuller.co.uk

## Strathan Close London, SW18

Fantastic views across London and four bedrooms are offered in this exceedingly spacious split level apartment. Occupying the 6th and 7th floors the accommodation comprises of a bright and spacious living room with ample room for a large dining table and chairs and doors to balcony, separate fitted kitchen, shower room and separate cloakroom.

Strathan Close is located close to a wide variety of shops, bars and restaurants in Southfields and Putney, and is within easy reach of the green spaces of Putney Heath as well as being a short walk to East Putney tube station.

EPC- C Wandsworth Council Tax Band C



£550,000

Leasehold



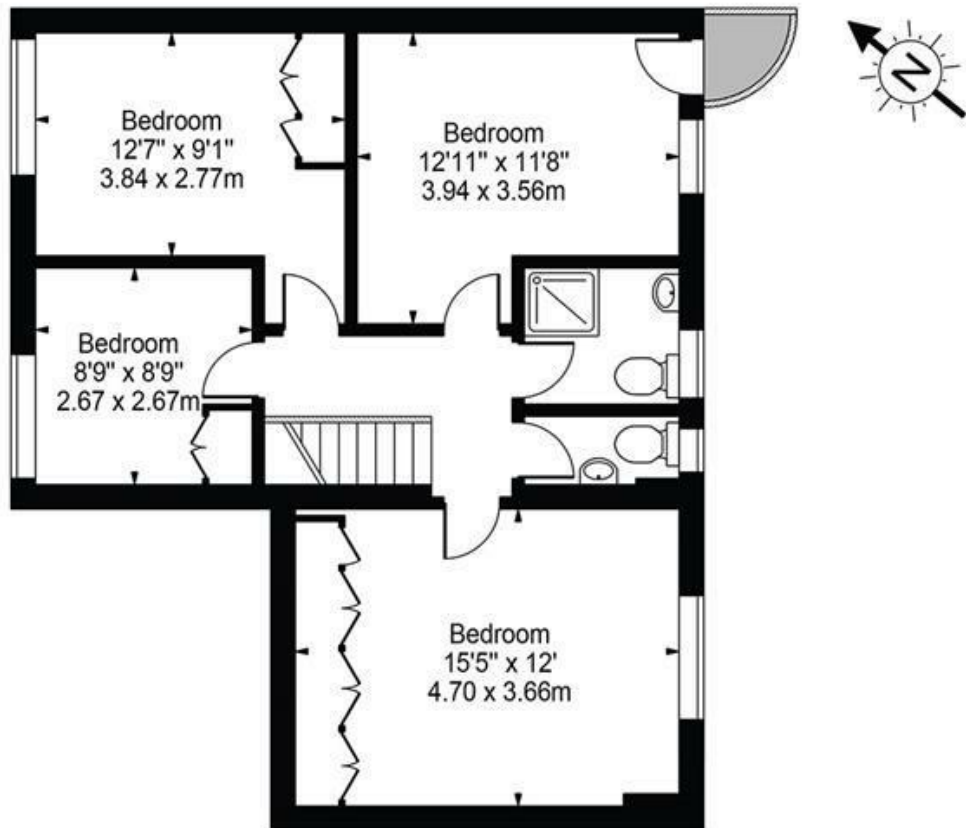




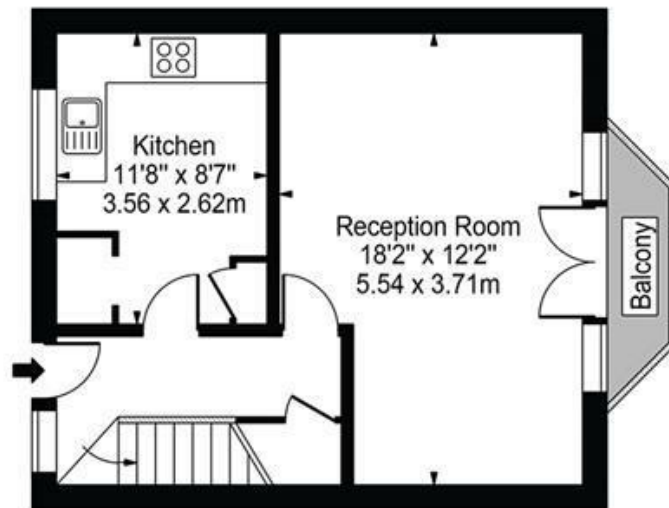


# Strathan Close, SW18

Approx. Gross Internal Area 1063 Sq Ft - 98.76 Sq M



Seventh Floor



Sixth Floor



For Illustration Purposes Only - Not To Scale Floor Plan by Mira Nikolova Photography

This floor plan should be used as a general outline for guidance only and does not constitute in whole or in part an offer or contract. Any intending purchaser or lessee should satisfy themselves by inspection, searches, enquiries and full survey as to the correctness of each statement. Any areas, measurements or distances quoted are approximate and should not be used to value a property or be the basis of any sale or let.

With regards to any information supplied by us in relation to lease, ground rent and service charge it is essential that you have this information checked by your solicitor. We have transmitted information supplied to us by the vendor of the property but we have not been able to inspect the lease to check its accuracy. Please note that we have not tested any of the equipment or utilities at this property, nothing in these particulars shall be deemed a statement that the property is in good condition or otherwise nor that any of the services or facilities are in good working order. Measurements are approximate they were taken with a sonic tape, are as accurate as possible and usually measured from the widest point of any room. Description provided herein represents the opinion of the author, is given in good faith but should not be constructed as statements of fact. The particulars and photograph are for guidance only.