



149 Upper Richmond Road, Putney, London, SW15 2TX

t: 020 8788 8822

e: putney@allanfuller.co.uk

www.allanfuller.co.uk

Osiers Road London, SW18

A stunningly split level, two double bedroom apartment. This lovely home is bright and spacious, with both double bedrooms on the second floor, one with doors opening directly onto a balcony. There are two bathrooms, both finished to an extremely high standard. The first floor has a very generous living room with open plan kitchen/dining room and equally with doors onto its own balcony. This gem of a property, benefits from ample storage and underground parking.

The local area is renowned for its easy transport links to and from the city 20 minutes from Putney Station to Victoria and 29 minutes from East Putney Tube Station to Oxford Circus. Besides the fantastic transport on offer, Putney has a vibrant and buzzing lifestyle with the Thames on your doorstep and ample bars and restaurants serving the locality.

EPC - D

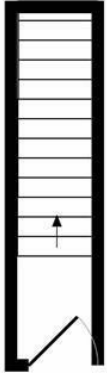


Asking Price £550,000

Leasehold



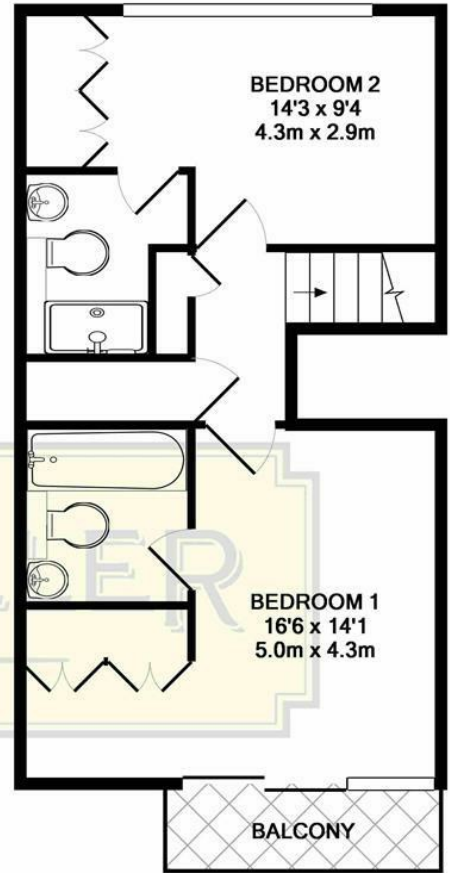




GROUND FLOOR
APPROX. FLOOR
AREA 48 SQ.FT.
(4.5 SQ.M.)



1ST FLOOR
APPROX. FLOOR
AREA 498 SQ.FT.
(46.2 SQ.M.)



2ND FLOOR
APPROX. FLOOR
AREA 481 SQ.FT.
(44.7 SQ.M.)

OSIERS ROAD, SW18
TOTAL APPROX. FLOOR AREA 1026 SQ.FT. (95.3 SQ.M.)

Whilst every attempt has been made to ensure the accuracy of the floor plan contained here, measurements of doors, windows, rooms and any other items are approximate and no responsibility is taken for any error, omission, or mis-statement. This plan is for illustrative purposes only and should not be used as such by any prospective purchaser. The services, systems and appliances shown have not been tested and no guarantee as to their operability or efficiency can be given
Made with Metropix ©2018

With regards to any information supplied by us in relation to lease, ground rent and service charge it is essential that you have this information checked by your solicitor. We have transmitted information supplied to us by the vendor of the property but we have not been able to inspect the lease to check its accuracy. Please note that we have not tested any of the equipment or utilities at this property, nothing in these particulars shall be deemed a statement that the property is in good condition or otherwise nor that any of the services or facilities are in good working order. Measurements are approximate they were taken with a sonic tape, are as accurate as possible and usually measured from the widest point of any room. Description provided herein represents the opinion of the author, is given in good faith but should not be constructed as statements of fact. The particulars and photographs are for guidance only.