

**ALLAN FULLER**  
— EST. 1983 —

149 Upper Richmond Road, Putney, London, SW15 2TX

t: 020 8788 8822

e: putney@allanfuller.co.uk

www.allanfuller.co.uk

## Wilton Road London, SW19

A very well presented, two double bedroom first floor flat in this lovely period property close to Colliers Wood Station and the A24.

The property offers laminate wooden flooring throughout and comprises a very good-sized reception room, a separate modern fully fitted kitchen with white gloss units and black granite worksurfaces (includes fridge/freezer and dishwasher), there are two excellent double bedrooms, plus a stylish fully tiled bathroom with a separate shower cubicle.

Wilton Road is located in one of Colliers Wood's most favoured roads and is just a short walk from Colliers Wood Station (Northern Line), plus within walking distance of St Georges Hospital and St Georges, University of London.

Available from the 30th October

Unfurnished

Merton Council Tax Band C



**£2,000 PCM**



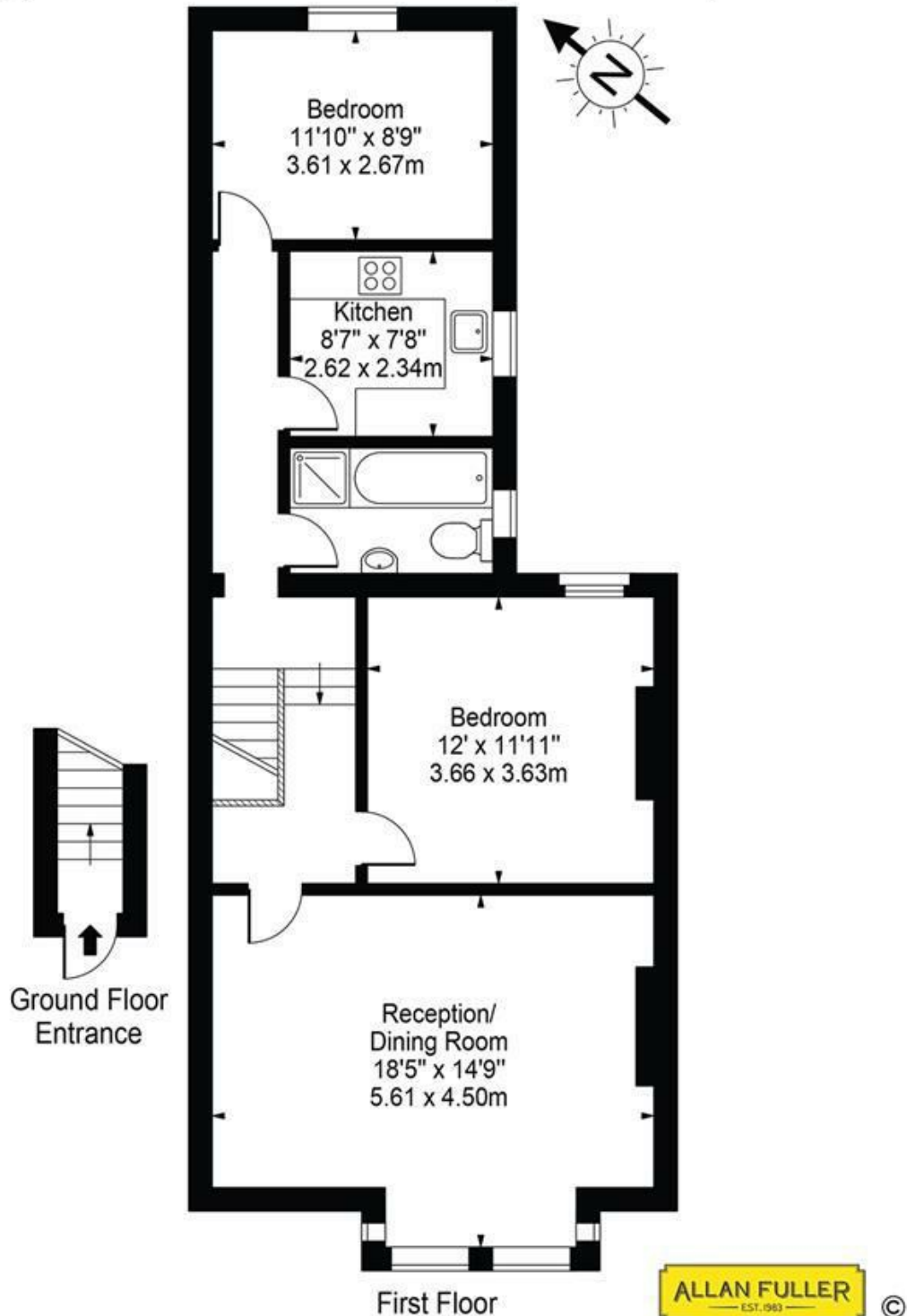






# Wilton Road, SW19

Approx. Gross Internal Area 779 Sq Ft - 72.37 Sq M



For Illustration Purposes Only - Not To Scale Floor Plan by Mira Nikolova Photography

This floor plan should be used as a general outline for guidance only and does not constitute in whole or in part an offer or contract. Any intending purchaser or lessee should satisfy themselves by inspection, searches, enquiries and full survey as to the correctness of each statement. Any areas, measurements or distances quoted are approximate and should not be used to value a property or be the basis of any sale or let.

With regards to any information supplied by us in relation to lease, ground rent and service charge it is essential that you have this information checked by your solicitor. We have transmitted information supplied to us by the vendor of the property but we have not been able to inspect the lease to check its accuracy. Please note that we have not tested any of the equipment or utilities at this property, nothing in these particulars shall be deemed a statement that the property is in good condition or otherwise nor that any of the services or facilities are in good working order. Measurements are approximate they were taken with a sonic tape, are as accurate as possible and usually measured from the widest point of any room. Description provided herein represents the opinion of the author, is given in good faith but should not be constructed as statements of fact. The particulars and photograph are for guidance only.