

**ALLAN FULLER**  
— EST. 1983 —

149 Upper Richmond Road, Putney, London, SW15 2TX

t: 020 8788 8822

e: putney@allanfuller.co.uk

www.allanfuller.co.uk

## Cortis Road London, SW15

A good size two double bedroom property situated on the third floor of this purpose built block. The property needs some up-dating but would make a great first purchase.. The accommodation comprises of living room with doors to private balcony , two bedrooms, kitchen bathroom and sperate cloakroom Other advantages are communal gardens and permit parking

Cortis Road is located just moments from the green open spaces of Putney Heath, Wimbledon Common and Richmond Park with the local amenities of central Putney also within easy reach. With excellent direct bus services to Putney High Street, the West End, and The City with additional transport links of East Putney Underground and Putney Mainline stations offering easy routes into London Victoria and London Waterloo.  
EPC - C Wandsworth Council Tax Band B



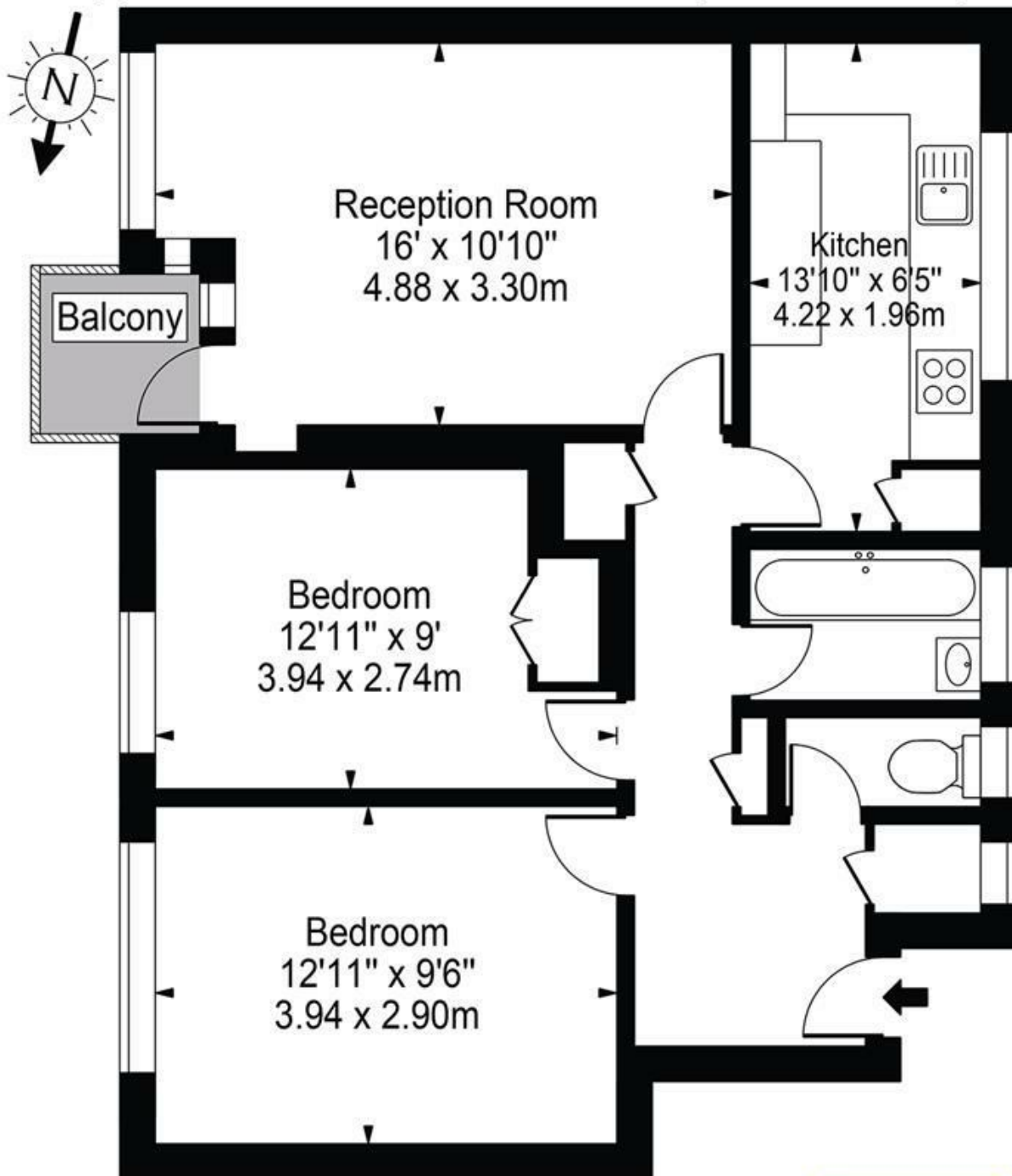
**Asking Price £325,000**  
**Leasehold**





# Cortis Road, SW15

Approx. Gross Internal Area 666 Sq Ft - 61.87 Sq M



Third Floor

ALLAN FULLER  
EST. 1983

©

For Illustration Purposes Only - Not To Scale Floor Plan by Mira Nikolova Photography

This floor plan should be used as a general outline for guidance only and does not constitute in whole or in part an offer or contract. Any intending purchaser or lessee should satisfy themselves by inspection, searches, enquiries and full survey as to the correctness of each statement. Any areas, measurements or distances quoted are approximate and should not be used to value a property or be the basis of any sale or let.

With regards to any information supplied by us in relation to lease, ground rent and service charge it is essential that you have this information checked by your solicitor. We have transmitted information supplied to us by the vendor of the property but we have not been able to inspect the lease to check its accuracy. Please note that we have not tested any of the equipment or utilities at this property, nothing in these particulars shall be deemed a statement that the property is in good condition or otherwise nor that any of the services or facilities are in good working order. Measurements are approximate they were taken with a sonic tape, are as accurate as possible and usually measured from the widest point of any room. Description provided herein represents the opinion of the author, is given in good faith but should not be constructed as statements of fact. The particulars and photograph are for guidance only.