



149 Upper Richmond Road, Putney, London, SW15 2TX

t: 020 8788 8822

e: putney@allanfuller.co.uk

www.allanfuller.co.uk

## Fulham High Street London, SW6

This superb two bedroom apartment, is set within this iconic building just a stones throw away from Bishops Park with its glorious grounds, tea rooms and a Grade 11 listed building. Also nearby is Putney Pier and The Uber Clipper giving access to Westminster and beyond. And if that wasn't enough Putney Bridge station is on your doorstep and the Main Line a short stroll down the High Street.

With a light and contemporary feel throughout, this exceptional home enjoys two bedrooms, substantial living room with breath-taking views over London's rooftops, fitted kitchen with integrated appliances and bathroom with shower connection.

Offered furnished, available now  
EPC rating C  
Hammersmith & Fulham borough - Council tax band D  
5 week security deposit required



**£2,450 PCM**

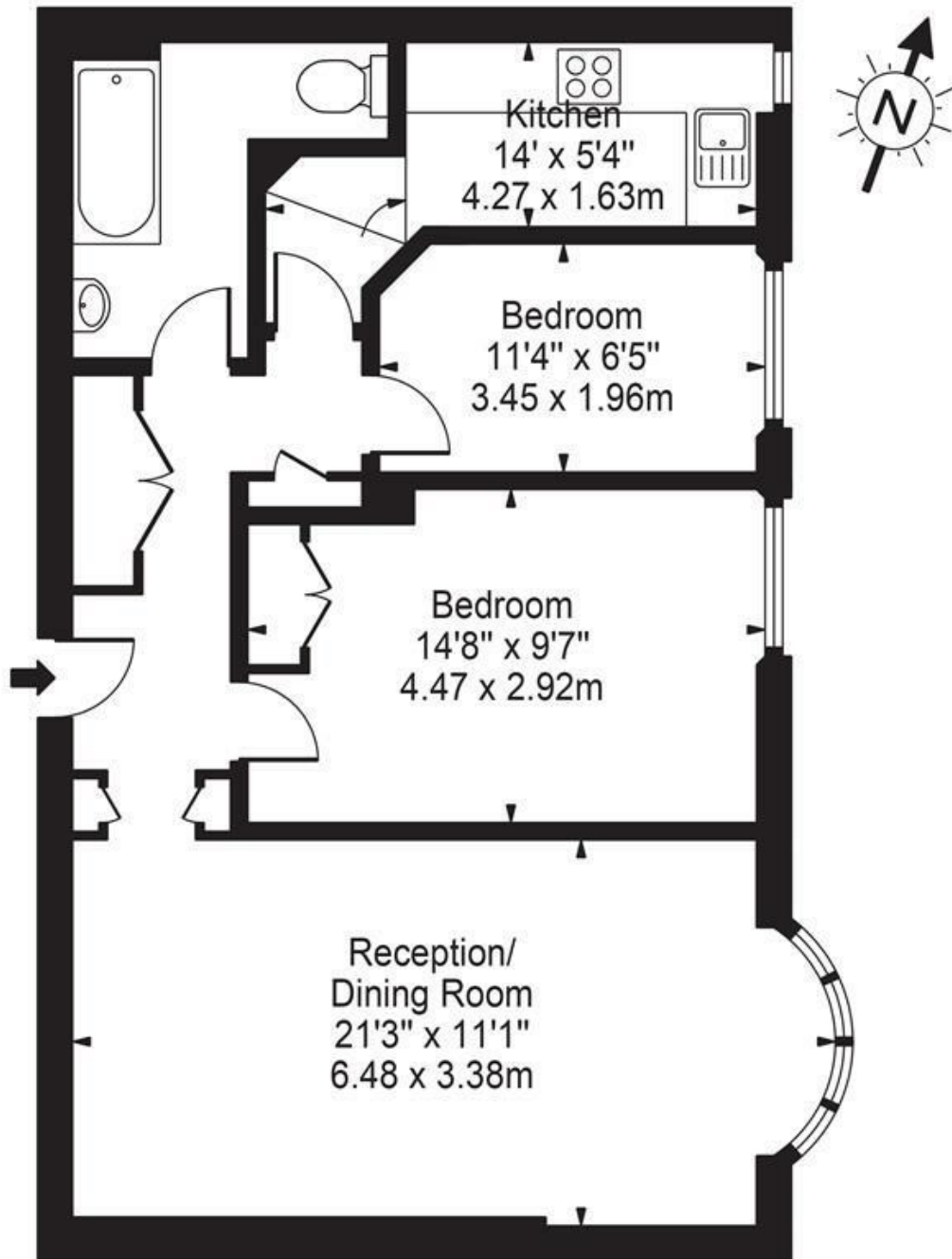






# Parkview Court, SW6

Approx. Gross Internal Area 668 Sq Ft - 62.06 Sq M



Fifth Floor



©

For Illustration Purposes Only - Not To Scale Floor Plan by Mira Nikolova Photography

This floor plan should be used as a general outline for guidance only and does not constitute in whole or in part an offer or contract. Any intending purchaser or lessee should satisfy themselves by inspection, searches, enquiries and full survey as to the correctness of each statement. Any areas, measurements or distances quoted are approximate and should not be used to value a property or be the basis of any sale or let.

With regards to any information supplied by us in relation to lease, ground rent and service charge it is essential that you have this information checked by your solicitor. We have transmitted information supplied to us by the vendor of the property but we have not been able to inspect the lease to check its accuracy. Please note that we have not tested any of the equipment or utilities at this property, nothing in these particulars shall be deemed a statement that the property is in good condition or otherwise nor that any of the services or facilities are in good working order. Measurements are approximate they were taken with a sonic tape, are as accurate as possible and usually measured from the widest point of any room. Description provided herein represents the opinion of the author, is given in good faith but should not be constructed as statements of fact. The particulars and photograph are for guidance only.