

ALLAN FULLER
— EST. 1983 —

149 Upper Richmond Road, Putney, London, SW15 2TX

t: 020 8788 8822

e: putney@allanfuller.co.uk

www.allanfuller.co.uk

Oakhill Road London, SW15

A smartly presented garden apartment forming part of an Edwardian building situated in a convenient East Putney location. Whilst offering good sized accommodation already there is also scope for extending, re-modelling, subject to the usual consents.

Situated on this popular tree lined residential road which runs between Putney Bridge Road and the Upper Richmond Road, giving access to both East Putney and Putney Mainline stations as well as the green open spaces of Wandsworth Park and the River Thames and the sought after Brandlehow School.

EPC - D Wandsworth Council Tax Band E



£800,000

Leasehold - Share of Freehold



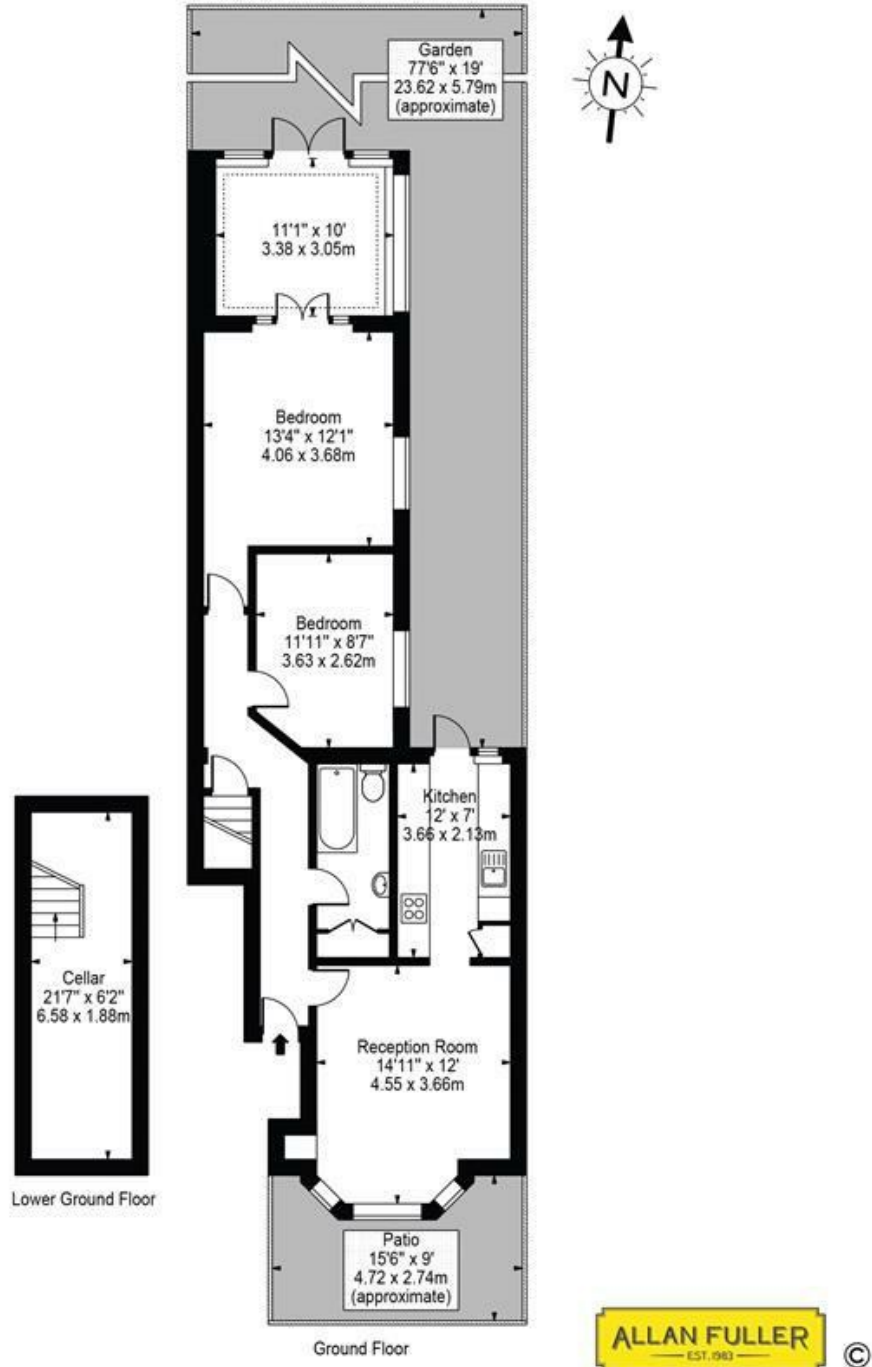


Oakhill Road, SW15

Approx. Total Internal Area 962 Sq Ft - 89.37 Sq M
(Including Cellar)

Approx. Gross Internal Area 829 Sq Ft - 77.02 Sq M
(Excluding Cellar)

Approx. Total Internal Area Of Cellar 133 Sq Ft - 12.37 Sq M



For Illustration Purposes Only - Not To Scale Floor Plan by Mira Nikolova Photography

This floor plan should be used as a general outline for guidance only and does not constitute in whole or in part an offer or contract. Any intending purchaser or lessee should satisfy themselves by inspection, searches, enquiries and full survey as to the correctness of each statement. Any areas, measurements or distances quoted are approximate and should not be used to value a property or be the basis of any sale or let.

With regards to any information supplied by us in relation to lease, ground rent and service charge it is essential that you have this information checked by your solicitor. We have transmitted information supplied to us by the vendor of the property but we have not been able to inspect the lease to check its accuracy. Please note that we have not tested any of the equipment or utilities at this property, nothing in these particulars shall be deemed a statement that the property is in good condition or otherwise nor that any of the services or facilities are in good working order. Measurements are approximate they were taken with a sonic tape, are as accurate as possible and usually measured from the widest point of any room. Description provided herein represents the opinion of the author, is given in good faith but should not be constructed as statements of fact. The particulars and photograph are for guidance only.