



149 Upper Richmond Road, Putney, London, SW15 2TX

t: 020 8788 8822

e: putney@allanfuller.co.uk

www.allanfuller.co.uk

Warwick Drive London, SW15

This fourth floor apartment is both spacious and bright throughout, offering over 1000 square ft. of lateral living space. Nicely presented the accommodation comprises of two double bedrooms, two bathrooms and a 24ft south facing reception room which opens onto a south facing balcony. In addition there are two secure underground parking spaces.

Willow Lodge also benefits from an on-site caretaker and secluded communal gardens, and is ideally placed for easy access into central London, local amenities and a short walk to Barnes station, with excellent bus links as well. There is no onward chain.

EPC - C Council Tax Band E



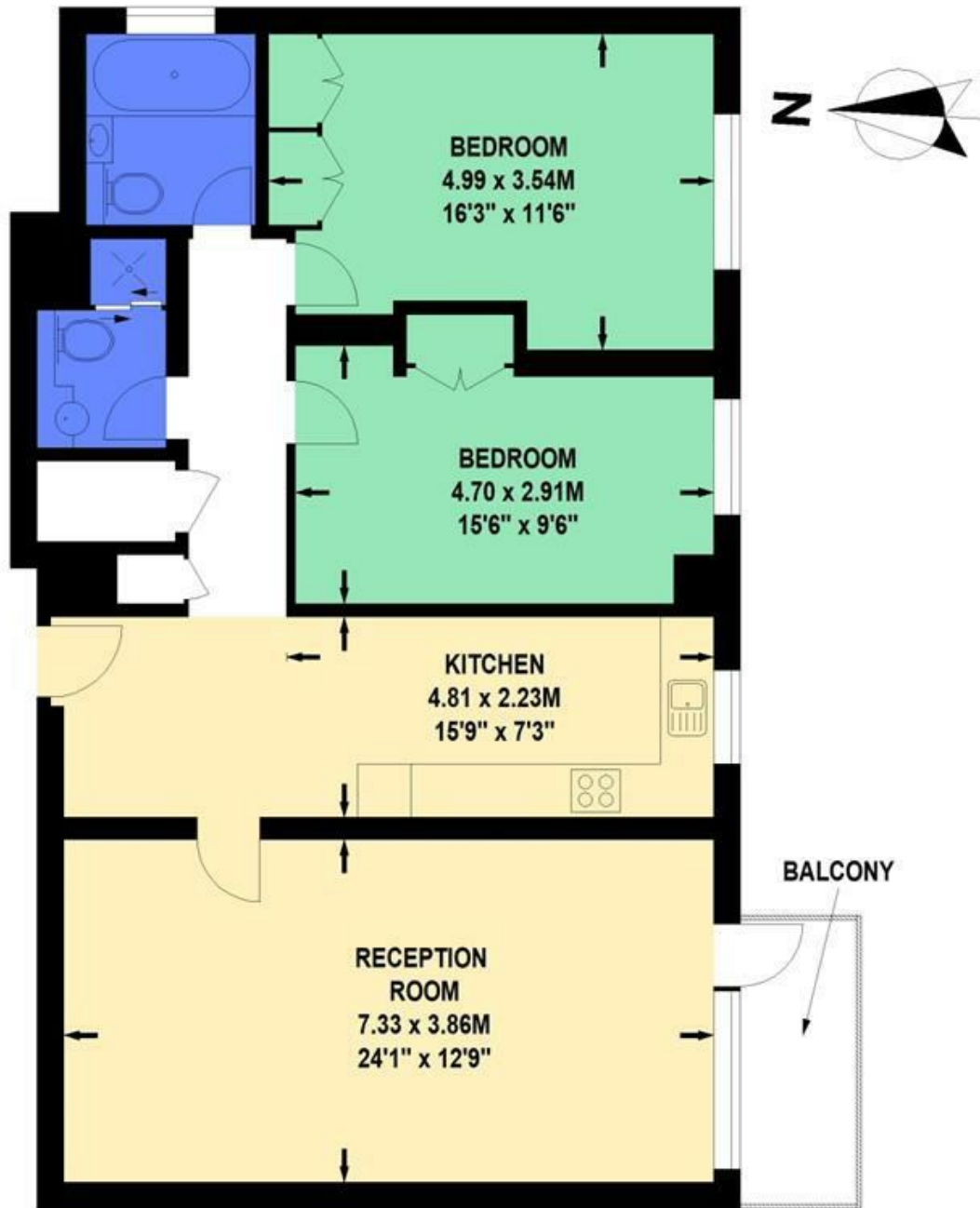
Asking Price £600,000
Share of Freehold





Willow Lodge, Warwick Drive, SW15

Approximate Gross Internal Area 94 sq.m / 1012 sq.ft



Fourth Floor

Floor Plan produced for Allan Fuller by Mays Floorplans © . Tel 020 3397 4594

Illustration for identification purposes only, not to scale

All measurements are maximum, and include wardrobes and window bays where applicable

With regards to any information supplied by us in relation to lease, ground rent and service charge it is essential that you have this information checked by your solicitor. We have transmitted information supplied to us by the vendor of the property but we have not been able to inspect the lease to check its accuracy. Please note that we have not tested any of the equipment or utilities at this property, nothing in these particulars shall be deemed a statement that the property is in good condition or otherwise nor that any of the services or facilities are in good working order. Measurements are approximate they were taken with a sonic tape, are as accurate as possible and usually measured from the widest point of any room. Description provided herein represents the opinion of the author, is given in good faith but should not be constructed as statements of fact. The particulars and photograph are for guidance only.