



149 Upper Richmond Road, Putney, London, SW15 2TX

t: 020 8788 8822

e: putney@allanfuller.co.uk

www.allanfuller.co.uk

Kersfield Road London, SW15

This simply stunning, architecturally designed studio flat, is set within this quietly located private development, just off Putney Hill. This property enjoys state of the art fittings throughout, light and bright, open plan living space with gorgeous parquet flooring, with a fully fitted kitchen with built in appliances, bathroom with shower and double bedroom with ample storage throughout. A perfect use of space.

Kersfield Road is just off Putney Hill, giving easy access to Putney High Street, East Putney Underground station (District Line), with Putney Mainline Station, as well as an array of restaurants, bars and the green open spaces nearby.

Wandsworth Council Tax Band B

EPC Rating C

5 week security deposit required

Note the person letting this property is connected to this agency



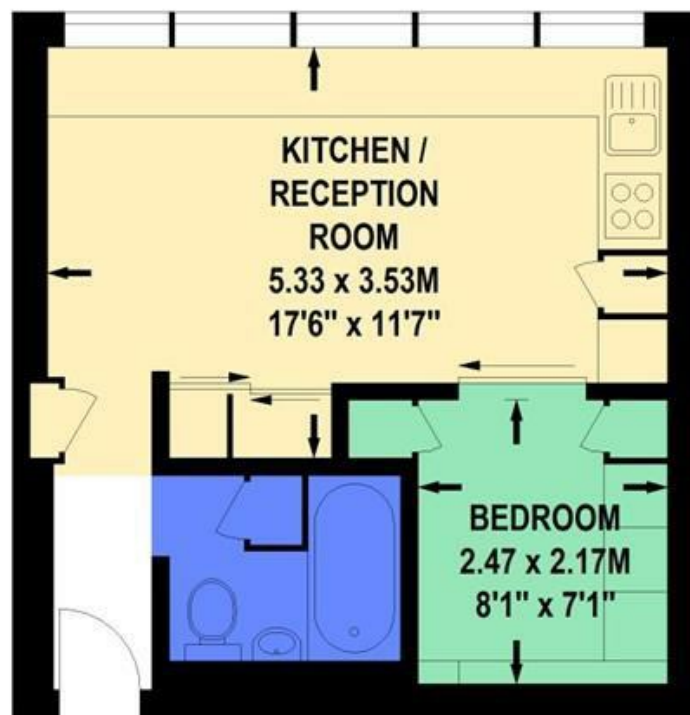
£1,450 PCM





Kersfield House, Kersfield Road, SW15

Approximate Gross Internal Area 29 sq.m / 312 sq.ft



Second Floor

Floor Plan produced for Allan Fuller by Mays Floorplans © . Tel 020 3397 4594

Illustration for identification purposes only, not to scale

All measurements are maximum, and include wardrobes and window bays where applicable

With regards to any information supplied by us in relation to lease, ground rent and service charge it is essential that you have this information checked by your solicitor. We have transmitted information supplied to us by the vendor of the property but we have not been able to inspect the lease to check its accuracy. Please note that we have not tested any of the equipment or utilities at this property, nothing in these particulars shall be deemed a statement that the property is in good condition or otherwise nor that any of the services or facilities are in good working order. Measurements are approximate they were taken with a sonic tape, are as accurate as possible and usually measured from the widest point of any room. Description provided herein represents the opinion of the author, is given in good faith but should not be constructed as statements of fact. The particulars and photograph are for guidance only.