

ALLAN FULLER
— EST. 1983 —

149 Upper Richmond Road, Putney, London, SW15 2TX

t: 020 8788 8822

e: putney@allanfuller.co.uk

www.allanfuller.co.uk

Upper Richmond Road London, SW15

A simply stunning & spacious, one bedroom top floor apartment. This gorgeous home is in excellent condition and offers a reception room with large windows & laminate flooring, a separate modern fitted kitchen, a good sized double bedroom with built in storage and a contemporary bathroom. The added bonus for this apartment, is a perfect study area with great walk in storage. There is also access to a communal garden.

This home is positioned on the 7th floor of this development with the most stunning views across the whole of London. It is perfectly located just a stone's throw from Putney High Street, with all its excellent shopping facilities, bars and restaurants along with Putney Mainline Station and within a short distance from East Putney Underground Station (District Line). Parking not included.

HEATING & HOT WATER BILLS INCLUDED IN YOUR RENT

Offered unfurnished, available 31st August

5 week security deposit required

Wandsworth council tax band C



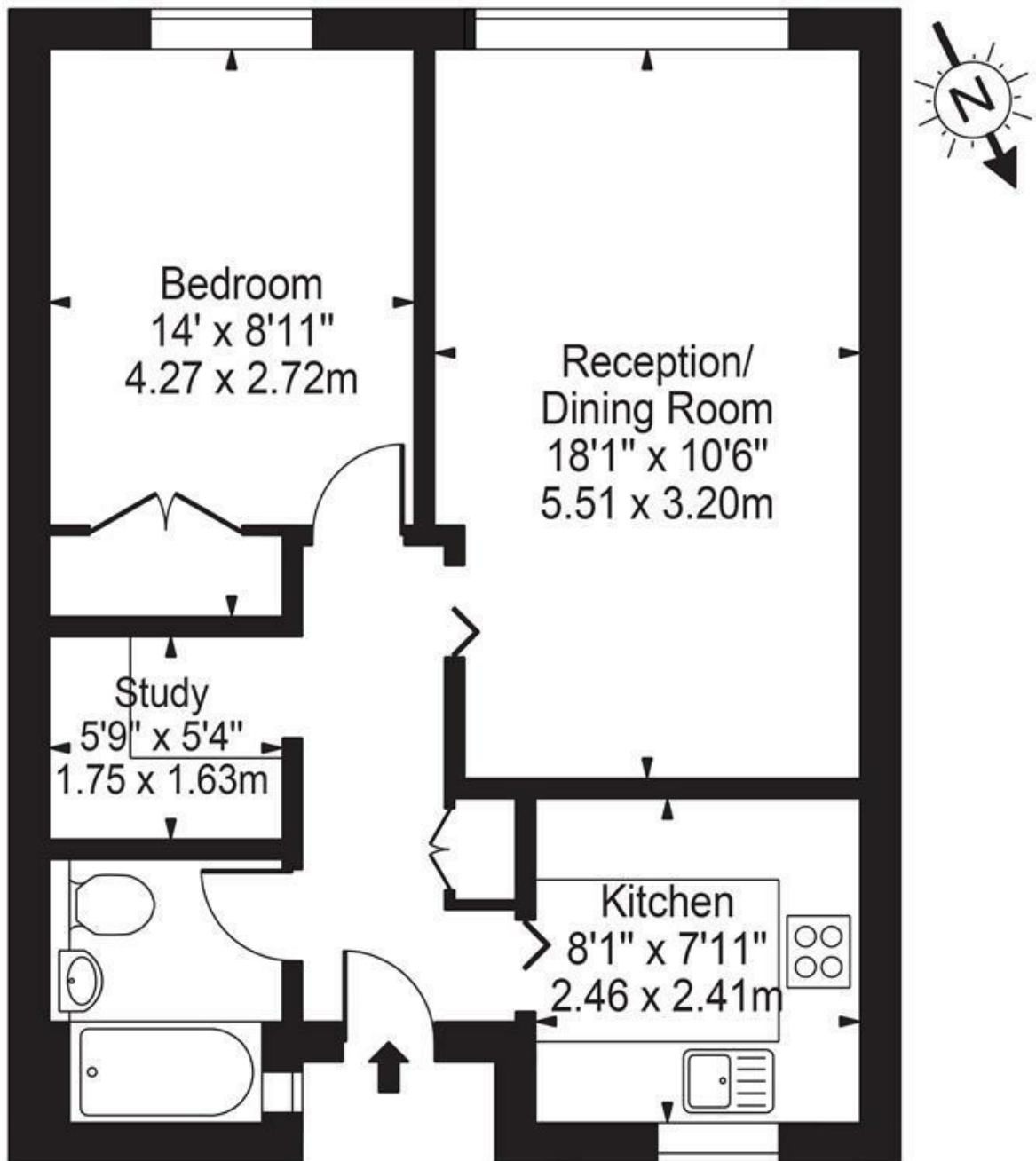
£1,750 PCM





Upper Richmond Road, SW15

Approx. Gross Internal Area 512 Sq Ft - 47.57 Sq M



Seventh Floor



For Illustration Purposes Only - Not To Scale Floor Plan by Mira Nikolova Photography

This floor plan should be used as a general outline for guidance only and does not constitute in whole or in part an offer or contract. Any intending purchaser or lessee should satisfy themselves by inspection, searches, enquiries and full survey as to the correctness of each statement. Any areas, measurements or distances quoted are approximate and should not be used to value a property or be the basis of any sale or let.

With regards to any information supplied by us in relation to lease, ground rent and service charge it is essential that you have this information checked by your solicitor. We have transmitted information supplied to us by the vendor of the property but we have not been able to inspect the lease to check its accuracy. Please note that we have not tested any of the equipment or utilities at this property, nothing in these particulars shall be deemed a statement that the property is in good condition or otherwise nor that any of the services or facilities are in good working order. Measurements are approximate they were taken with a sonic tape, are as accurate as possible and usually measured from the widest point of any room. Description provided herein represents the opinion of the author, is given in good faith but should not be constructed as statements of fact. The particulars and photograph are for guidance only.