



149 Upper Richmond Road, Putney, London, SW15 2TX

t: 020 8788 8822

e: putney@allanfuller.co.uk

www.allanfuller.co.uk

Putney Hill London, SW15

A fabulous opportunity to rent this superb studio apartment, set within this sought after residential building just off Putney Hill. The property is made up of a bright and spacious living space benefiting from a fold away double bed, wooden flooring with a separate fully fitted kitchen with integrated appliances and bathroom with shower over the bath.

Hill Court is an extremely popular modern building conveniently located within a short walk from Putney's shops, bars and restaurants, not forgetting Putney's excellent transport links in and out of London of Putney Mainline Station and East Putney Tube Station.

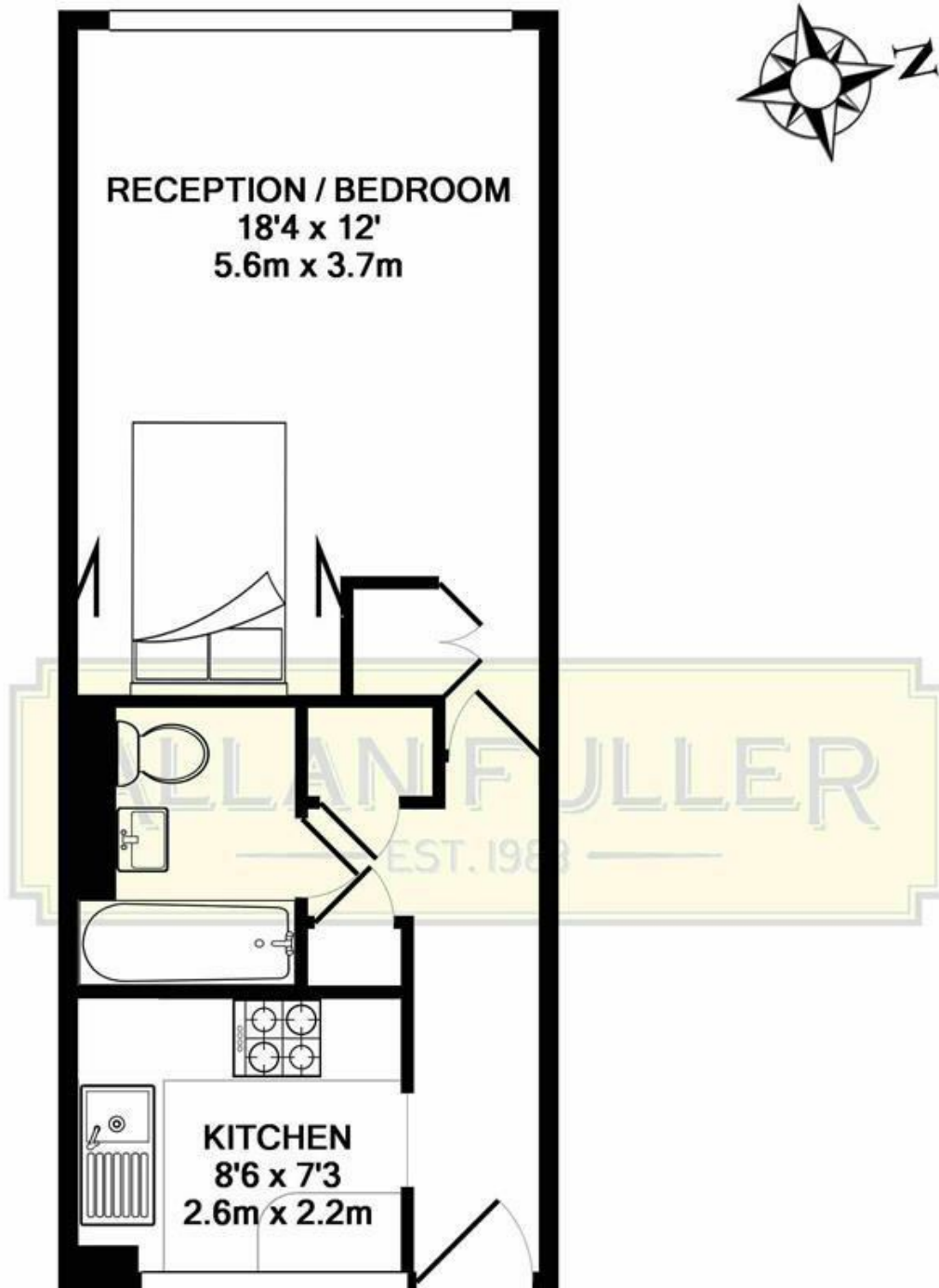
Available furnished from mid September
5 week security deposit required
Wandsworth council tax band C



£1,350 PCM







PUTNEY HILL, SW15

TOTAL APPROX. FLOOR AREA 370 SQ.FT. (34.3 SQ.M.)

Whilst every attempt has been made to ensure the accuracy of the floor plan contained here, measurements of doors, windows, rooms and any other items are approximate and no responsibility is taken for any error, omission, or mis-statement. This plan is for illustrative purposes only and should be used as such by any prospective purchaser. The services, systems and appliances shown have not been tested and no guarantee as to their operability or efficiency can be given

Made with Metropix ©2019

With regards to any information supplied by us in relation to lease, ground rent and service charge it is essential that you have this information checked by your solicitor. We have transmitted information supplied to us by the vendor of the property but we have not been able to inspect the lease to check its accuracy. Please note that we have not tested any of the equipment or utilities at this property, nothing in these particulars shall be deemed a statement that the property is in good condition or otherwise nor that any of the services or facilities are in good working order. Measurements are approximate they were taken with a sonic tape, are as accurate as possible and usually measured from the widest point of any room. Description provided herein represents the opinion of the author, is given in good faith but should not be constructed as statements of fact. The particulars and photograph are for guidance only.