



149 Upper Richmond Road, Putney, London, SW15 2TX

t: 020 8788 8822

e: putney@allanfuller.co.uk

www.allanfuller.co.uk

Landgrove Road London, SW19

Extremely well presented and spacious terraced flat, benefitting from a reception room with open plan living room with doors directly onto a patio, two double bedrooms with built in wardrobes and a contemporary bathroom. This lovely home is located on a quiet tree lined road.

Landgrove Road is ideally placed for easy access into Central Wimbledon with all its excellent shopping facilities and with Wimbledon Mainline Station and District Line as well as the Tramlink. Equally within easy walking distance to Wimbledon Park Underground Station (District Line). Leopold Road Parade, around the corner, provides you with some fantastic local shops including a butchers, stunning florist, restaurants and grocers.

Unfurnished
EPC Rating Band C
Merton Council Tax Band D
Available from the 19th of August



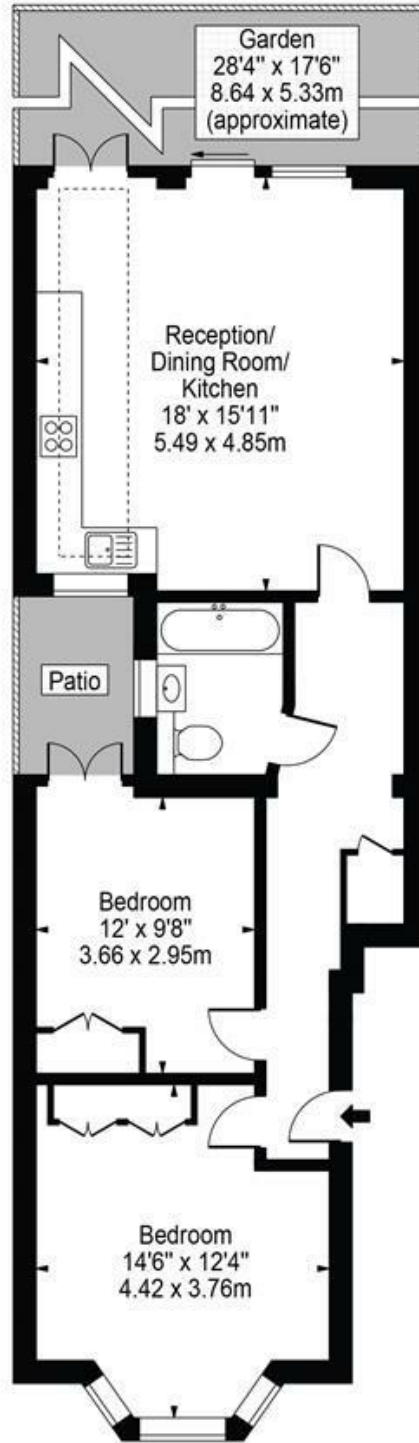
£2,100 PCM





Landgrove Road, SW19

Approx. Gross Internal Area 727 Sq Ft - 67.54 Sq M



Ground Floor



©

For Illustration Purposes Only - Not To Scale Floor Plan by Mira Nikolova Photography

This floor plan should be used as a general outline for guidance only and does not constitute in whole or in part an offer or contract. Any intending purchaser or lessee should satisfy themselves by inspection, searches, enquiries and full survey as to the correctness of each statement. Any areas, measurements or distances quoted are approximate and should not be used to value a property or be the basis of any sale or let.

With regards to any information supplied by us in relation to lease, ground rent and service charge it is essential that you have this information checked by your solicitor. We have transmitted information supplied to us by the vendor of the property but we have not been able to inspect the lease to check its accuracy. Please note that we have not tested any of the equipment or utilities at this property, nothing in these particulars shall be deemed a statement that the property is in good condition or otherwise nor that any of the services or facilities are in good working order. Measurements are approximate they were taken with a sonic tape, are as accurate as possible and usually measured from the widest point of any room. Description provided herein represents the opinion of the author, is given in good faith but should not be constructed as statements of fact. The particulars and photograph are for guidance only.