

ALLAN FULLER
— EST. 1983 —

149 Upper Richmond Road, Putney, London, SW15 2TX

t: 020 8788 8822

e: putney@allanfuller.co.uk

www.allanfuller.co.uk

Manor Fields London, SW15

A beautiful contemporary and bright three bedroom apartment, positioned within this highly sought after private development. This stunning home offers a particularly spacious interior with a fantastic outlook over manicured communal grounds, and comprises three generous double bedrooms, a double reception and dining room, separate modern fitted kitchen and a modern bathroom with an additional separate cloakroom, further benefitting from unallocated off street parking.

Manor Fields enjoys the use of well-maintained extensive communal gardens, and is well located to allow easy access to a selection of local transport links including Putney's train & underground stations as well as Putney High Street for local shops, bars & restaurants.

Offered unfurnished. Available late July/early August.
Wandsworth borough - Council tax band F
5 week security deposit required



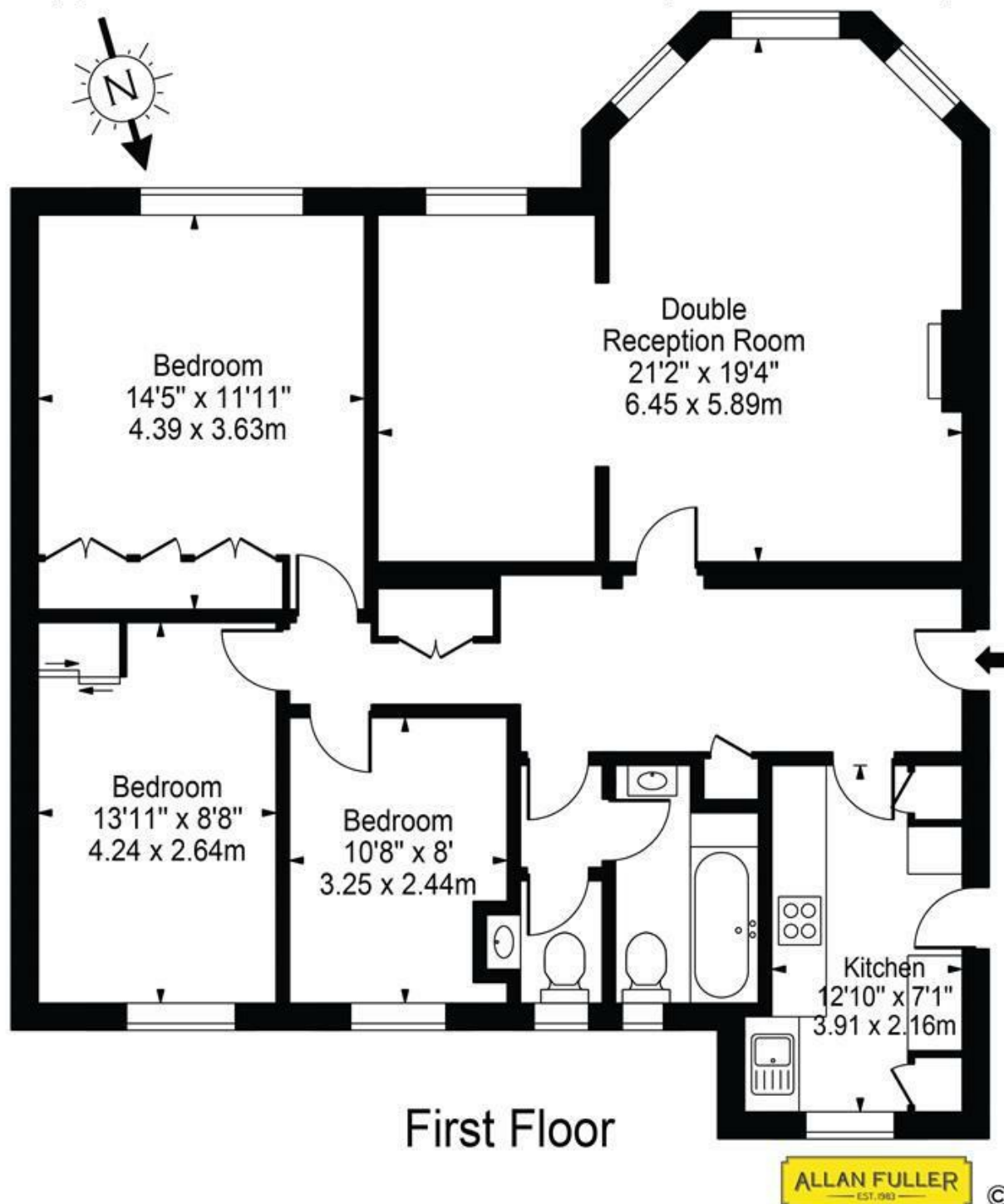
£3,200 PCM





Selwyn House, SW15

Approx. Gross Internal Area 1088 Sq Ft - 101.08 Sq M



For Illustration Purposes Only - Not To Scale Floor Plan by Mira Nikolova Photography

This floor plan should be used as a general outline for guidance only and does not constitute in whole or in part an offer or contract. Any intending purchaser or lessee should satisfy themselves by inspection, searches, enquiries and full survey as to the correctness of each statement. Any areas, measurements or distances quoted are approximate and should not be used to value a property or be the basis of any sale or let.

With regards to any information supplied by us in relation to lease, ground rent and service charge it is essential that you have this information checked by your solicitor. We have transmitted information supplied to us by the vendor of the property but we have not been able to inspect the lease to check its accuracy. Please note that we have not tested any of the equipment or utilities at this property, nothing in these particulars shall be deemed a statement that the property is in good condition or otherwise nor that any of the services or facilities are in good working order. Measurements are approximate they were taken with a sonic tape, are as accurate as possible and usually measured from the widest point of any room. Description provided herein represents the opinion of the author, is given in good faith but should not be constructed as statements of fact. The particulars and photograph are for guidance only.