

ALLAN FULLER
— EST. 1983 —

149 Upper Richmond Road, Putney, London, SW15 2TX

t: 020 8788 8822

e: putney@allanfuller.co.uk

www.allanfuller.co.uk

Huntingfield Road London, SW15

Work from home? This beautifully presented two double-bedroom home features a modern, multi-functional garden studio equipped with power, heating and wi-fi, making it ideal for a number of uses. The well-maintained garden extends nearly 20m, providing a serene outdoor space.

The current owners have recently enhanced the home with a high-quality kitchen in the rear extension and a luxurious travertine-tiled bathroom with underfloor heating. Both double bedrooms have built-in wardrobes maximising storage space, making this a great place to simply move straight into and enjoy living there!

The Dover House Conservation Area is renowned for its picturesque cottage-style housing influenced by the Arts and Crafts style, originally built for soldiers returning from WW1. The area's well-preserved historic character and unique architectural charm have made it increasingly desirable for homebuyers.

Situated in this popular residential area, Huntingfield Road offers easy access to local shops and amenities including Barnes Station, Putney Heath, and Richmond Park, and is a short stroll through tree-lined West Putney towards Putney High Street, giving access to both underground and mainline stations.

EPC - C Wandsworth Council Tax Band D



£750,000

Freehold






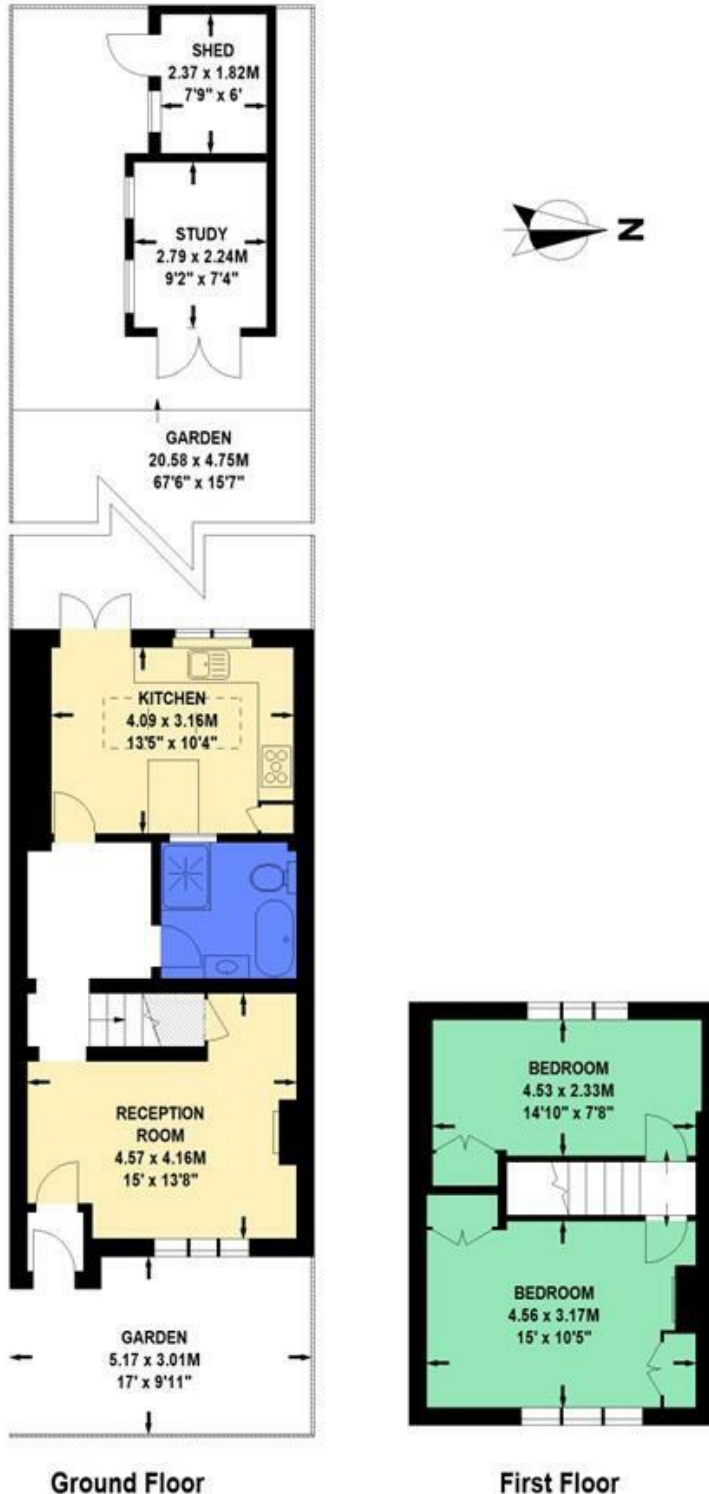
Huntingfield Road, SW15

Approximate Gross Internal Area 74 sq.m / 797 sq.ft

Excluding Study of Approximately 6 sq.m / 65 sq.ft

Excluding Shed of Approximately 4 sq.m / 43 sq.ft

 Under 1.5m head height



Floor Plan produced for Allan Fuller by Mays Floorplans © . Tel 020 3397 4594
Illustration for identification purposes only, not to scale
All measurements are maximum, and include wardrobes and window bays where applicable

With regards to any information supplied by us in relation to lease, ground rent and service charge it is essential that you have this information checked by your solicitor. We have transmitted information supplied to us by the vendor of the property but we have not been able to inspect the lease to check its accuracy. Please note that we have not tested any of the equipment or utilities at this property, nothing in these particulars shall be deemed a statement that the property is in good condition or otherwise nor that any of the services or facilities are in good working order. Measurements are approximate they were taken with a sonic tape, are as accurate as possible and usually measured from the widest point of any room. Description provided herein represents the opinion of the author, is given in good faith but should not be constructed as statements of fact. The particulars and photograph are for guidance only.