

**ALLAN FULLER**  
— EST. 1983 —

149 Upper Richmond Road, Putney, London, SW15 2TX

t: 020 8788 8822

e: putney@allanfuller.co.uk

www.allanfuller.co.uk

## Upper Richmond Road London, SW15

A well presented one bedroom apartment set in this well maintained building in Putney.

This superb home has it's own private access and comprises of a light and spacious living room, modern fitted kitchen with integrated appliances, generous double bedroom, additional storage cupboard and bathroom. There is also direct access to a lovely, large communal garden. Parking is also available on a first come, first served basis at the front of the property.

Enviably located within easy reach of Putney High Street which gives the occupier a choice of shops, bars and restaurants not forgetting both train and underground stations.

Available part furnished from 19th August

Wandsworth council tax band D

5 week security deposit required

EPC rating D



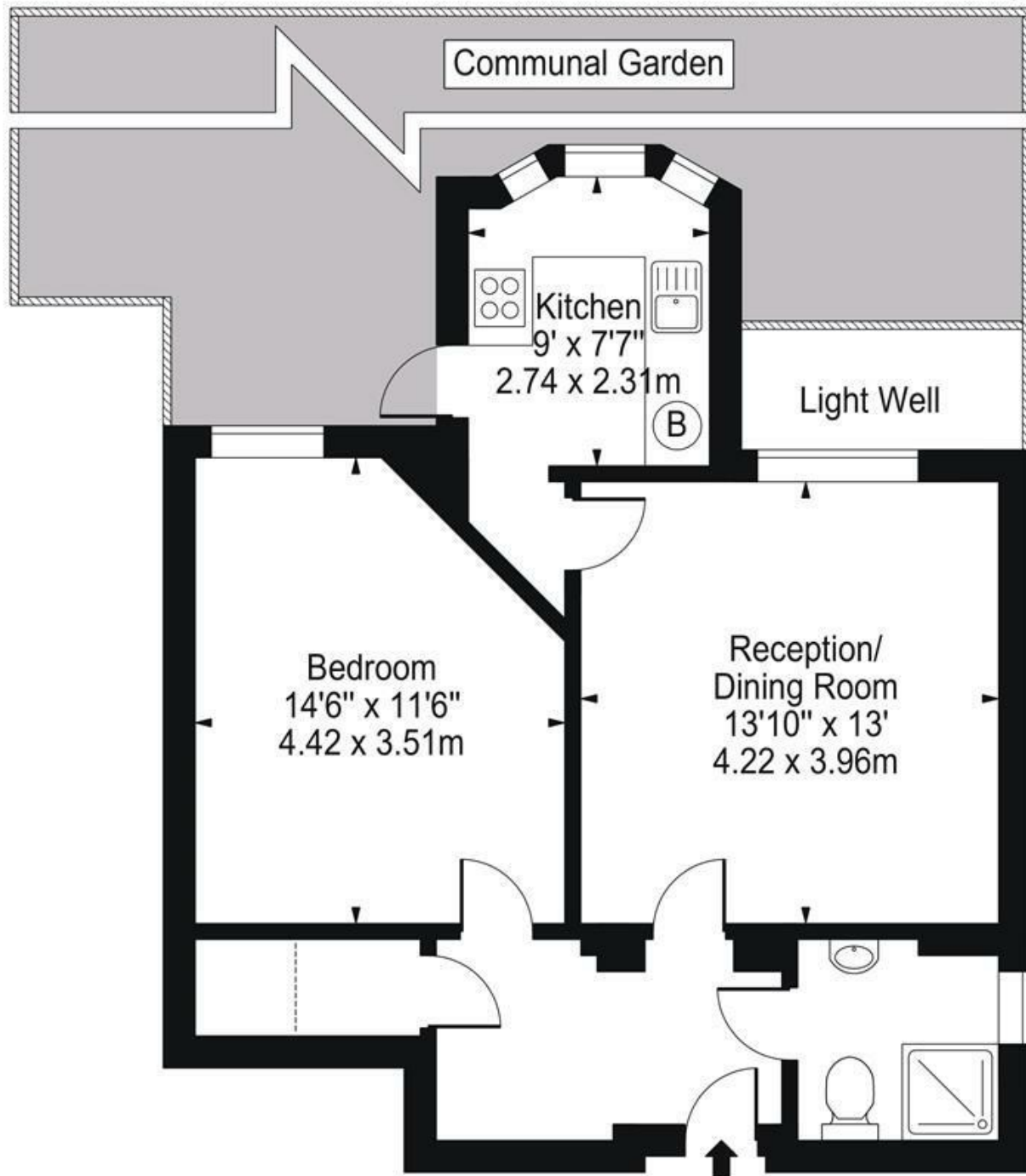
**£1,750 PCM**





# Upper Richmond Road, SW15 6SU

Approx. Gross Internal Area 560 Sq Ft - 52.03 Sq M



Ground Floor

For Illustration Purposes Only - Not To Scale Floor Plan by Mira Nikolova Photography

This floor plan should be used as a general outline for guidance only and does not constitute in whole or in part an offer or contract. Any intending purchaser or lessee should satisfy themselves by inspection, searches, enquiries and full survey as to the correctness of each statement. Any areas, measurements or distances quoted are approximate and should not be used to value a property or be the basis of any sale or let.

With regards to any information supplied by us in relation to lease, ground rent and service charge it is essential that you have this information checked by your solicitor. We have transmitted information supplied to us by the vendor of the property but we have not been able to inspect the lease to check its accuracy. Please note that we have not tested any of the equipment or utilities at this property, nothing in these particulars shall be deemed a statement that the property is in good condition or otherwise nor that any of the services or facilities are in good working order. Measurements are approximate they were taken with a sonic tape, are as accurate as possible and usually measured from the widest point of any room. Description provided herein represents the opinion of the author, is given in good faith but should not be constructed as statements of fact. The particulars and photograph are for guidance only.