



149 Upper Richmond Road, Putney, London, SW15 2TX

t: 020 8788 8822

e: putney@allanfuller.co.uk

www.allanfuller.co.uk

## Kersfield Road London, SW15

Stunning & truly spacious, 2 double bedroom, split level apartment. This lovely home is arranged with first floor entrance to double reception room with original parquet flooring with views over the gardens, sleek separate, fully fitted kitchen. To the second floor, two very generous double bedrooms with wood flooring, offering very good storage and a contemporary, fully tiled shower room.

Heath Royal is located just off Kersfield Road/Putney Hill and therefore within easy reach of Putney High Street, Putney train station and East Putney tube station (District Line) which are within walking distance and there are numerous bus links immediately accessible from Putney Hill, for easy access to Putney, Wimbledon Village, Fulham and beyond.

EPC - E Wandsworth Council Tax Band D



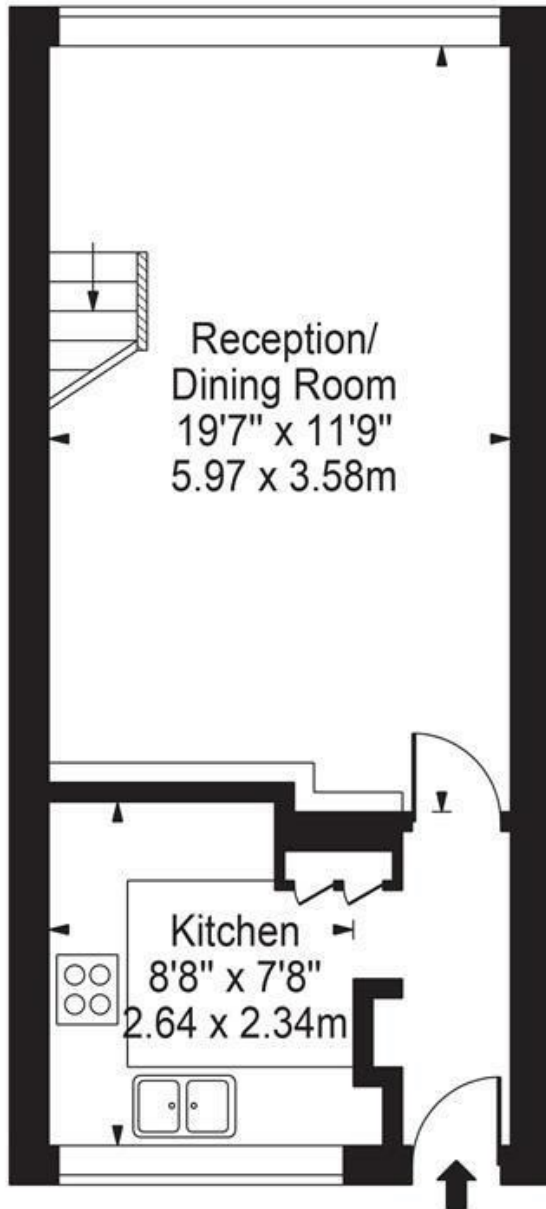
**Offers In Excess Of £475,000**



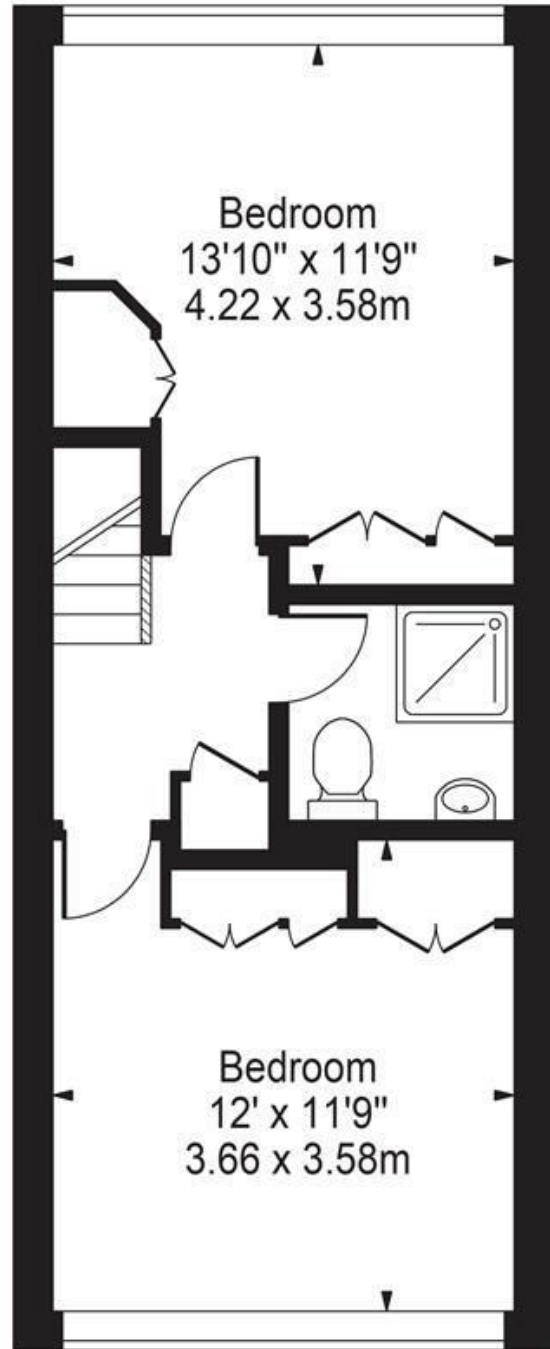


# Heath Royal, SW15

Approx. Gross Internal Area 708 Sq Ft - 65.78 Sq M



First Floor



Second Floor

For Illustration Purposes Only - Not To Scale Floor Plan by Mira Nikolova Photography

This floor plan should be used as a general outline for guidance only and does not constitute in whole or in part an offer or contract. Any intending purchaser or lessee should satisfy themselves by inspection, searches, enquiries and full survey as to the correctness of each statement. Any areas, measurements or distances quoted are approximate and should not be used to value a property or be the basis of any sale or let.

With regards to any information supplied by us in relation to lease, ground rent and service charge it is essential that you have this information checked by your solicitor. We have transmitted information supplied to us by the vendor of the property but we have not been able to inspect the lease to check its accuracy. Please note that we have not tested any of the equipment or utilities at this property, nothing in these particulars shall be deemed a statement that the property is in good condition or otherwise nor that any of the services or facilities are in good working order. Measurements are approximate they were taken with a sonic tape, are as accurate as possible and usually measured from the widest point of any room. Description provided herein represents the opinion of the author, is given in good faith but should not be constructed as statements of fact. The particulars and photograph are for guidance only.