



149 Upper Richmond Road, Putney, London, SW15 2TX

t: 020 8788 8822

e: putney@allanfuller.co.uk

www.allanfuller.co.uk

Gipsy Lane London, SW15

A truly spacious one bedroom apartment to rent, with an abundance of storage throughout. The property benefits from a larger than average reception room with dining area and doors directly onto a balcony, separate eat in kitchen and a large double bedroom with ample built-in wardrobes and a bathroom with shower over the bath.

This apartment is located on the second floor of this private development with the benefit of a lift and is within easy reach of Barnes Mainline Station providing easy access into Clapham Junction, Vauxhall and Waterloo. Putney High Street is a short bus ride away with its array of restaurants, bars and shopping facilities.

Offered part furnished, available early September

EPC rating C

Richmond Council Tax Band D

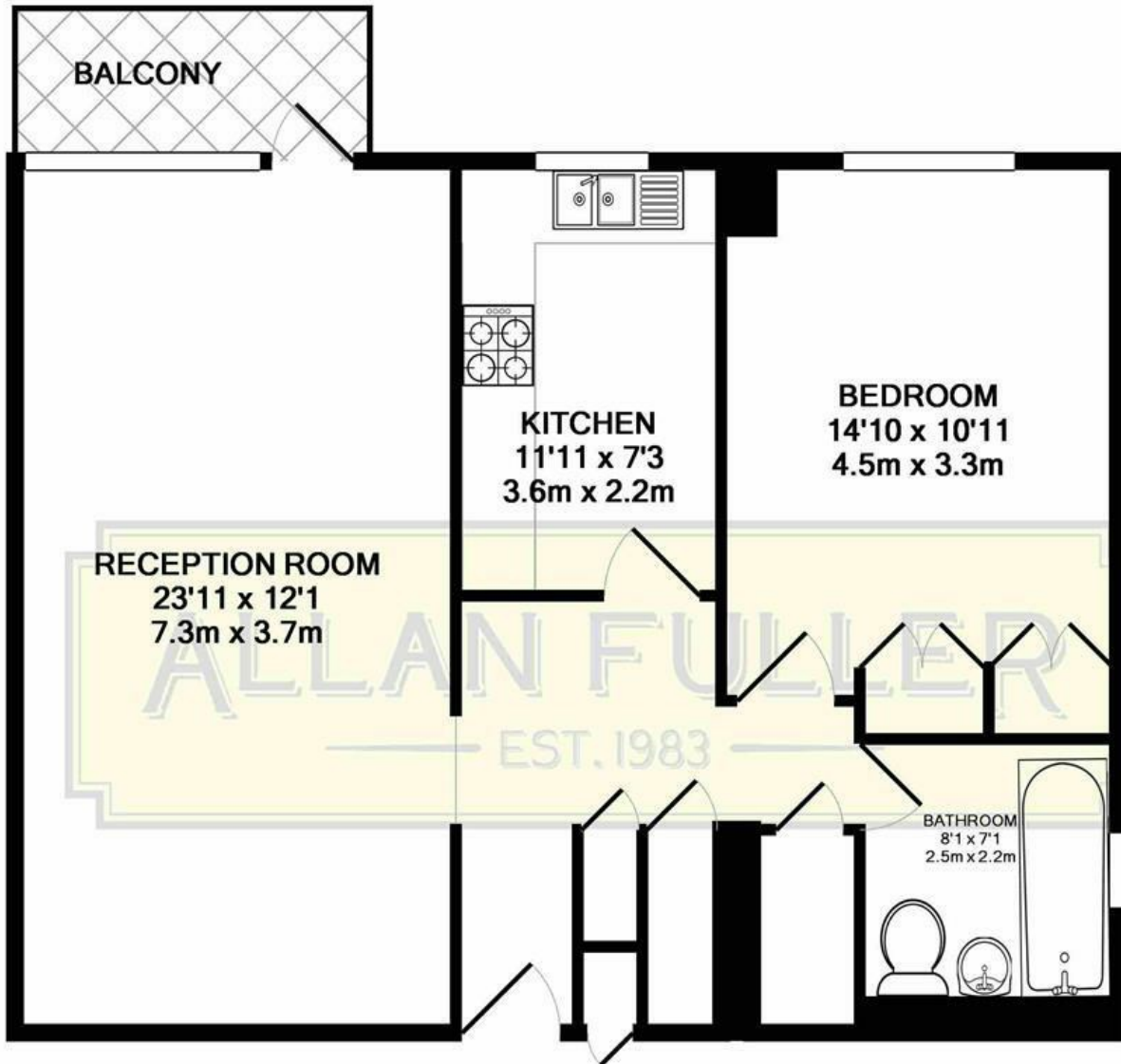
5 week security deposit required



£1,900 Per Month







GIPSY LANE, SW15
 TOTAL APPROX. FLOOR AREA 797 SQ.FT. (74.0 SQ.M.)



Whilst every attempt has been made to ensure the accuracy of the floor plan contained here, measurements of doors, windows, rooms and any other items are approximate and no responsibility is taken for any error, omission, or mis-statement. This plan is for illustrative purposes only and should be used as such by any prospective purchaser. The services, systems and appliances shown have not been tested and no guarantee as to their operability or efficiency can be given
 Made with Metropix ©2018

With regards to any information supplied by us in relation to lease, ground rent and service charge it is essential that you have this information checked by your solicitor. We have transmitted information supplied to us by the vendor of the property but we have not been able to inspect the lease to check its accuracy. Please note that we have not tested any of the equipment or utilities at this property, nothing in these particulars shall be deemed a statement that the property is in good condition or otherwise nor that any of the services or facilities are in good working order. Measurements are approximate they were taken with a sonic tape, are as accurate as possible and usually measured from the widest point of any room. Description provided herein represents the opinion of the author, is given in good faith but should not be constructed as statements of fact. The particulars and photograph are for guidance only.