

ALLAN FULLER
— EST. 1983 —

149 Upper Richmond Road, Putney, London, SW15 2TX

t: 020 8788 8822

e: putney@allanfuller.co.uk

www.allanfuller.co.uk

Portinscale Road London, SW15

An enviably located, and huge, one bedroom apartment, boasting truly bright accommodation, offering a large front facing reception room, benefiting from new floor to ceiling windows, generous bedroom with built-in storage, a modern fully fitted kitchen and bathroom.

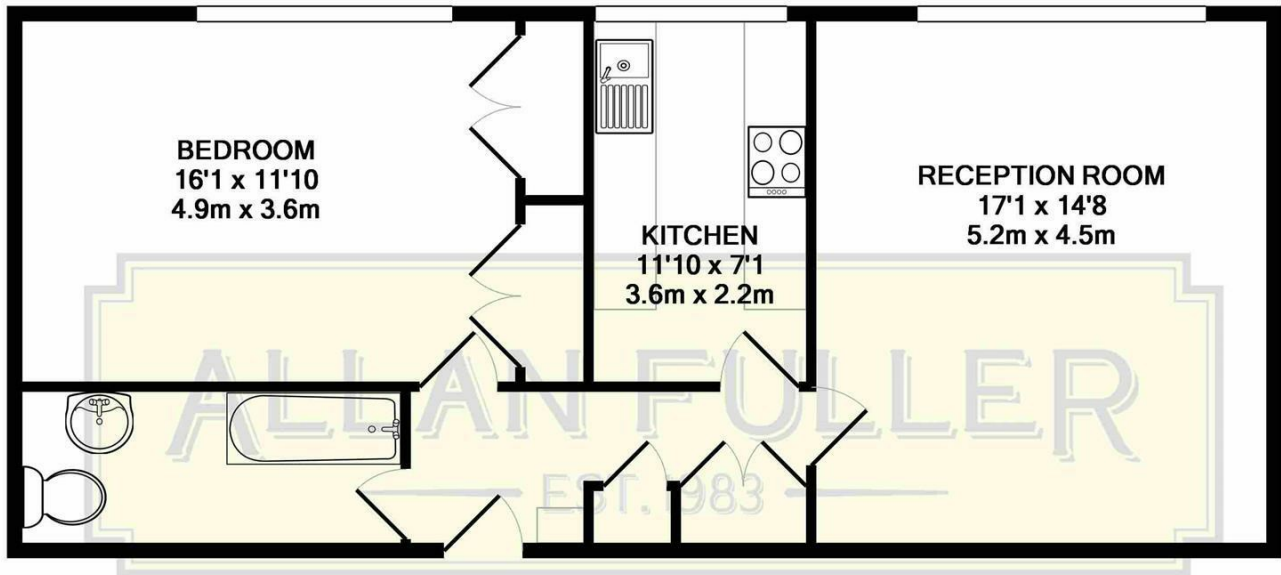
Burton Lodge also has the added advantage of beautifully maintained communal gardens to the rear as well as being conveniently positioned to allow effortless access to the local shopping facilities of Waitrose, Sainsburys, Co-Op, Majestic Wine and the bars and restaurants in Putney High Street. Excellent transport at Putney Mainline Station, 18 minutes to London Waterloo and 29 minutes from East Putney Underground Station to Oxford Circus (District Line).



Asking Price £325,000
Leasehold







PORTINSCALE ROAD, SW15
TOTAL APPROX. FLOOR AREA 682 SQ.FT. (63.4 SQ.M.)

Whilst every attempt has been made to ensure the accuracy of the floor plan contained here, measurements of doors, windows, rooms and any other items are approximate and no responsibility is taken for any error, omission, or mis-statement. This plan is for illustrative purposes only and should be used as such by any prospective purchaser. The services, systems and appliances shown have not been tested and no guarantee as to their operability or efficiency can be given

Made with Metropix ©2018



With regards to any information supplied by us in relation to lease, ground rent and service charge it is essential that you have this information checked by your solicitor. We have transmitted information supplied to us by the vendor of the property but we have not been able to inspect the lease to check its accuracy. Please note that we have not tested any of the equipment or utilities at this property, nothing in these particulars shall be deemed a statement that the property is in good condition or otherwise nor that any of the services or facilities are in good working order. Measurements are approximate they were taken with a sonic tape, are as accurate as possible and usually measured from the widest point of any room. Description provided herein represents the opinion of the author, is given in good faith but should not be constructed as statements of fact. The particulars and photograph are for guidance only.