

ALLAN FULLER
— EST. 1983 —

149 Upper Richmond Road, Putney, London, SW15 2TX

t: 020 8788 8822

e: putney@allanfuller.co.uk

www.allanfuller.co.uk

Rayners Road London, SW15

A charming terraced house that boasts three bedrooms, one reception room, one bathroom and an additional downstairs WC. This property is perfect for those seeking a comfortable and spacious living space in a desirable location.

The property is in excellent condition. The downstairs is open plan with a spacious reception room leading onto the modern kitchen and doors out to a beautiful private garden. With three bedrooms upstairs, there is plenty of space for a growing family or for those in need of a home office or guest room. Further benefits include built in storage throughout and a well maintained garage.

Located in a sought-after area, this house on Rayners Road offers the perfect blend of comfort, convenience, and style. Don't miss out on the opportunity to make this lovely property your new home.

Council tax band F - Wandsworth borough
5 week security deposit required



£3,500 Per Month

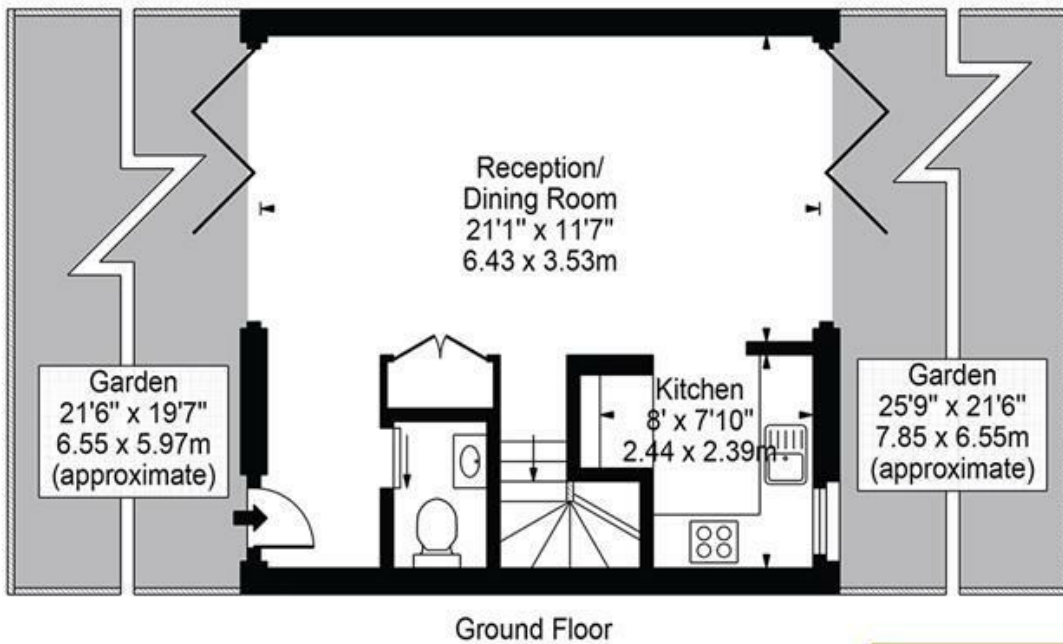
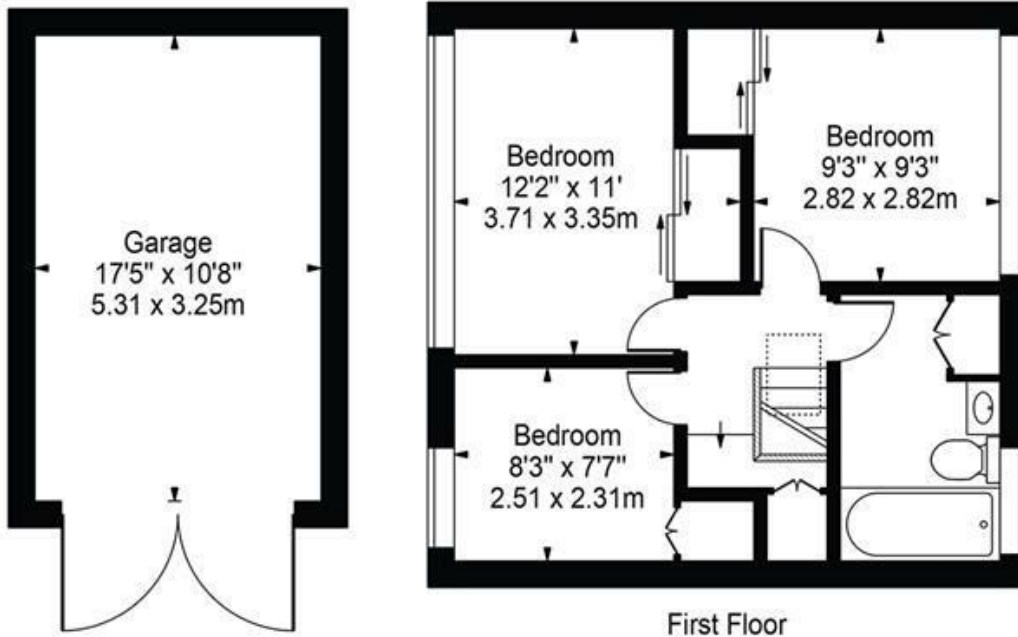




Rayners Road, SW15

Approx. Gross Internal Area 826 Sq Ft - 76.74 Sq M
(Excluding Garage)

Approx. Gross Internal Area Of Garage 186 Sq Ft - 17.26 Sq M



For Illustration Purposes Only - Not To Scale Floor Plan by Mira Nikolova Photography

This floor plan should be used as a general outline for guidance only and does not constitute in whole or in part an offer or contract. Any intending purchaser or lessee should satisfy themselves by inspection, searches, enquiries and full survey as to the correctness of each statement. Any areas, measurements or distances quoted are approximate and should not be used to value a property or be the basis of any sale or let.

With regards to any information supplied by us in relation to lease, ground rent and service charge it is essential that you have this information checked by your solicitor. We have transmitted information supplied to us by the vendor of the property but we have not been able to inspect the lease to check its accuracy. Please note that we have not tested any of the equipment or utilities at this property, nothing in these particulars shall be deemed a statement that the property is in good condition or otherwise nor that any of the services or facilities are in good working order. Measurements are approximate they were taken with a sonic tape, are as accurate as possible and usually measured from the widest point of any room. Description provided herein represents the opinion of the author, is given in good faith but should not be constructed as statements of fact. The particulars and photograph are for guidance only.