



149 Upper Richmond Road, Putney, London, SW15 2TX

t: 020 8788 8822

e: putney@allanfuller.co.uk

www.allanfuller.co.uk

Cotman Close London, SW15

Truly spacious and contemporary, 2 double bedroom apartment, set in this private gated development. Our home comprises a good sized reception room, with space to dine, benefiting from lovely parquet flooring and picture windows, two double bedrooms, sleek fully fitted kitchen and a shower room, also offers the bonus of a utility room. The building enjoys a lift and communal gardens at the rear.

Cotman Close is located on Westleigh Avenue, just off Putney Hill, within easy walking distance to Putney High Street with its array of excellent shopping facilities, bars and restaurants and the transport links of Putney Mainline Station to Clapham Junction, Vauxhall and London Waterloo, with East Putney Underground Station (District Line) further along the Upper Richmond Road.

Available furnished from the 10th of June

EPC Rating C

Wandsworth Council Tax Band D



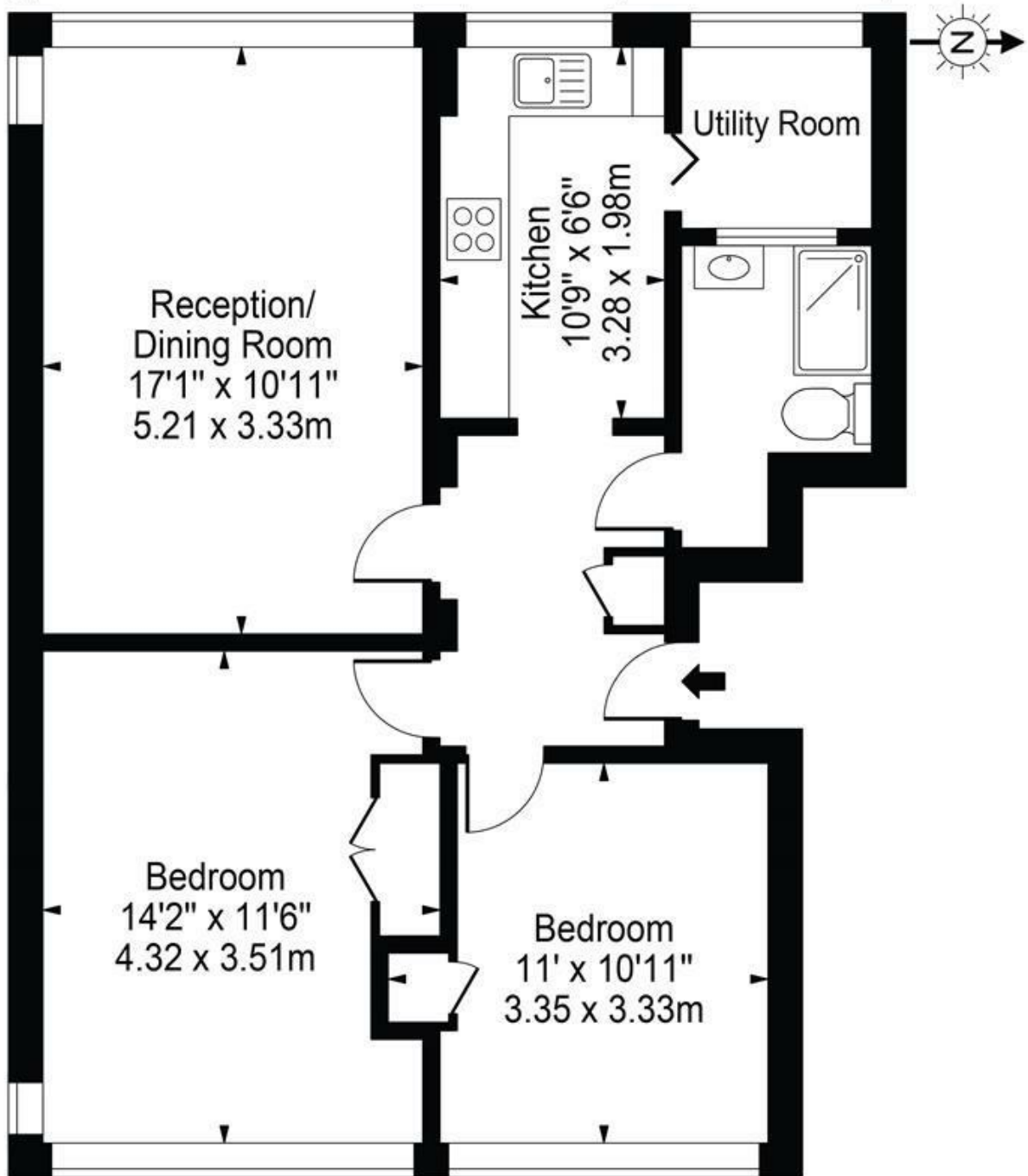
£2,100





Cotman Close, SW15

Approx. Gross Internal Area 683 Sq Ft - 63.45 Sq M



First Floor

ALLAN FULLER
EST. 1983

©

For Illustration Purposes Only - Not To Scale Floor Plan by Mira Nikolova Photography

This floor plan should be used as a general outline for guidance only and does not constitute in whole or in part an offer or contract. Any intending purchaser or lessee should satisfy themselves by inspection, searches, enquiries and full survey as to the correctness of each statement. Any areas, measurements or distances quoted are approximate and should not be used to value a property or be the basis of any sale or let.

With regards to any information supplied by us in relation to lease, ground rent and service charge it is essential that you have this information checked by your solicitor. We have transmitted information supplied to us by the vendor of the property but we have not been able to inspect the lease to check its accuracy. Please note that we have not tested any of the equipment or utilities at this property, nothing in these particulars shall be deemed a statement that the property is in good condition or otherwise nor that any of the services or facilities are in good working order. Measurements are approximate they were taken with a sonic tape, are as accurate as possible and usually measured from the widest point of any room. Description provided herein represents the opinion of the author, is given in good faith but should not be constructed as statements of fact. The particulars and photographs are for guidance only.