

ALLAN FULLER
— EST. 1983 —

149 Upper Richmond Road, Putney, London, SW15 2TX

t: 020 8788 8822

e: putney@allanfuller.co.uk

www.allanfuller.co.uk

78 Wimbledon Park Side London, SW19

This generous three-bedroom apartment, nestled at the rear of a charming 1930s Art Deco development, offers stunning views of the beautifully maintained communal gardens. The property boasts a spacious reception room and three well-proportioned bedrooms. Residents benefit from porterage services, well-lit communal gardens, and driveways equipped with 24-hour CCTV monitoring.

Perfectly located just a stone's throw from Wimbledon Common and Putney Heath, and a short stroll from the vibrant Wimbledon Village, which is brimming with boutique shops, bars, and restaurants, this flat is ideally situated. Additionally, it offers off-street parking, a sunny communal garden, and is within close proximity to both Southfields tube station and Wimbledon Mainline Station, making it an excellent place to call home. The apartment is offered unfurnished.

EPC - C

Wandsworth Council Tax Band E



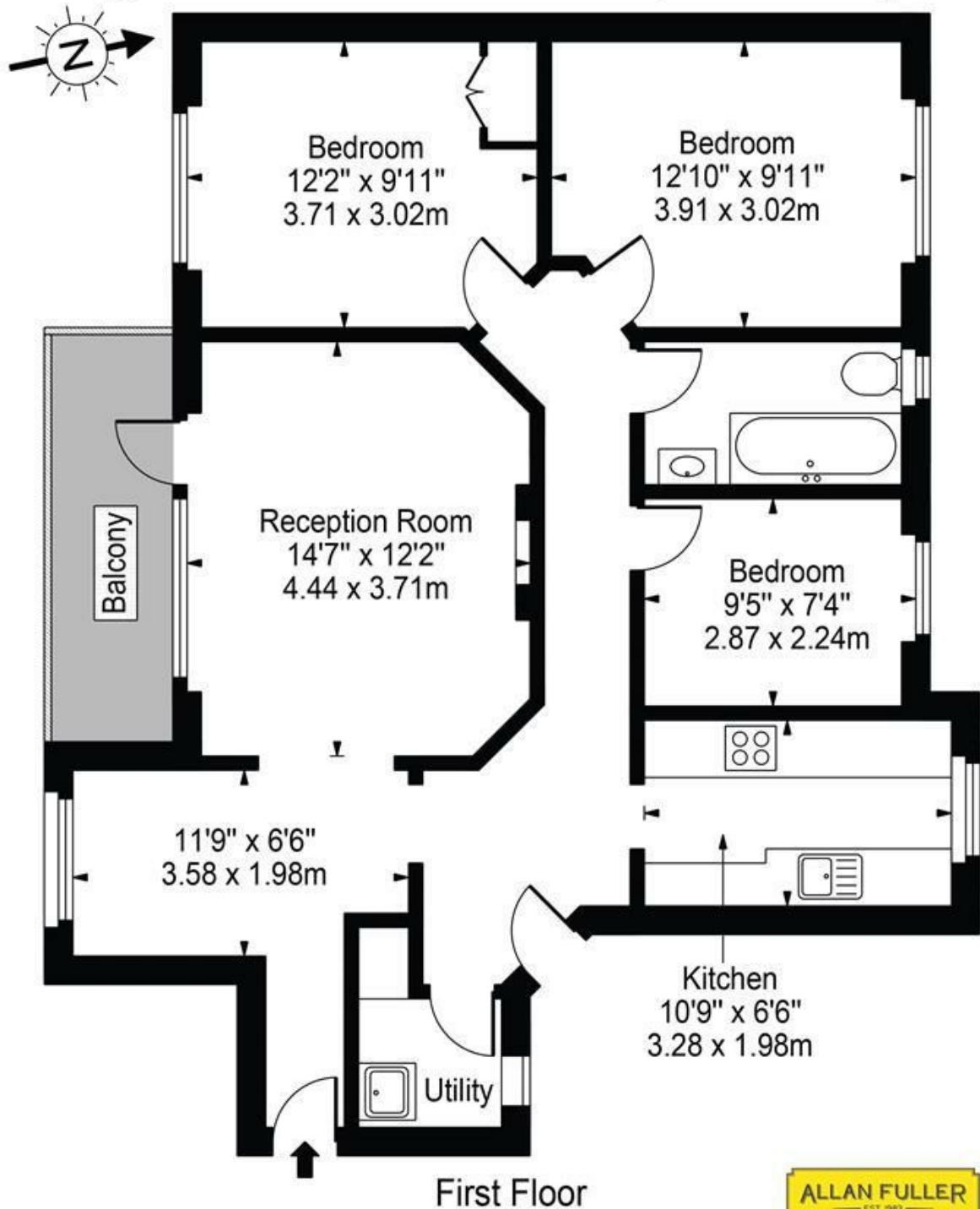
£2,500 Per Month





Chilveston, SW19

Approx. Gross Internal Area 866 Sq Ft - 80.45 Sq M



For Illustration Purposes Only - Not To Scale Floor Plan by Mira Nikolova Photography

This floor plan should be used as a general outline for guidance only and does not constitute in whole or in part an offer or contract. Any intending purchaser or lessee should satisfy themselves by inspection, searches, enquiries and full survey as to the correctness of each statement. Any areas, measurements or distances quoted are approximate and should not be used to value a property or be the basis of any sale or let.

With regards to any information supplied by us in relation to lease, ground rent and service charge it is essential that you have this information checked by your solicitor. We have transmitted information supplied to us by the vendor of the property but we have not been able to inspect the lease to check its accuracy. Please note that we have not tested any of the equipment or utilities at this property, nothing in these particulars shall be deemed a statement that the property is in good condition or otherwise nor that any of the services or facilities are in good working order. Measurements are approximate they were taken with a sonic tape, are as accurate as possible and usually measured from the widest point of any room. Description provided herein represents the opinion of the author, is given in good faith but should not be constructed as statements of fact. The particulars and photographs are for guidance only.