



149 Upper Richmond Road, Putney, London, SW15 2TX

t: 020 8788 8822

e: putney@allanfuller.co.uk

www.allanfuller.co.uk

Keswick Road London, SW15

A fantastically located studio apartment, set within this very well maintained building. This home enjoys a perfectly formed living space with doors onto a balcony, with ample storage, separate fitted kitchen and bathroom with shower connection. An added advantage, is access to a perfectly kept communal garden to the rear of the building. Perfect for single occupancy.

Keswick Road is an ideally located moments away from East Putney Underground Station (District Line) with its array of excellent local shopping facilities of Waitrose, Sainsburys, Co-op and with Putney High Street providing easy access to Putney Mainline Station.

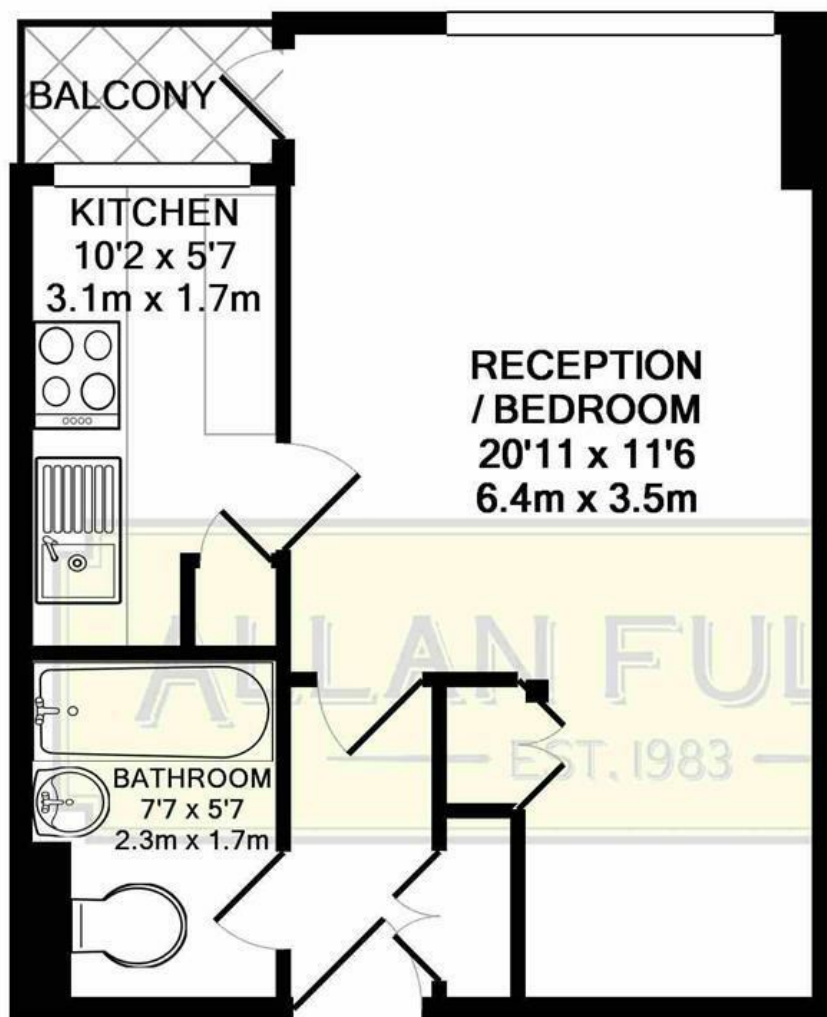
Available June, offered unfurnished.
5 week security deposit required
Council tax band B Wandsworth borough
EPC rating E



£1,365 PCM







KESWICK ROAD, SW15
 TOTAL APPROX. FLOOR AREA 377 SQ.FT. (35.0 SQ.M.)

Whilst every attempt has been made to ensure the accuracy of the floor plan contained here, measurements of doors, windows, rooms and any other items are approximate and no responsibility is taken for any error, omission, or mis-statement. This plan is for illustrative purposes only and should be used as such by any prospective purchaser. The services, systems and appliances shown have not been tested and no guarantee as to their operability or efficiency can be given

Made with Metropix ©2018

With regards to any information supplied by us in relation to lease, ground rent and service charge it is essential that you have this information checked by your solicitor. We have transmitted information supplied to us by the vendor of the property but we have not been able to inspect the lease to check its accuracy. Please note that we have not tested any of the equipment or utilities at this property, nothing in these particulars shall be deemed a statement that the property is in good condition or otherwise nor that any of the services or facilities are in good working order. Measurements are approximate they were taken with a sonic tape, are as accurate as possible and usually measured from the widest point of any room. Description provided herein represents the opinion of the author, is given in good faith but should not be constructed as statements of fact. The particulars and photograph are for guidance only.