

ALLAN FULLER
— EST. 1983 —

149 Upper Richmond Road, Putney, London, SW15 2TX

t: 020 8788 8822

e: putney@allanfuller.co.uk

www.allanfuller.co.uk

Dover House Road London, SW15

This mid-terrace three bedroom property is situated in the increasingly popular Dover House Conservation Area. The layout was inspired by the Garden City Movement and evokes all the qualities of the town in the country. The common characteristic of the cottage estates is picturesque housing influenced by the Arts and Crafts style originally built for soldiers returning from WW1.

Situated in this popular residential area offers easy access to local shops and amenities including Barnes Station, Putney Heath and is a short stroll through tree lined West Putney towards Putney High Street, giving access to both underground and over-ground stations.
EPC-C Wandsworth Council Tax Band D



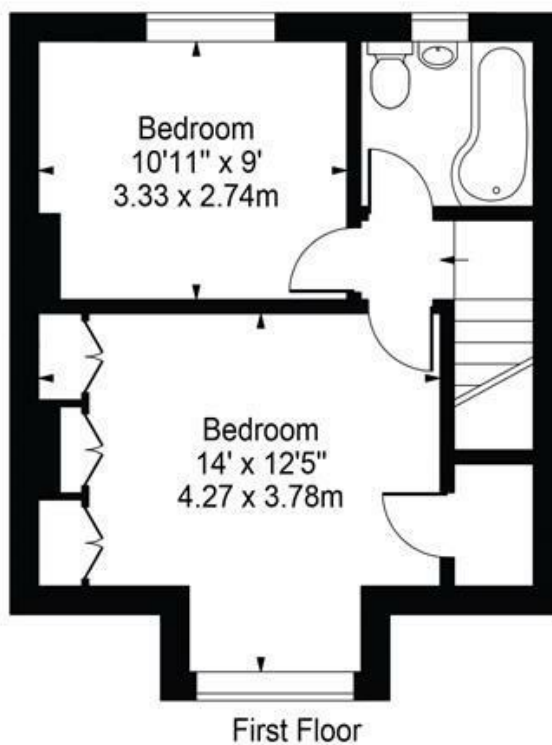
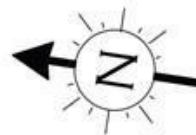
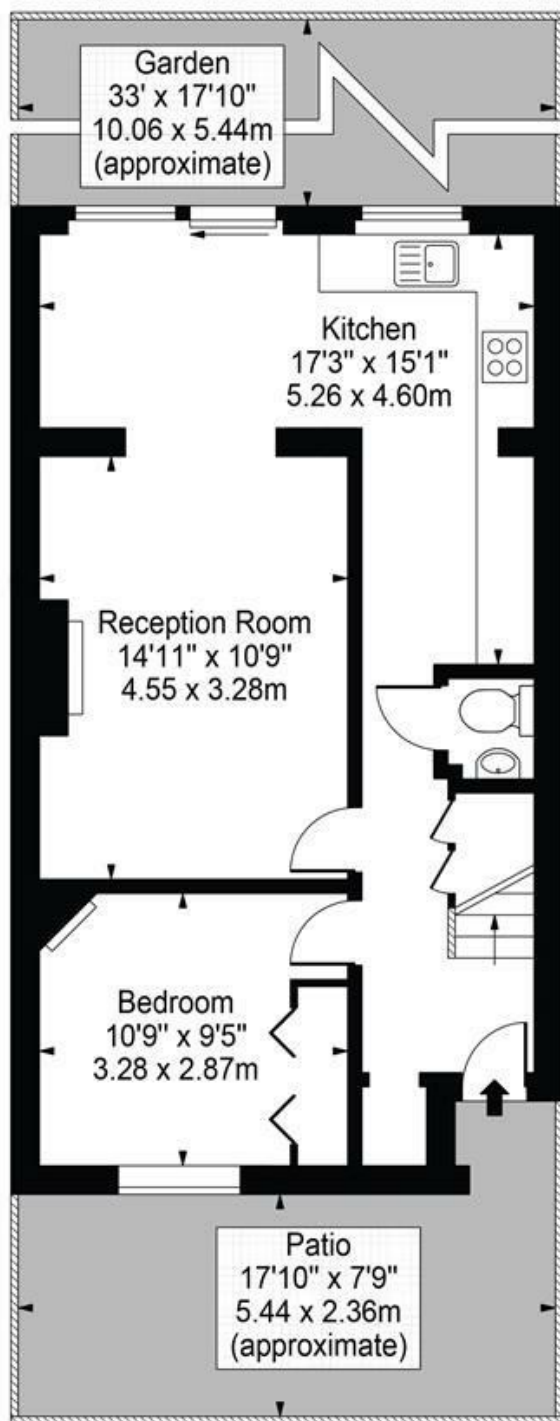
Asking Price £700,000
Freehold





Dover House Road, SW15

Approx. Gross Internal Area 902 Sq Ft - 83.80 Sq M



Ground Floor

First Floor



For Illustration Purposes Only - Not To Scale Floor Plan by Mira Nikolova Photography

This floor plan should be used as a general outline for guidance only and does not constitute in whole or in part an offer or contract. Any intending purchaser or lessee should satisfy themselves by inspection, searches, enquiries and full survey as to the correctness of each statement. Any areas, measurements or distances quoted are approximate and should not be used to value a property or be the basis of any sale or let.

With regards to any information supplied by us in relation to lease, ground rent and service charge it is essential that you have this information checked by your solicitor. We have transmitted information supplied to us by the vendor of the property but we have not been able to inspect the lease to check its accuracy. Please note that we have not tested any of the equipment or utilities at this property, nothing in these particulars shall be deemed a statement that the property is in good condition or otherwise nor that any of the services or facilities are in good working order. Measurements are approximate they were taken with a sonic tape, are as accurate as possible and usually measured from the widest point of any room. Description provided herein represents the opinion of the author, is given in good faith but should not be constructed as statements of fact. The particulars and photograph are for guidance only.