

ALLAN FULLER
— EST. 1983 —

149 Upper Richmond Road, Putney, London, SW15 2TX

t: 020 8788 8822

e: putney@allanfuller.co.uk

www.allanfuller.co.uk

Selwyn House London, SW15

An elegant two double bedroom apartment set within this prestigious development with the benefit of large communal gardens, resident caretaker, 24-hour security and off street parking.

The flat is extremely well presented with a spacious entrance hall, large reception room and kitchen. Situated at the rear of the development, the property offers peace, tranquility and convenience. Benefits from double glazing throughout and offers third-floor views of the gardens as well as across London.

Located just off lovely Putney Heath, there is easy access to all of Putney's fashionable shops, bars and restaurants, as well as terrific transport links, and the River Thames is just a short walk away.

Manor Fields was built in the 1930s and was one of the most prestigious flat developments anywhere in the capital. Since then it has, if anything, become even more desirable with the immaculately kept grounds being the third largest private gardens in the London."

EPC- E Wandsworth Council Tax Band E



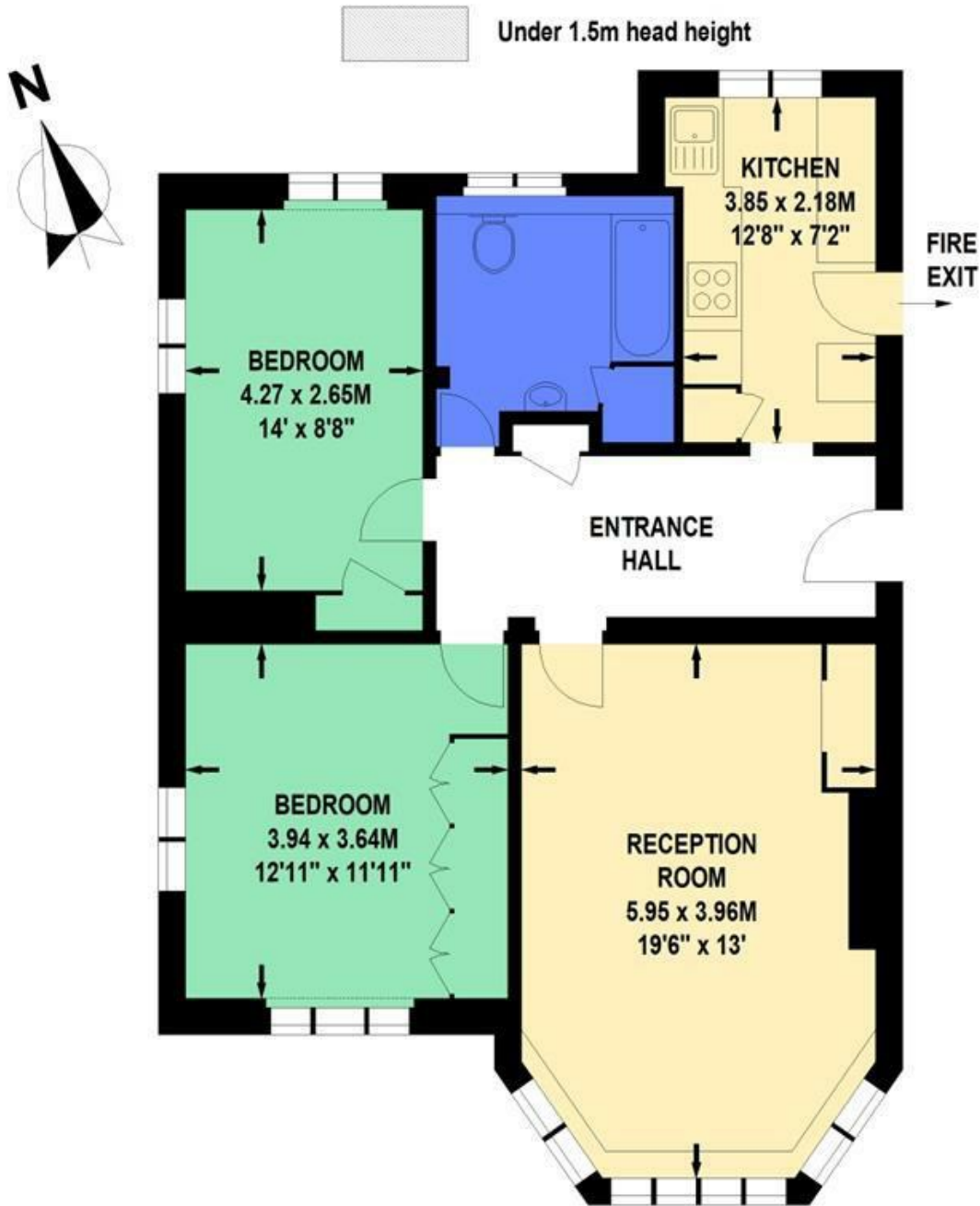
Asking Price £660,000
Leasehold





Selwyn House, Manor Fields, SW15

Approximate Gross Internal Area 78 sq.m / 840 sq.ft



Floor Plan produced for Allan Fuller by Mays Floorplans © . Tel 020 3397 4594

Illustration for identification purposes only, not to scale

All measurements are maximum, and include wardrobes and window bays where applicable

With regards to any information supplied by us in relation to lease, ground rent and service charge it is essential that you have this information checked by your solicitor. We have transmitted information supplied to us by the vendor of the property but we have not been able to inspect the lease to check its accuracy. Please note that we have not tested any of the equipment or utilities at this property, nothing in these particulars shall be deemed a statement that the property is in good condition or otherwise nor that any of the services or facilities are in good working order. Measurements are approximate they were taken with a sonic tape, are as accurate as possible and usually measured from the widest point of any room. Description provided herein represents the opinion of the author, is given in good faith but should not be constructed as statements of fact. The particulars and photograph are for guidance only.