

**ALLAN FULLER**  
— EST. 1983 —

149 Upper Richmond Road, Putney, London, SW15 2TX

t: 020 8788 8822

e: putney@allanfuller.co.uk

www.allanfuller.co.uk

## Kersfield Road London, SW15

This newly renovated two double bedroom purpose built flat, offers spacious and bright living accommodation with it's own private south facing balcony, there is an open-plan kitchen with a breakfast bar and two beautifully decorated bedrooms. There is a lift and communal gardens.

Located on Kersfield Road the property offers easy access to the array of shops, bars and restaurants on Putney High Street with Putney mainline and underground stations offering excellent access to Central London and beyond as well as the green open spaces of Putney Heath.

EPC - C Wandsworth Council Tax Band C



**£460,000**

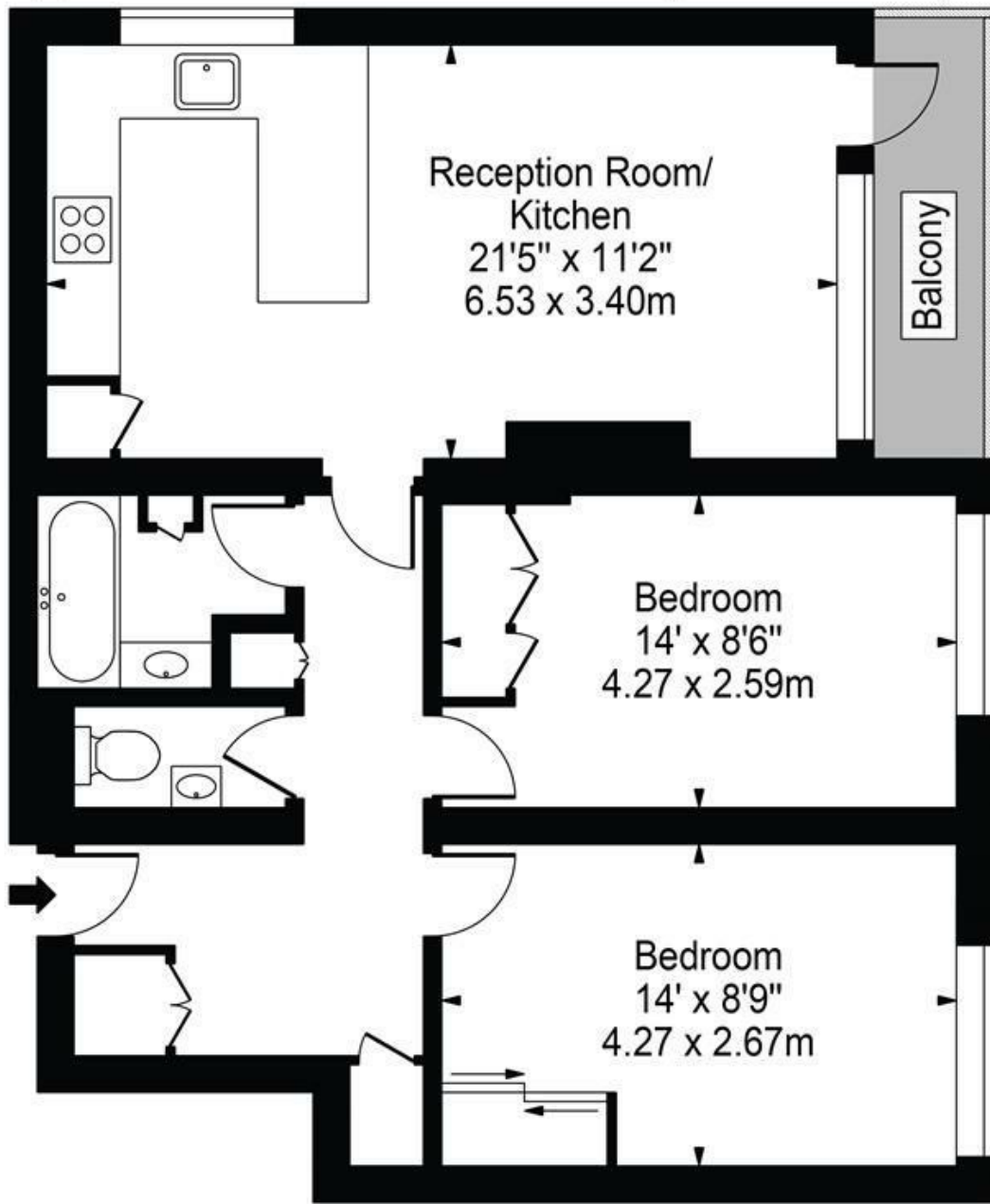
**Leasehold**





# Classinghall House, SW15

Approx. Gross Internal Area 684 Sq Ft - 63.55 Sq M



First Floor



©

For Illustration Purposes Only - Not To Scale Floor Plan by Mira Nikolova Photography

This floor plan should be used as a general outline for guidance only and does not constitute in whole or in part an offer or contract. Any intending purchaser or lessee should satisfy themselves by inspection, searches, enquiries and full survey as to the correctness of each statement. Any areas, measurements or distances quoted are approximate and should not be used to value a property or be the basis of any sale or let.

With regards to any information supplied by us in relation to lease, ground rent and service charge it is essential that you have this information checked by your solicitor. We have transmitted information supplied to us by the vendor of the property but we have not been able to inspect the lease to check its accuracy. Please note that we have not tested any of the equipment or utilities at this property, nothing in these particulars shall be deemed a statement that the property is in good condition or otherwise nor that any of the services or facilities are in good working order. Measurements are approximate they were taken with a sonic tape, are as accurate as possible and usually measured from the widest point of any room. Description provided herein represents the opinion of the author, is given in good faith but should not be constructed as statements of fact. The particulars and photograph are for guidance only.