

ALLAN FULLER
— EST. 1983 —

149 Upper Richmond Road, Putney, London, SW15 2TX

t: 020 8788 8822

e: putney@allanfuller.co.uk

www.allanfuller.co.uk

Keswick Road , SW15

A well presented, spacious and brilliantly located apartment positioned in the heart of Putney, just a stone's throw from East Putney tube station. This charming flat offers generous accommodation ideal for a first time buyer and comprises of a spacious lounge which opens onto a lovely balcony and overlooks the communal roof garden, a separate well equipped kitchen, double bedroom with inbuilt storage and well presented bathroom.

The building benefits from a porter, lift and bike store, the service charges include heating and hot water and Wandsworth Council Tax is amongst the lowest in London

Millbrooke Court is located on the Upper Richmond Road in East Putney and very close to Putney High Street, where there are good local shops and restaurants. East Putney underground (District) is moments from the property.

EPC - C Wandsworth Council Tax Band D



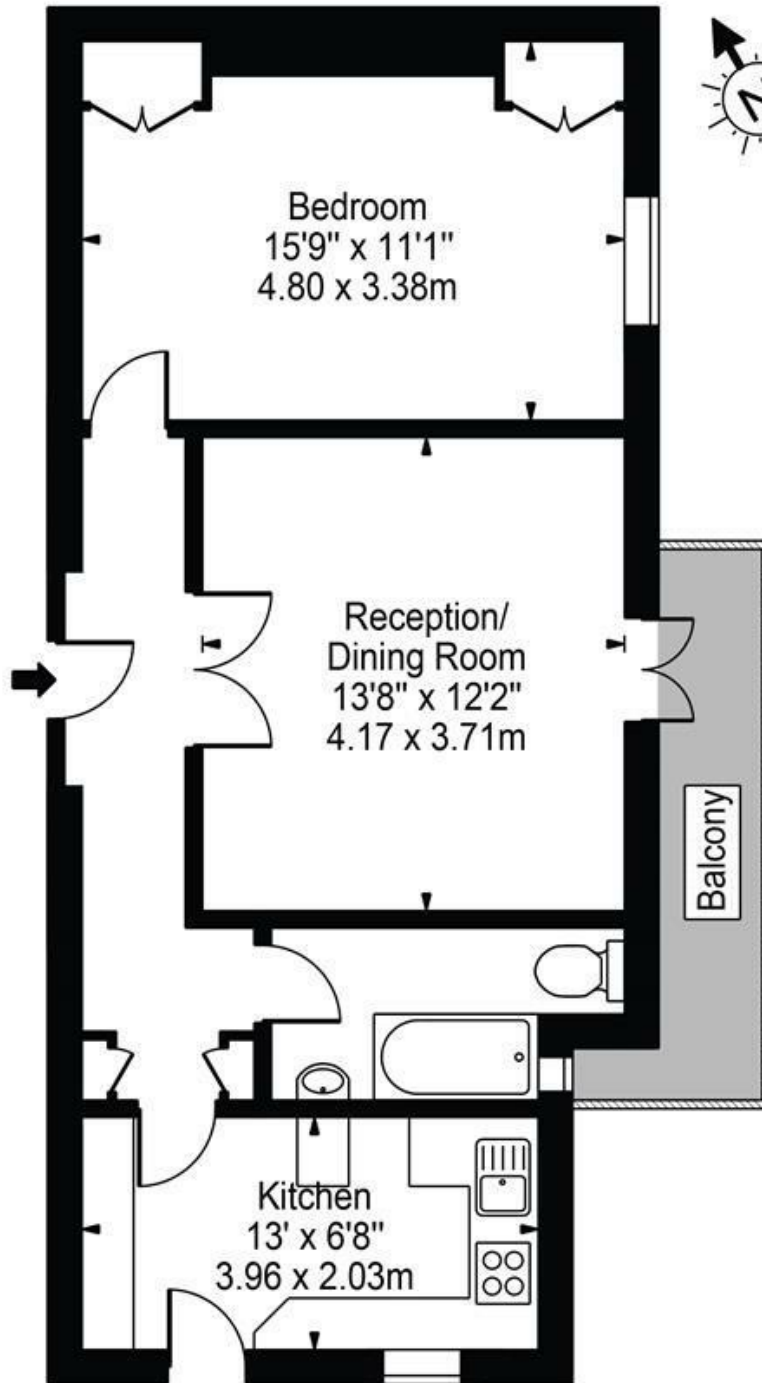
Asking Price £385,000
Leasehold





Millbrooke Court, SW15

Approx. Gross Internal Area 565 Sq Ft - 52.49 Sq M



Second Floor

For Illustration Purposes Only - Not To Scale Floor Plan by Mira Nikolova Photography

This floor plan should be used as a general outline for guidance only and does not constitute in whole or in part an offer or contract. Any intending purchaser or lessee should satisfy themselves by inspection, searches, enquiries and full survey as to the correctness of each statement. Any areas, measurements or distances quoted are approximate and should not be used to value a property or be the basis of any sale or let.

With regards to any information supplied by us in relation to lease, ground rent and service charge it is essential that you have this information checked by your solicitor. We have transmitted information supplied to us by the vendor of the property but we have not been able to inspect the lease to check its accuracy. Please note that we have not tested any of the equipment or utilities at this property, nothing in these particulars shall be deemed a statement that the property is in good condition or otherwise nor that any of the services or facilities are in good working order. Measurements are approximate they were taken with a sonic tape, are as accurate as possible and usually measured from the widest point of any room. Description provided herein represents the opinion of the author, is given in good faith but should not be constructed as statements of fact. The particulars and photograph are for guidance only.