

**ALLAN FULLER**  
— EST. 1983 —

149 Upper Richmond Road, Putney, London, SW15 2TX

t: 020 8788 8822

e: putney@allanfuller.co.uk

www.allanfuller.co.uk

## Dover House Road London, SW15

This three-bedroom house is an ideal haven for families or professional sharers and is located within the popular Dover House conservation area. It offers a fantastic open plan living room featuring warm wooden flooring and a well-appointed kitchen on the ground floor with access to a private garden and terrace at the front. Three bedrooms are located on the first floor accompanied by a spacious family bathroom.

The property is surrounded by an abundance of green spaces provided by Putney Heath, Wimbledon Common and Richmond Park. Putney High Street is within easy reach and offers its excellent shopping facilities and an array of restaurants and bars.

EPC - D

Wandsworth Council Tax Band E

5 week security deposit required



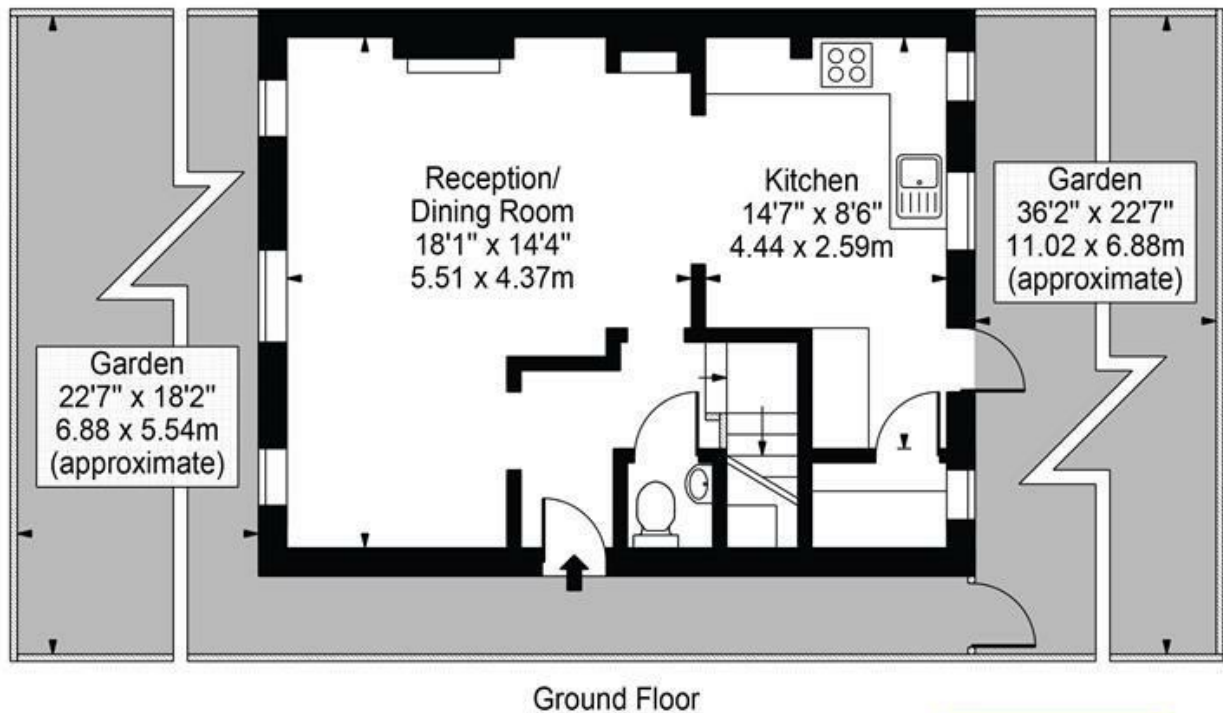
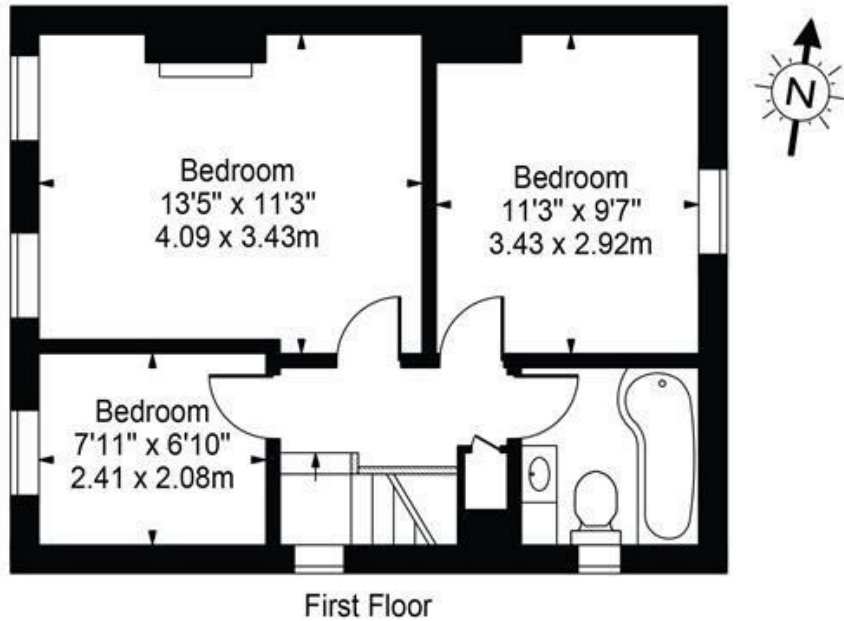
**£2,750 PCM**





# Dover House Road, SW15

Approx. Gross Internal Area 837 Sq Ft - 77.76 Sq M



ALLAN FULLER  
EST. 1981 ©

For Illustration Purposes Only - Not To Scale Floor Plan by Mira Nikolova Photography

This floor plan should be used as a general outline for guidance only and does not constitute in whole or in part an offer or contract. Any intending purchaser or lessee should satisfy themselves by inspection, searches, enquiries and full survey as to the correctness of each statement. Any areas, measurements or distances quoted are approximate and should not be used to value a property or be the basis of any sale or let.

With regards to any information supplied by us in relation to lease, ground rent and service charge it is essential that you have this information checked by your solicitor. We have transmitted information supplied to us by the vendor of the property but we have not been able to inspect the lease to check its accuracy. Please note that we have not tested any of the equipment or utilities at this property, nothing in these particulars shall be deemed a statement that the property is in good condition or otherwise nor that any of the services or facilities are in good working order. Measurements are approximate they were taken with a sonic tape, are as accurate as possible and usually measured from the widest point of any room. Description provided herein represents the opinion of the author, is given in good faith but should not be constructed as statements of fact. The particulars and photographs are for guidance only.