

**ALLAN FULLER**  
— EST. 1983 —

149 Upper Richmond Road, Putney, London, SW15 2TX

t: 020 8788 8822

e: putney@allanfuller.co.uk

www.allanfuller.co.uk

## Warwick Drive London, SW15

A particularly light and airy two bedroom penthouse with fantastic views and a wrap around terrace.. There is a large living/dining room with patio doors opening to the terrace a fully fitted kitchen and two double bedrooms.  
So if it is light and space that you are after, this could be the one for you!

Hawthorn Court is located close to Barnes Rail Station offering a quick link into London Waterloo. Putney Leisure Centre is also close by as are Barnes and Putney Commons for those who need access to green open spaces.  
EPC - C Council Tax Band D



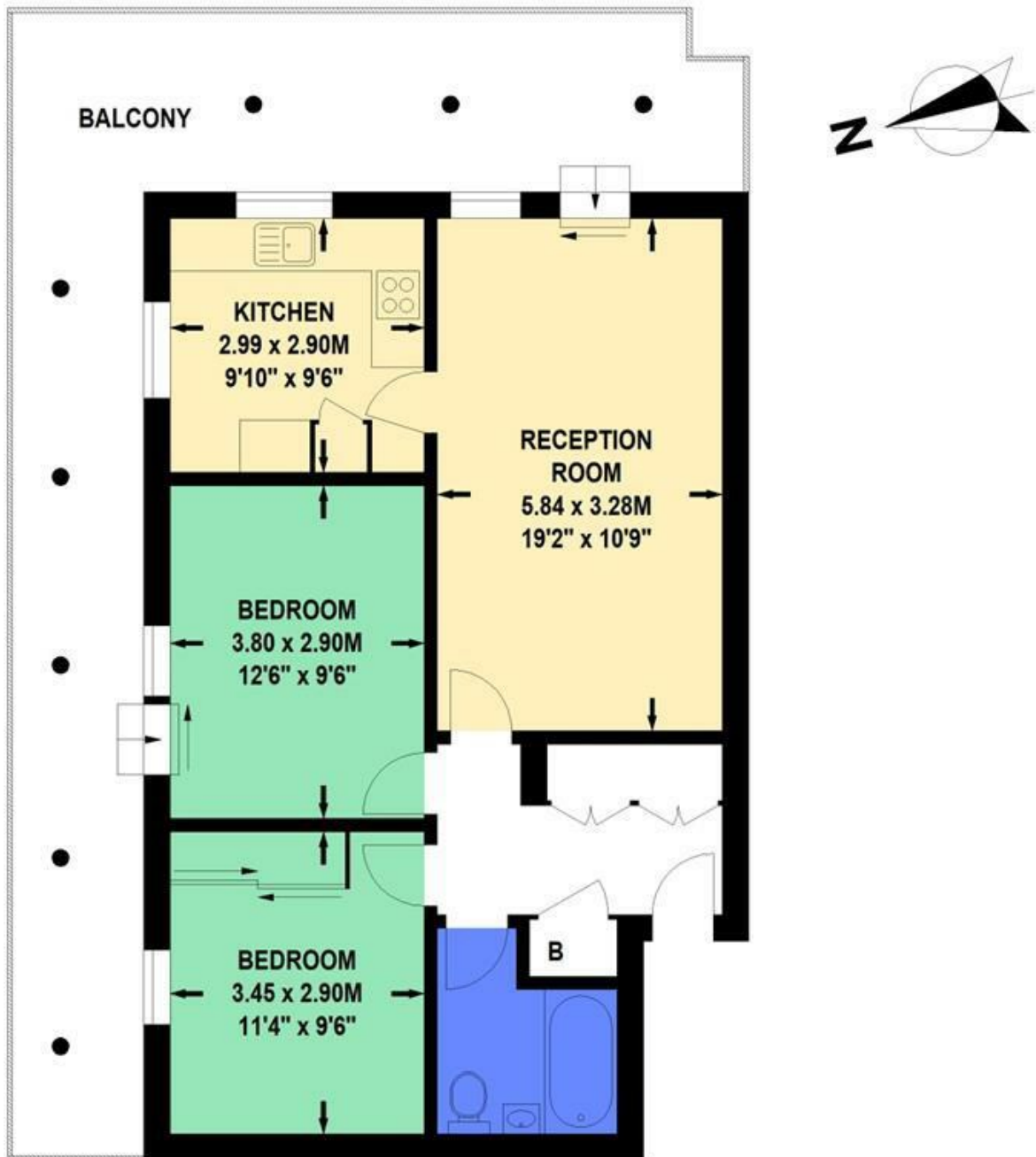
**Asking Price £600,000**  
**Leasehold - Share of Freehold**





# Hawthorn Court, Warwick Drive, SW15

Approximate Gross Internal Area 63 sq.m / 678 sq.ft



## Fourth Floor

Floor Plan produced for Allan Fuller by Mays Floorplans © . Tel 020 3397 4594

Illustration for identification purposes only, not to scale

All measurements are maximum, and include wardrobes and window bays where applicable

With regards to any information supplied by us in relation to lease, ground rent and service charge it is essential that you have this information checked by your solicitor. We have transmitted information supplied to us by the vendor of the property but we have not been able to inspect the lease to check its accuracy. Please note that we have not tested any of the equipment or utilities at this property, nothing in these particulars shall be deemed a statement that the property is in good condition or otherwise nor that any of the services or facilities are in good working order. Measurements are approximate they were taken with a sonic tape, are as accurate as possible and usually measured from the widest point of any room. Description provided herein represents the opinion of the author, is given in good faith but should not be constructed as statements of fact. The particulars and photograph are for guidance only.