

ALLAN FULLER
— EST. 1983 —

149 Upper Richmond Road, Putney, London, SW15 2TX

t: 020 8788 8822

e: putney@allanfuller.co.uk

www.allanfuller.co.uk

Putney Hill London, SW15

Spacious one bedroom apartment, set within this prominent and sought-after development on the edge of Putney Hill. This exceptional home comprises of a large reception room with a study area, a generous sized bedroom, contemporary bathroom, fully fitted kitchen with integrated appliances and ample storage throughout.

An added bonus is allocated parking included in the tenancy within the gated development.

The local area is renowned for its easy transport links to and from the city from Putney Station or East Putney Tube. Easy access to the A3 & also cycle routes.

Available March, offered furnished.

5 week security deposit required

Council tax band E

EPC rating E



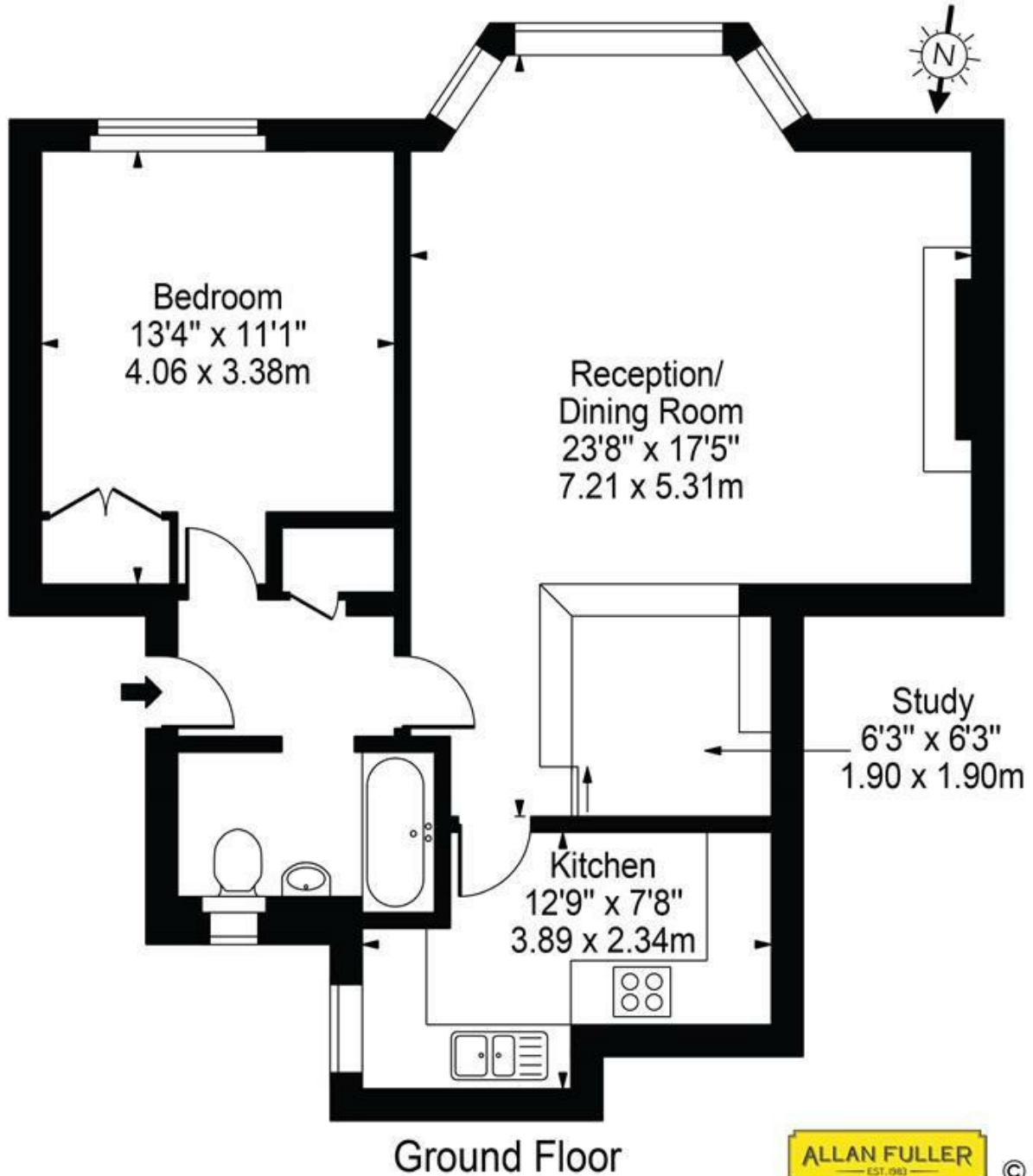
£1,900 Per Month





Ross Court, SW15

Approx. Gross Internal Area 664 Sq Ft - 61.69 Sq M



For Illustration Purposes Only - Not To Scale Floor Plan by Mira Nikolova Photography

This floor plan should be used as a general outline for guidance only and does not constitute in whole or in part an offer or contract. Any intending purchaser or lessee should satisfy themselves by inspection, searches, enquiries and full survey as to the correctness of each statement. Any areas, measurements or distances quoted are approximate and should not be used to value a property or be the basis of any sale or let.

With regards to any information supplied by us in relation to lease, ground rent and service charge it is essential that you have this information checked by your solicitor. We have transmitted information supplied to us by the vendor of the property but we have not been able to inspect the lease to check its accuracy. Please note that we have not tested any of the equipment or utilities at this property, nothing in these particulars shall be deemed a statement that the property is in good condition or otherwise nor that any of the services or facilities are in good working order. Measurements are approximate they were taken with a sonic tape, are as accurate as possible and usually measured from the widest point of any room. Description provided herein represents the opinion of the author, is given in good faith but should not be constructed as statements of fact. The particulars and photographs are for guidance only.