

ALLAN FULLER
— EST. 1983 —

149 Upper Richmond Road, Putney, London, SW15 2TX

t: 020 8788 8822

e: putney@allanfuller.co.uk

www.allanfuller.co.uk

Holford Way London, SW15

A stunning light and airy apartment, situated in this modern and highly sought after development, which forms part of Queen Mary's Place. This contemporary home comprises two double bedrooms, the principal with en-suite shower room, a family bathroom, spacious triple aspect open plan kitchen and living space and two private balconies to ensure you catch the sun throughout the day. The flat also enjoys its own parking space in a secure underground garage, and also has the added advantage of a resident's gym and manicured communal gardens

Holford Way is ideally located for access to the A3. The shops and transport facilities of Central Putney are a short journey away, along with numerous excellent bus services. You also have access to the green open spaces of Richmond Park, Putney Heath and Wimbledon Common.

EPC - D Council Tax E

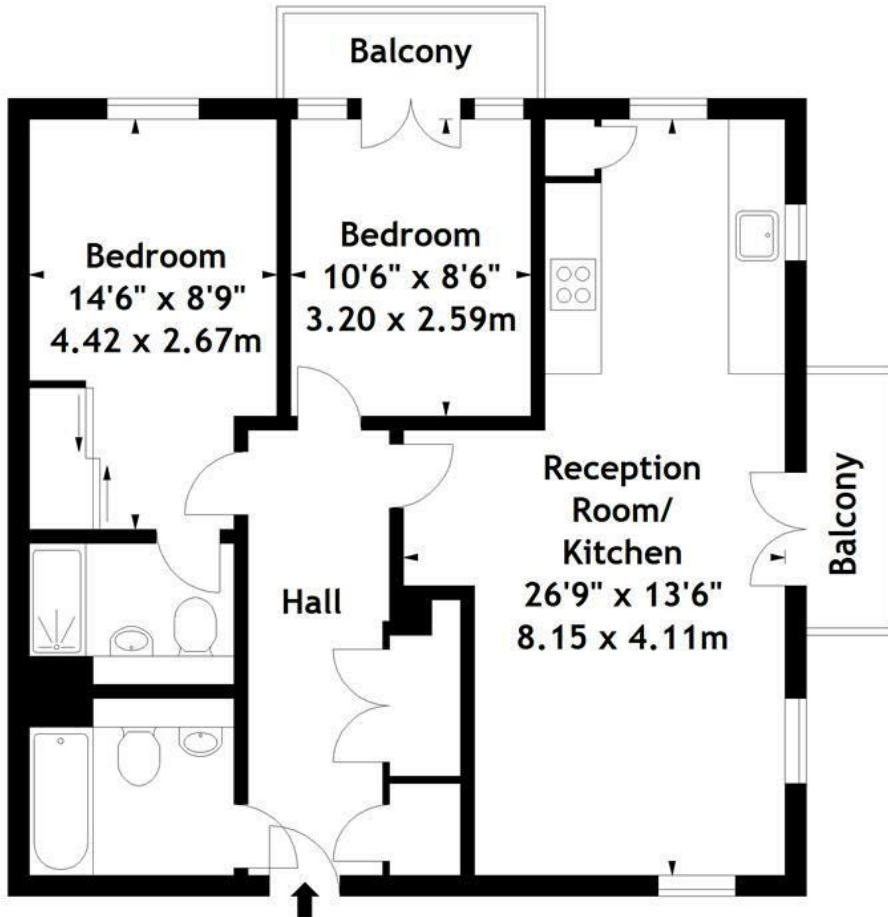


Asking Price £500,000
Leasehold





Holford Way,
Queen Mary's Place, SW15
Approx. Gross Internal Area
716 Sq Ft - 66.52 Sq M



Third Floor

Measured in accordance with RICS guidelines. Every attempt is made to ensure accuracy, however all measurements are approximate.

This floor plan is for illustrative purposes only and is not to scale.

© Datography Ltd 2015

Photographs * Floorplans * Virtual Tours

Tel: 0845 643 4401 www.datography.com

With regards to any information supplied by us in relation to lease, ground rent and service charge it is essential that you have this information checked by your solicitor. We have transmitted information supplied to us by the vendor of the property but we have not been able to inspect the lease to check its accuracy. Please note that we have not tested any of the equipment or utilities at this property, nothing in these particulars shall be deemed a statement that the property is in good condition or otherwise nor that any of the services or facilities are in good working order. Measurements are approximate they were taken with a sonic tape, are as accurate as possible and usually measured from the widest point of any room. Description provided herein represents the opinion of the author, is given in good faith but should not be constructed as statements of fact. The particulars and photograph are for guidance only.