

ALLAN FULLER
— EST. 1983 —

149 Upper Richmond Road, Putney, London, SW15 2TX

t: 020 8788 8822

e: putney@allanfuller.co.uk

www.allanfuller.co.uk

Manor Fields London, SW15

An elegant two double bedroom apartment set within this prestigious development with the benefit of large communal gardens, resident caretaker and 24 hour security.

The flat is extremely well presented with a spacious entrance hall, large reception room, modern kitchen and is double glazed throughout.

Located just off Putney Hill which allows easy access to most if not all of Putney's fashionable shops, bars and restaurants not forgetting terrific transport, Wimbledon Common and The River Thames. Off-street parking

Manor Fields was built in the 1930's and was one of the most prestigious flat developments anywhere in the capital. Since then it has if anything become even more desirable with the grounds being the third largest private gardens in the London and immaculately kept.
EPC - C Wandsworth Council Tax Band E



£600,000

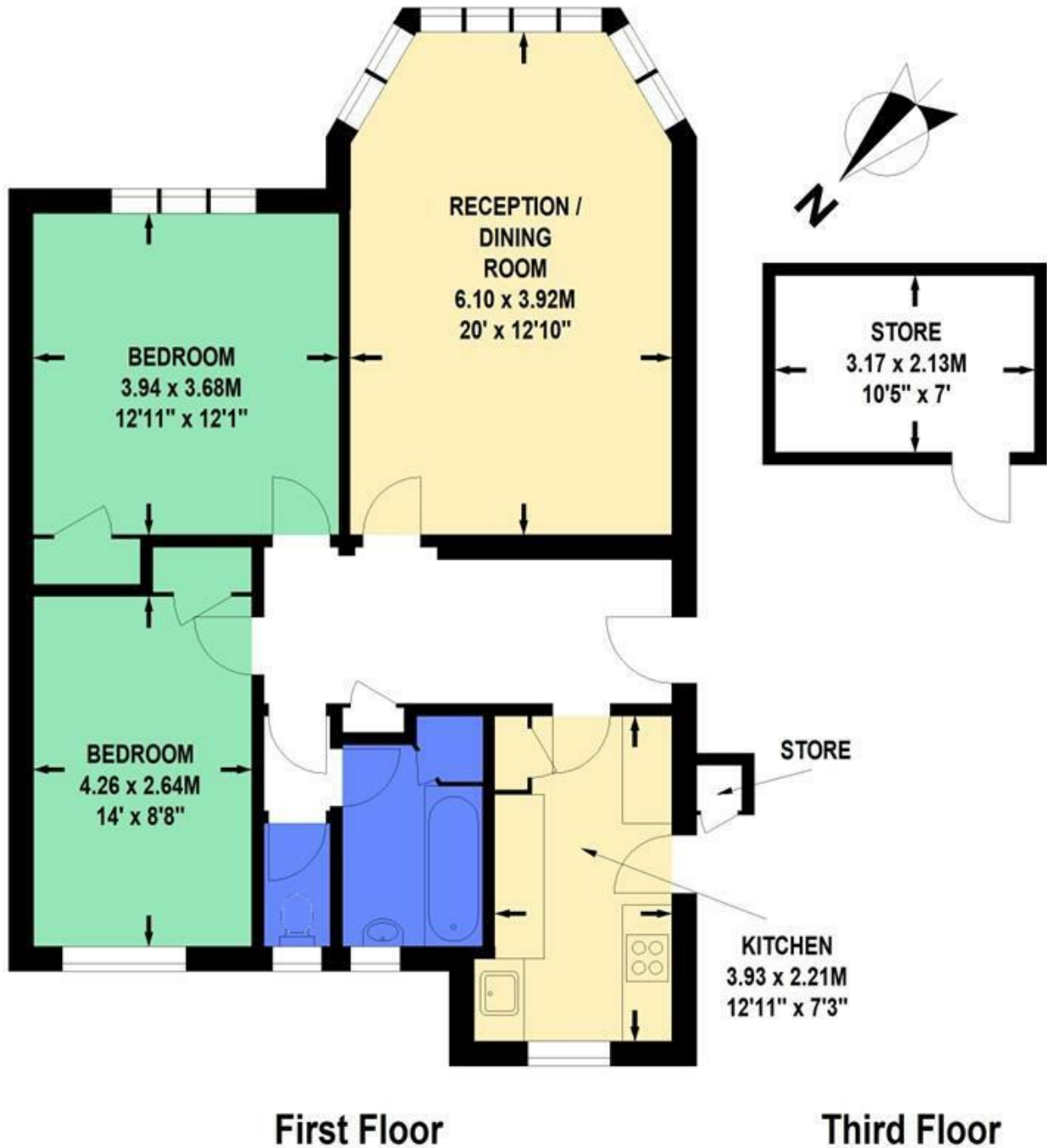
Leasehold - Share of Freehold





Armstrong House, Manor Fields, SW15

Approximate Gross Internal Area 79 sq.m / 850 sq.ft
Excluding External Stores of Approximately 7 sq.m / 75 sq.ft



Floor Plan produced for Allan Fuller by Mays Floorplans © . Tel 020 3397 4594

Illustration for identification purposes only, not to scale

All measurements are maximum, and include wardrobes and window bays where applicable

With regards to any information supplied by us in relation to lease, ground rent and service charge it is essential that you have this information checked by your solicitor. We have transmitted information supplied to us by the vendor of the property but we have not been able to inspect the lease to check its accuracy. Please note that we have not tested any of the equipment or utilities at this property, nothing in these particulars shall be deemed a statement that the property is in good condition or otherwise nor that any of the services or facilities are in good working order. Measurements are approximate they were taken with a sonic tape, are as accurate as possible and usually measured from the widest point of any room. Description provided herein represents the opinion of the author, is given in good faith but should not be constructed as statements of fact. The particulars and photograph are for guidance only.