

ALLAN FULLER
— EST. 1983 —

149 Upper Richmond Road, Putney, London, SW15 2TX

t: 020 8788 8822

e: putney@allanfuller.co.uk

www.allanfuller.co.uk

Roskell Road London, SW15

A great family home having been in the same family for 46 years! This delightful semi-detached Victorian property offers five bedrooms, three bathrooms and is superbly located on a pretty tree lined road in West Putney offering traditional charm and modern convenience. Re-wired and re-plumbed in 2000 the property would now benefit from some up-dating.

Roskell Road is located just off the Lower Richmond Road in the heart of West Putney with easy access to the shopping and transport facilities of the Lower Richmond Road and Central Putney. Putney Bridge Underground and Putney Mainline are found just a ten minute walk away. There are numerous local bus routes providing easy access into the City, West End. The River Thames Embankment is a short walk from this charming property.

EPC - D Wandsworth Council Tax Band G




Asking Price £1,500,000
Freehold

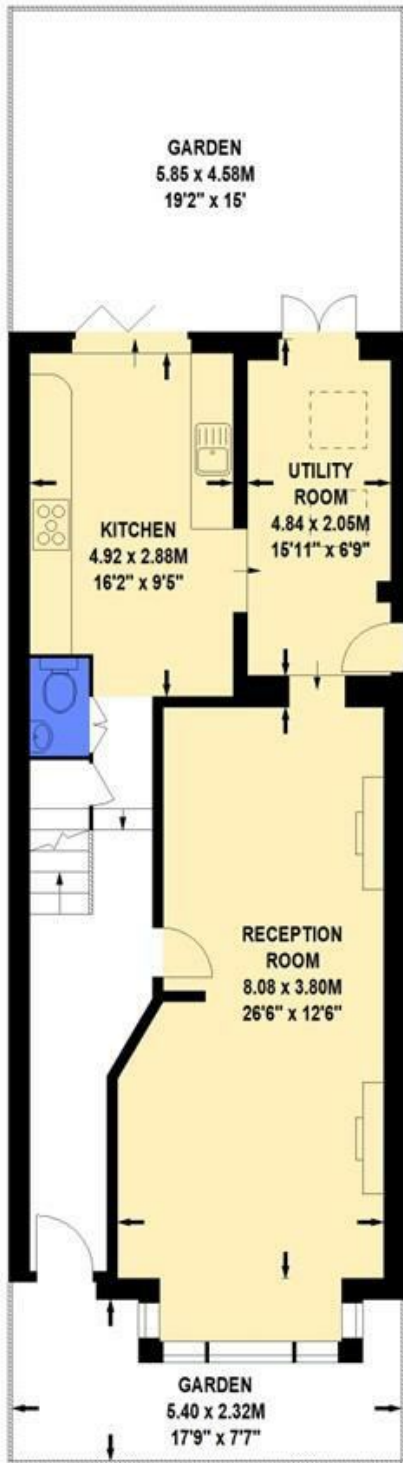




Roskell Road, SW15

Approximate Gross Internal Area 192 sq.m / 2067 sq.ft
Including Storage of Approximately 2 sq.m / 22 sq.ft

 Under 1.5m head height



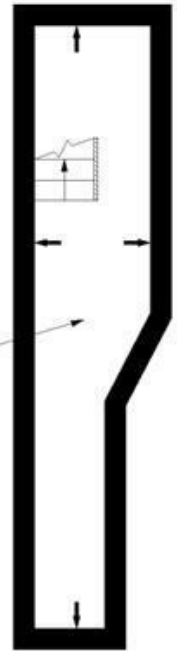
Ground Floor



First Floor



Second Floor



Cellar

Floor Plan produced for Allan Fuller by Mays Floorplans © . Tel 020 3397 4594

Illustration for identification purposes only, not to scale

All measurements are maximum, and include wardrobes and window bays where applicable

With regards to any information supplied by us in relation to lease, ground rent and service charge it is essential that you have this information checked by your solicitor. We have transmitted information supplied to us by the vendor of the property but we have not been able to inspect the lease to check its accuracy. Please note that we have not tested any of the equipment or utilities at this property, nothing in these particulars shall be deemed a statement that the property is in good condition or otherwise nor that any of the services or facilities are in good working order. Measurements are approximate they were taken with a sonic tape, are as accurate as possible and usually measured from the widest point of any room. Description provided herein represents the opinion of the author, is given in good faith but should not be constructed as statements of fact. The particulars and photograph are for guidance only.