

**ALLAN FULLER**  
— EST. 1983 —

149 Upper Richmond Road, Putney, London, SW15 2TX

t: 020 8788 8822

e: putney@allanfuller.co.uk

www.allanfuller.co.uk

## Galveston Road London, SW15

A delightful end of terrace period property in a prime East Putney location combining modern chic with the character of a bygone era. Arranged over three floors there is excellent entertaining space on the ground floor, three bedroom, a study and bathroom to the first floor with a fourth bedroom and bathroom on the top floor. In addition there is a charming rear garden.

Galveston Road is a desirable residential road with an excellent community spirit. It is quietly and conveniently located between Oakhill Road and West Hill. It is close to both East Putney Underground Station (District Line) and Putney Mainline Station (National Rail) Putney High Street and Southside Shopping Centre are close by and offer excellent multiple and specialist shopping facilities. Motorists are equally well served by the nearby A3. The property is also well situated for a number of outstanding schools, both private and state.

EPC - D Council Tax Band G



£1,500,000

Freehold











# Galveston Road, SW15

Approximate Gross Internal Area 192 sq.m / 2067 sq.ft



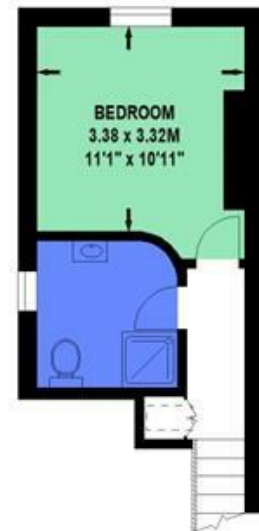
**Ground Floor**



**Basement**



**First Floor**



**Second Floor**

Floor Plan produced for Allan Fuller by Mays Floorplans © . Tel 020 3397 4594

Illustration for identification purposes only, not to scale

All measurements are maximum, and include wardrobes and window bays where applicable

With regards to any information supplied by us in relation to lease, ground rent and service charge it is essential that you have this information checked by your solicitor. We have transmitted information supplied to us by the vendor of the property but we have not been able to inspect the lease to check its accuracy. Please note that we have not tested any of the equipment or utilities at this property, nothing in these particulars shall be deemed a statement that the property is in good condition or otherwise nor that any of the services or facilities are in good working order. Measurements are approximate they were taken with a sonic tape, are as accurate as possible and usually measured from the widest point of any room. Description provided herein represents the opinion of the author, is given in good faith but should not be constructed as statements of fact. The particulars and photograph are for guidance only.