



# Balmer Hill

Gainford



**ADDISONS**

PROPERTY • RURAL • VALUATION



---

# ABOUT THE PROPERTY

We are pleased to offer to the market this spacious three bedroom link-detached house located on this popular residential cul de sac enjoying wonderful views to the rear.

The accommodation briefly comprises: Entrance Hallway, Living Room, Dining Room, Kitchen, Utility Room, Three Bedrooms, Bathroom and Separate WC. Externally there is a Driveway, Single Garage, Front and Rear Gardens.

Balmer Hill is a cul de sac situated just on the outskirts of this popular and picturesque village which has a lovely large village green and is located on a particularly pretty stretch of the River Tees. It lies between the popular market towns of Darlington and Barnard Castle and a short drive away from picturesque Teesdale.



13 Galgate Barnard Castle, County Durham, DL12 8EQ  
01833 638094  
[info@addisons-surveyors.co.uk](mailto:info@addisons-surveyors.co.uk)

**[ADDISONS-SURVEYORS.CO.UK](http://ADDISONS-SURVEYORS.CO.UK)**

---



# ACCOMMODATION

## GROUND FLOOR

### Hallway

Front entrance door with side light. Radiator and doors providing access to the living room, dining room and kitchen.

### Living Room

Window to the front elevation, radiator, coving to ceiling, feature fireplace with wood surround and inset real flame effect fire. radiator, coving to ceiling and decorative arches to alcoves.

### Dining Room

Window to the rear elevation, radiator and door accessing the rear utility.

### Utility

A good sized utility with plumbing for washing machine, worktop, strip lighting, space for appliances, window overlooking the rear garden and rear access door.

### Kitchen

Fitted with a range of wall and floor units, worktops and tiled splashbacks. Integrated gas oven and four ring hob with stainless steel chimney style extractor above. Stainless steel sink unit, space for under counter fridge, wall mounted gas central heating boiler, understairs cupboard, window to the rear elevation and side access door.

## FIRST FLOOR

### Landing

Window to the side elevation, loft hatch, airing cupboard and doors accessing the first floor accommodation.

### Bathroom

Panelled bath with mixer taps with shower head, pedestal hand wash basin, fully tiled wall, radiator and obscured glazed window to the rear elevation.

### Separate WC

Low level wc, radiator and obscured glazed window to the rear elevation





### Bedroom One

Double bedroom with window to the front elevation, radiator and central ceiling light.

### Bedroom Two

Double bedroom with window to the rear elevation enjoying wonderful views, radiator, central ceiling light and pedestal hand wash basin.

### Bedroom Three

Single bedroom with window to the front elevation, radiator and fitted cupboard.

### EXTERNALLY

To the front of the property there is an open plan lawned garden with planted borders and central pathway leading to the front door. Driveway leading to a single garage.

### Garage

Attached single garage with up and over garage door. The garage has light and power installed.

The rear garden can be accessed from a gate located at the front of the property as well as from the kitchen and utility rooms.

A private rear garden with wonderful views beyond being bounded by hedges and fencing. The garden is made up of several areas including lawned garden, paved patio, planted borders, vegetable plot, greenhouse and summerhouse.

### PRICE

£265,000

### COUNCIL TAX

Band C

### SERVICES

Mains electricity, mains gas, mains water and sewerage. Gas fired central heating.

### TENURE

Freehold

### VIEWING

Strictly by appointment through the selling agents Addisons Chartered Surveyors  
Tel: 01833 638094 opt 1.

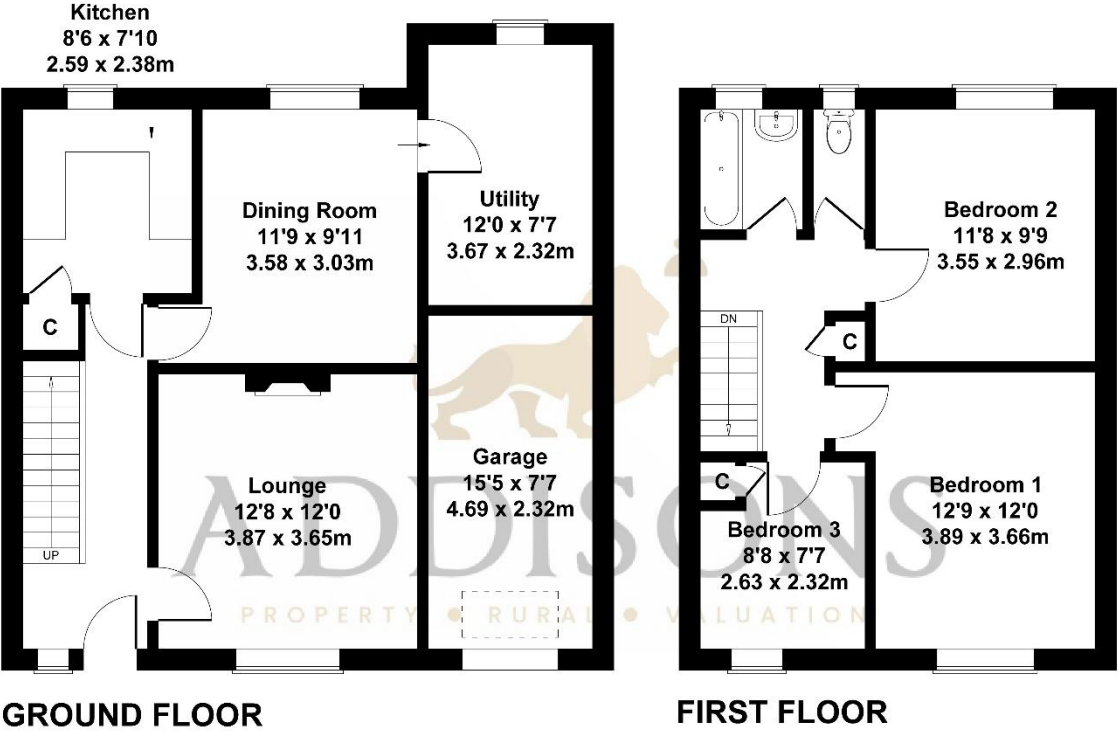
### BROCHURE

Details and photographs taken June 2025



# Floor Plan

## 9 Balmer Hill, Gainford



SKETCH PLAN FOR ILLUSTRATIVE PURPOSES ONLY

All measurements walls, doors, windows, fittings and appliances, their sizes and locations, are approximate only. They cannot be regarded as being a representation by the seller, nor their agent.

Produced by Potterplans Ltd. 2025

Score	Energy rating	Current	Potential
92+	A		
81-91	B		81 B
69-80	C		
55-68	D	67 D	
39-54	E		
21-38	F		
1-20	G		



Addisons Chartered Surveyors gives notice that: These particulars are set out as a general outline only for the guidance of intending purchasers or lessees, and do not constitute any part of an offer or contract. Details are given without any responsibility, and any intending purchasers, lessees or third parties should not rely on them as statements or representations of fact, but must satisfy themselves by inspection or otherwise as to the correctness of each of them. No person in the employment of Addisons Chartered Surveyors has any authority to make any representation or warranty whatever in relation to the property. Purchase prices, rents or other prices quoted are correct at the date of publication and, unless otherwise stated, exclusive of VAT. Intending purchasers and lessees must satisfy themselves independently as to the incidence of VAT in respect of any transaction relating to this property.

T: 01833 638094

ADDISONS-SURVEYORS.CO.UK