



The Barn, Burnthorne Lane, Dunley, Worcestershire

G HERBERT
BANKS

EST. 1898

The Barn
Burnthorne Lane
Dunley, Worcestershire
DY13 OTP

Stunning fully renovated period barn in a magical setting.

Truly incredible distant views.

Reception hall, sitting room/snug, magnificent living/dining kitchen, utility room, shower room.

Gallery landing, 3 double bedrooms, en-suite shower room, superb family bathroom.

- The Barn = 1,800 sq.ft
- Garage = 292 sq.ft
- Outbuilding = 966 sq.ft

Double Garage, first class stabling, hay store, expansive gravel drive, attractive lawned gardens and grounds.

Set in around 3.5 acres

Situation

An utterly glorious elevated position creating a real wow factor. The Barn enjoys remarkable views over the surrounding valley and towards The Malvern Hills, Bredon Hill and the beginning of the Cotswold Escarpment.

It lies just outside the popular and very accessible village of Dunley. Dunley has a public house and petrol station/store. The property also lies within the highly regarded Chantry catchment.

The surrounding villages of Astley, Abberley and Great Witley provide a range of amenities including post offices / general stores, junior schools, churches and a doctors surgery in Great Witley

Description

This very special detached barn conversion has been beautifully modernised and reconfigured by the present owners over the last 4 years. Considerable thought has been given to the wonderful interior with many outstanding features including flag stone floors to the ground floor and period style radiators. The house has been completely rewired and replumbed and benefits from a refitted kitchen and sanitary ware. The house has the most attractive painted double glazed windows.

It is an incredibly appealing country house package for those buyers looking for an equestrian/small holding package.

The house has a central reception hall with flagstone floor and staircase rising to the first floor. There is a cosy sitting room/snug off.

Walk into the stunning open plan living/dining kitchen, a very striking room with astonishing views. This room functions as 3 elements with the extremely well appointed kitchen, providing a range of cabinets, large island unit with breakfast bar, Belfast sink unit and wine rack. Appliances include a 7 ring Smeg range cooker (LPG & electric) integral fridge freezer and Bosch dishwasher.

Living and dining areas with delightful exposed timber frames, 2 sets of bi-fold doors, underfloor heating and unforgettable views.

Lying to the rear of the house is an excellent long utility room which is very well appointed with a range of cabinets, sink unit and stable door to the rear. Adjoining is a quality shower room.

The first floor provides a central gallery landing with feature arched window. This leads to 3 double bedrooms, the master room with en-suite. In addition, there is the impressive family bathroom with slipper bath.

Outside

Double garage adjoining the property with 2 sets of timber double doors, further pedestrian doors, Worcester Bosch boiler, power and lighting.

The Approach, Gardens and Grounds

The Barn is approached double timber field gates and a sweeping gravel driveway. The driveway leads to the fabulous timber clad/block built stable with central concrete path. It provides 5 boxes including a mare and foal box, feed store, tack room and rear hay store.

Expansive lawned gardens and grounds with colourful well stocked bed to the front and stone walling. Principal large fenced paddock with long lane frontage and automatic water drinking trough.

Small enclosed paddock to the left hand side of the drive.

GENERAL INFORMATION

Services

Mains water and electricity. Private drainage. Oil fired central heating.

Local Authority

Malvern Hills District Council Tel: 01684 862151

EPC Rating

A full copy of the EPC can be requested from the selling agents or by visiting:

www.gov.uk/find-energy-certificate.

The EPC was carried out in May 2022 with a rating 54/E; potential 79/C.

Fixtures and Fittings

Any items of this nature not specifically mentioned within the confines of these sales particulars are to be excluded from the sale.

Viewing by Appointment Only

Via the Agent's Great Witley Office Tel: 01299 896968

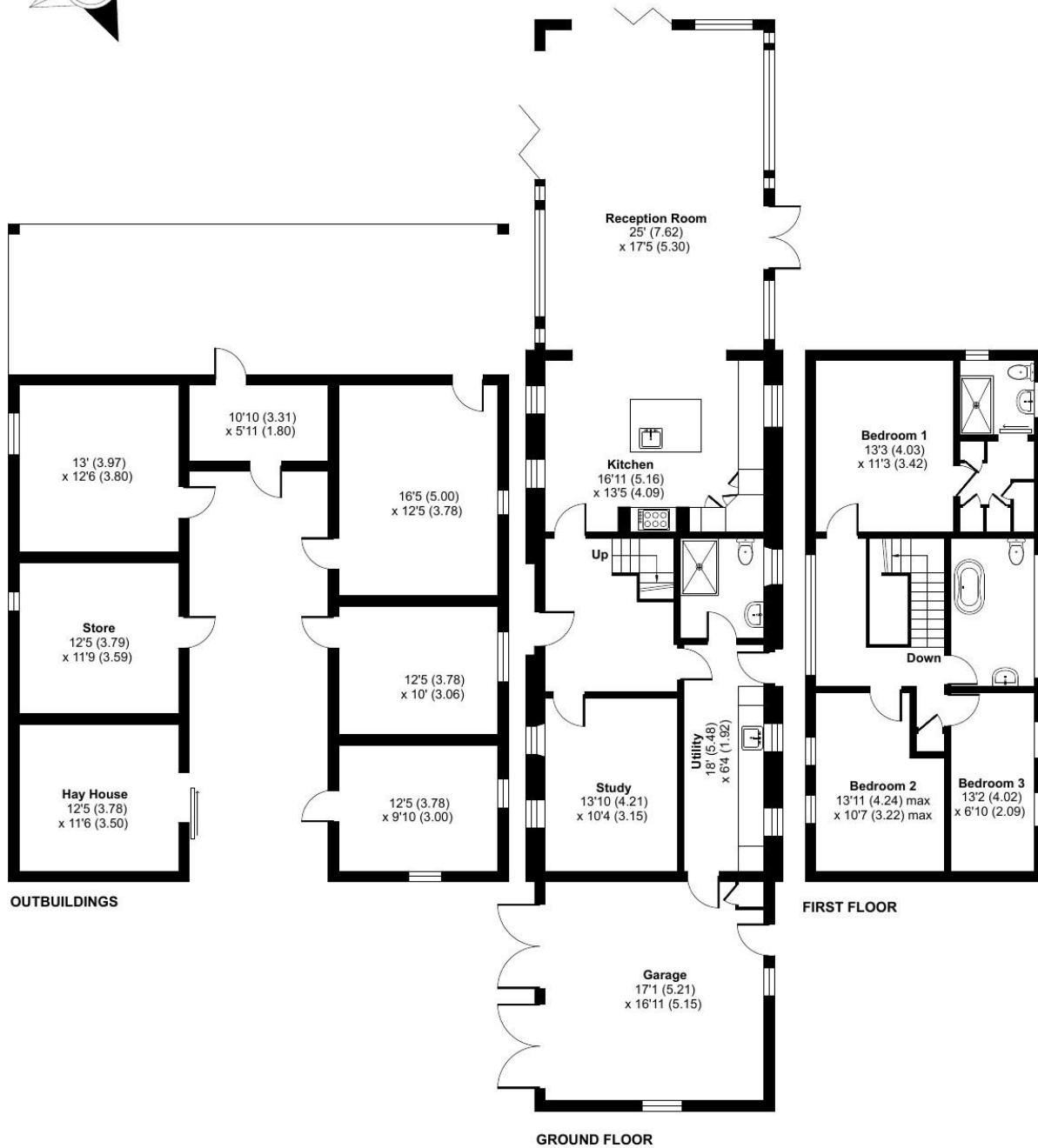
What 3 Words

///bonds.presumes.midwinter



Approximate Area = 1800 sq ft / 167.2 sq m
 Garage = 292 sq ft / 27.1 sq m
 Outbuildings = 966 sq ft / 89.7 sq m
 Total = 3058 sq ft / 284 sq m

For identification only - Not to scale





G HERBERT BANKS

EST. 1898

01299 896 968
info@gherbertbanks.co.uk
www.gherbertbanks.co.uk

The Estate Office, Hill House
 Great Witley, Worcestershire WR6 6JB



AGENTS NOTE The Agents would stress that these particulars have been written as a guide to the prospective purchaser and that measurements are approximate. If a prospective purchaser requires clarification on any point mentioned within these particulars they are asked to contact the Agents. The property is sold with all faults and defects, whether of condition or otherwise and neither the Vendor nor the Agents of the Vendor, are responsible for any such faults or defects or for any statements contained in the general remarks, summaries or particulars of sale of the property prepared by the said Agents. The purchaser shall be deemed to acknowledge that he has not entered into this contract in reliance of any of the said statements, that he has satisfied himself as to the correctness of each of the statements by inspection or otherwise and that no warranty or representation has been made by the Vendor or the said Agents in relation to, or in conjunction with, the property. The plan and quantities are based on the last Ordnance Survey sheets as revised by the Agents. Where fields or enclosures have been divided, the areas have been estimated by the Agents and the quantities are believed to be correct and shall be so accepted by the purchasers. G Herbert Banks LLP is a limited liability partnership registered in England and Wales with registered No. OC344076. G Herbert Banks LLP is a member of The Property Ombudsman.

